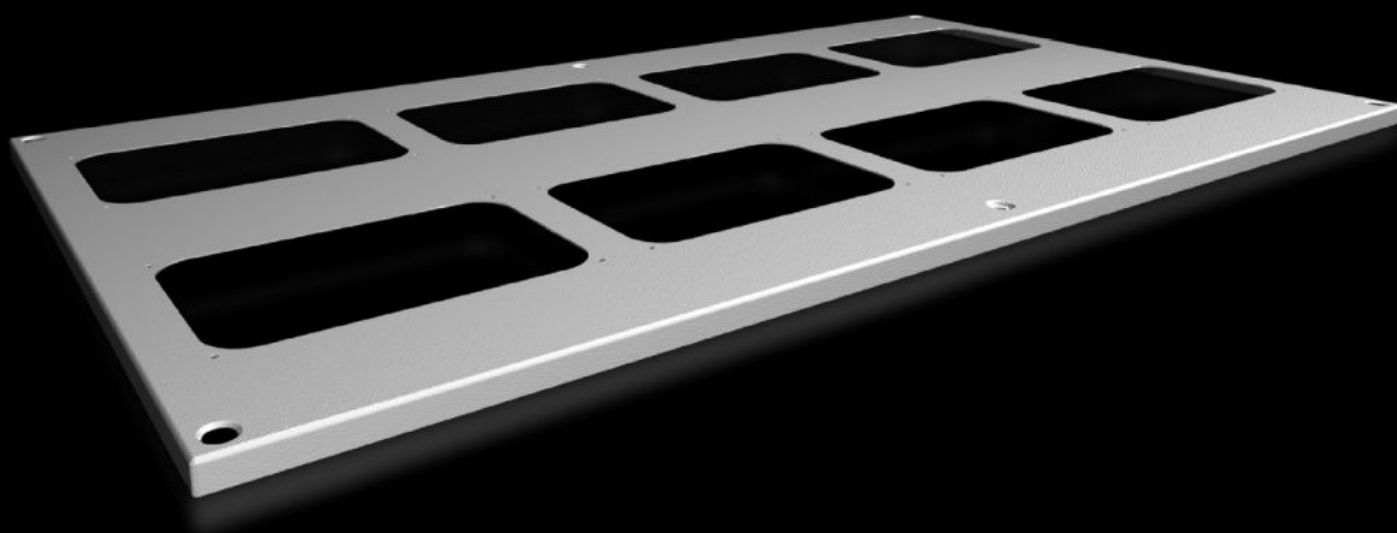


Rittal – The System.

Faster – better – everywhere.



SV 9681.516

Roof plates for cable entry glands

State: 2025-07-31 (Source: [rittal.com/ca-en](https://www.rittal.com/ca-en))

ENCLOSURES

POWER DISTRIBUTION

CLIMATE CONTROL

IT INFRASTRUCTURE

SOFTWARE & SERVICES

FRIEDHELM LOH GROUP



SV 9681.516 - Roof plates for cable entry glands for VX, VX IT

For enclosures without roof plate and to replace the standard roof on other enclosures.

Features

Model No.	SV 9681.516
Product description	For enclosures without roof plate and to replace the standard roof.
Material	Carbon steel, 1.5 mm
Surface finish	Textured paint
Color	RAL 7035
Supply includes	Assembly components
Number of required cable entry glands	8
Suitable for	Width: = 1,100 mm Depth: = 600 mm
Packaging unit	1 pc(s).
Net weight	6.3
Gross weight	6.7
PCF/VE (cradle-to-gate)	25.5 kg CO2 eq (Cat B)
Information regarding the PCF class	Category B: PCF value (cradle-to-gate) calculated approximately on the basis of the product weight and self-declared
Customs tariff number	73269098
EAN	4028177926578
ETIM 9	EC000744
ECLASS 8.0	27182405

Approvals

Explanations

Declaration of conformity

Declaration of conformity UK