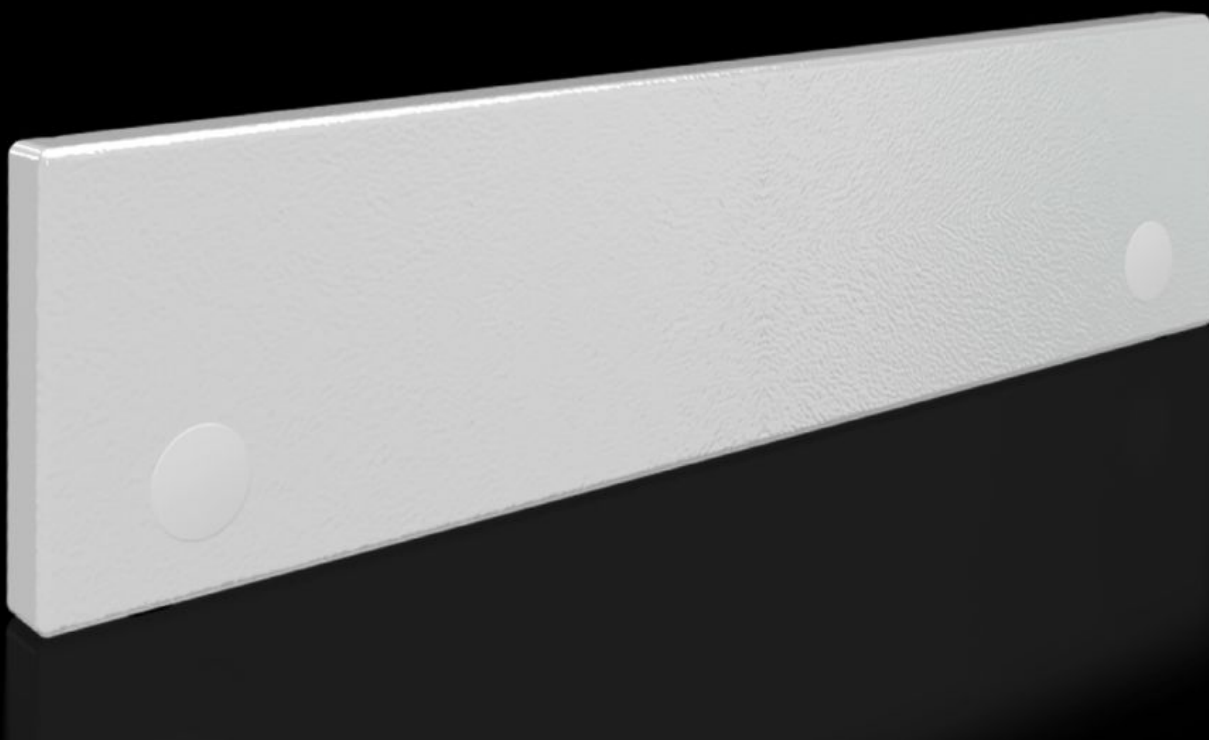


Rittal – The System.

Faster – better – everywhere.



SV 9682.314

Front trim panel, top, closed

State: 2026-02-07 (Source: [rittal.com/ca-en](https://www.rittal.com/ca-en))

ENCLOSURES

POWER DISTRIBUTION

CLIMATE CONTROL

IT INFRASTRUCTURE

SOFTWARE & SERVICES

FRIEDHELM LOH GROUP



SV 9682.314 - Front trim panel, top, closed for VX

Top closure panel when partial doors are used.



Features

| | |
|-------------------------------------|---|
| Model No. | SV 9682.314 |
| Version | Solid |
| Product description | To finish off the modular front design at the top when using partial doors. The front trim panels may be removed from the outside by unscrewing. The cross member required for mounting is included with the supply of the mounted partial doors. |
| Material | Carbon steel, 1.5 mm |
| Surface finish | Textured paint |
| Color | RAL 7035 |
| Supply includes | Assembly components |
| Dimensions | Height: 100 mm |
| Suitable for | Width: = 400 mm |
| Packaging unit | 1 pc(s). |
| Net weight | 1 |
| Gross weight | 1.02 |
| PCF/VE (cradle-to-gate) | 3.8 kg CO2 eq (Cat B) |
| Information regarding the PCF class | Category B: PCF value (cradle-to-gate) calculated approximately on the basis of the product weight and self-declared |
| Customs tariff number | 83024200 |

Features

| | |
|------------|---------------|
| EAN | 4028177929630 |
| ETIM 9 | EC000456 |
| ECLASS 8.0 | 27142423 |

Approvals

| | |
|--------------|--|
| Approvals | UL + C-UL (listed) UL + C-UL - FTТА |
| Explanations | Declaration of conformity UK |