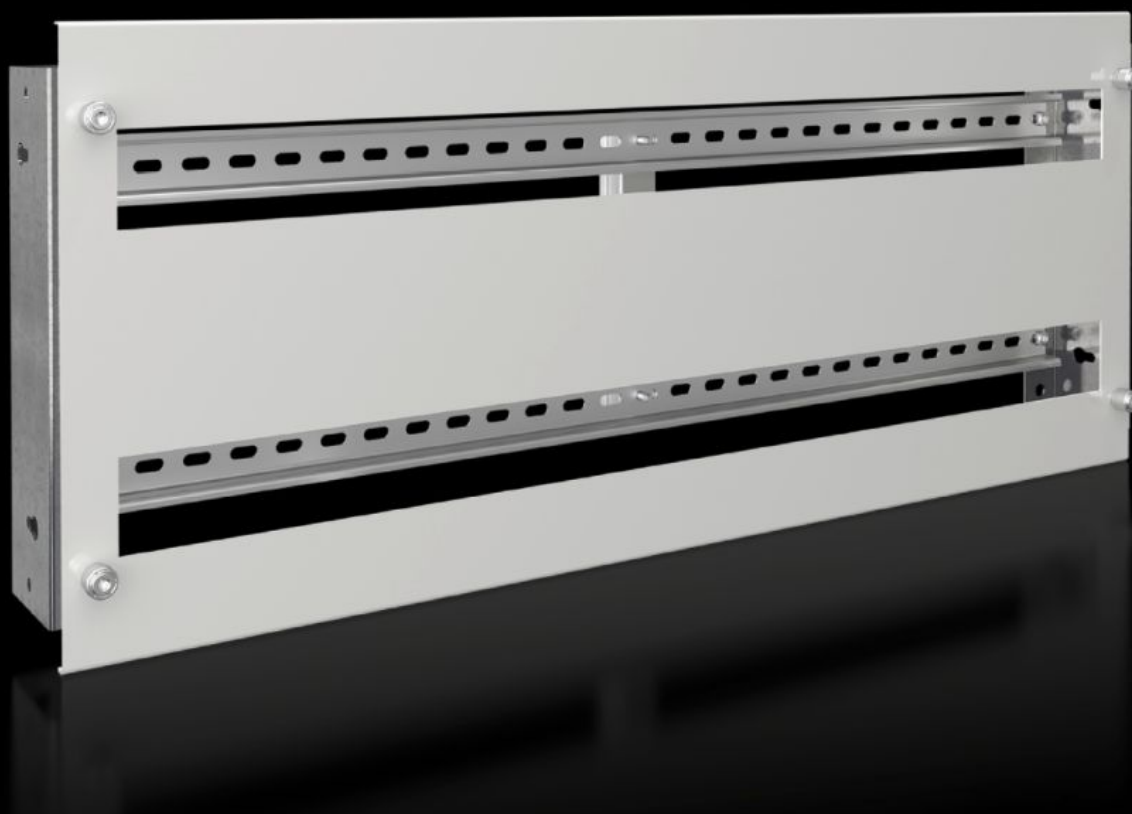


# Rittal – The System.

Faster – better – everywhere.



## SV 9683.783 Support Frame

State: 2025-05-10 (Source: [rittal.com/ca-en](https://www.rittal.com/ca-en))

ENCLOSURES

POWER DISTRIBUTION

CLIMATE CONTROL

IT INFRASTRUCTURE

SOFTWARE & SERVICES

FRIEDHELM LOH GROUP



# SV 9683.783 - Support Frame for DIN rail-mounted devices

Support frame kit suitable for DIN rail-mounted devices (e.g. MCBs).

## Features

Model No.	SV 9683.783
Product description	Support frame kit suitable for DIN rail-mounted devices (e.g. MCBs). The support rails are fastened with two mounting brackets to the compartment side wall. The cover is fastened to the support frame with knurled screws. In combination with functional area dividers, partial mounting plates and side panel modules, internal compartmentalization in accordance with Form 2, 3, or 4 is possible.
Material	Support frame: Carbon steel, zinc-plated, 1.5 mm Cover: Carbon steel, spray finished, 1.5 mm
Supply includes	Support Rails 2 mounting bracket 1 cover with cut-out Assembly components
For compartment height	300 mm
Suitable for	Width: = 800 mm
No. of pitch units 17.5 mm	2 x 36
Packaging unit	1 pc(s).
Net weight	4
Gross weight	4.3
PCF per pack (cradle-to-gate)	16.4 kg CO2 eq (Cat B)
Note on PCF category	Category B: PCF value (cradle-to-gate) based on the product weight, approximately calculated and self-declared
Customs tariff number	39269097
EAN	4028177937338

# Features

ETIM 9	EC001900
ECLASS 8.0	27400613

# Approvals

Explanations	Declaration of conformity Declaration of conformity UK
--------------	---