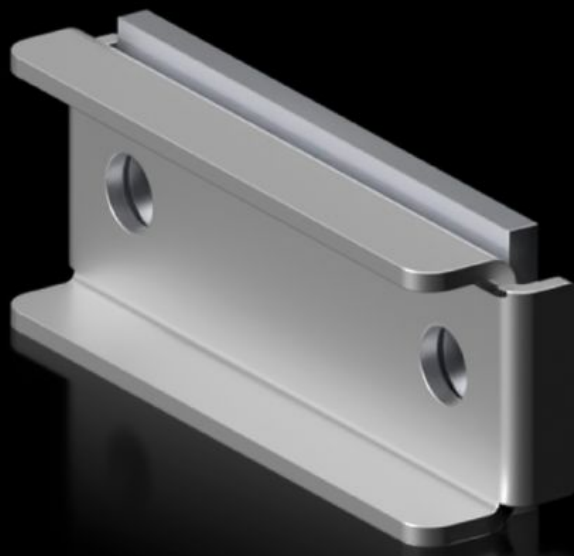


Rittal – The System.

Faster – better – everywhere.



SV 9686.730 Clamping plate

State: 2025-12-14 (Source: rittal.com/ca-en)

ENCLOSURES

POWER DISTRIBUTION

CLIMATE CONTROL

IT INFRASTRUCTURE

SOFTWARE & SERVICES

FRIEDHELM LOH GROUP



SV 9686.730 - Clamping plate for Flat-PLS

Used for attaching laminated copper bars to a main or distribution busbar system made of flat copper.

Features

Model No.	SV 9686.730
Material	Terminal plate: Stainless steel Connection intermediate piece: E-Cu, silver-plated
Note	Additionally, the connection plate 9686.750 is required for connection to the busbar system When using two stacked laminated copper bars, the use of the clamping plate is required Screws are not included with the supply
Clamping area for laminated copper bars (W x H)	63 x 20 mm
Packaging unit	1 pc(s).
Net weight	0.342
Gross weight	0.358
Customs tariff number	74071000
EAN	4028177981386
ETIM 9	EC002270
ETIM 8	EC002270
ECLASS 8.0	27409221