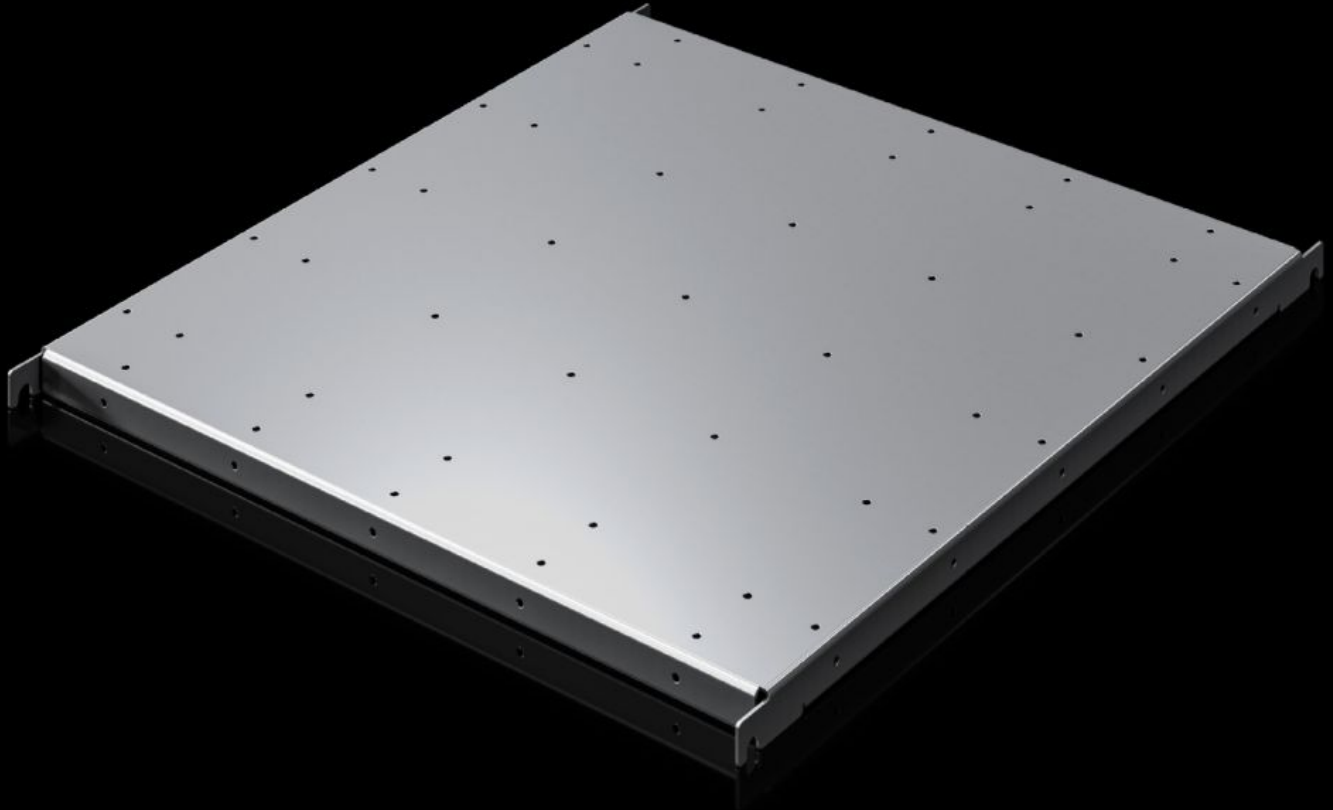


Rittal – The System.

Faster – better – everywhere.



SV 9692.021

Component Shelf, Heavy Duty

State: 2026-05-01 (Source: [rittal.com/ca-en](https://www.rittal.com/ca-en))

ENCLOSURES

POWER DISTRIBUTION

CLIMATE CONTROL

IT INFRASTRUCTURE

SOFTWARE & SERVICES

FRIEDHELM LOH GROUP



SV 9692.021 - Component Shelf, Heavy Duty VX ESS

For accommodating e.g. block batteries.

Features

Model No.	SV 9692.021
Material	Carbon steel, zinc-plated
Supply includes	Assembly components
Load capacity static	200 kg 2,000 N
Support area	Width: 509 mm Depth: 714 mm
Suitable for	Width: 600 mm Depth: 800 mm
Packaging unit	1 pc(s).
Net weight	9.1 kg
Gross weight	9.34 kg
PCF/VE (cradle-to-gate)	24.08 kg CO2 eq (Cat B)
Information regarding the PCF class	Category B: PCF value (cradle-to-gate) calculated approximately on the basis of the product weight and self-declared
Customs tariff number	94039910
Product description	VX ESS component shelf, heavy duty, WD: 600x800 mm