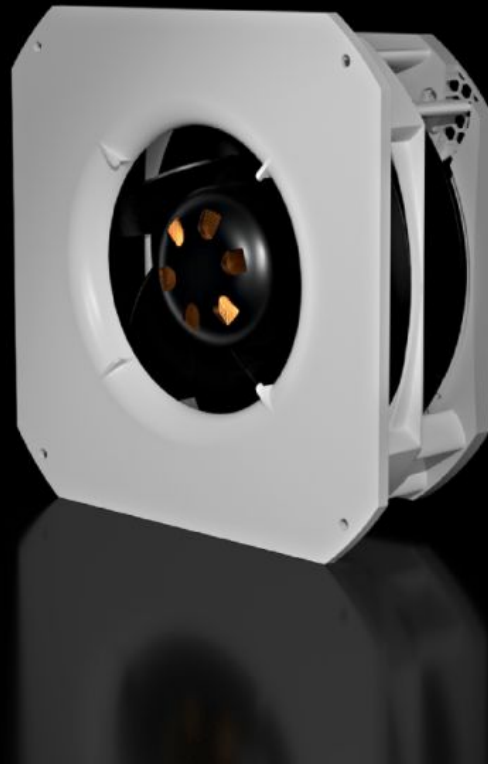


Rittal – The System.

Faster – better – everywhere.



SK 3398.425

轴流风扇

状态: 2026-7-3 (来源: rittal.com/cn-zh)

ENCLOSURES

POWER DISTRIBUTION

CLIMATE CONTROL

IT INFRASTRUCTURE

SOFTWARE & SERVICES

FRIEDHELM LOH GROUP



SK 3398.425 - 轴流风扇

特征

型号	SK 3398.425
直径	265 mm
额定工作电压	230 V, 50/60 Hz
包装单元	1 件
净重	2.22 kg
毛重	2.62 kg
税率号	84145935
ETIM 9	EC000855
ETIM 8	EC000855
ECLASS 8.0	27189269