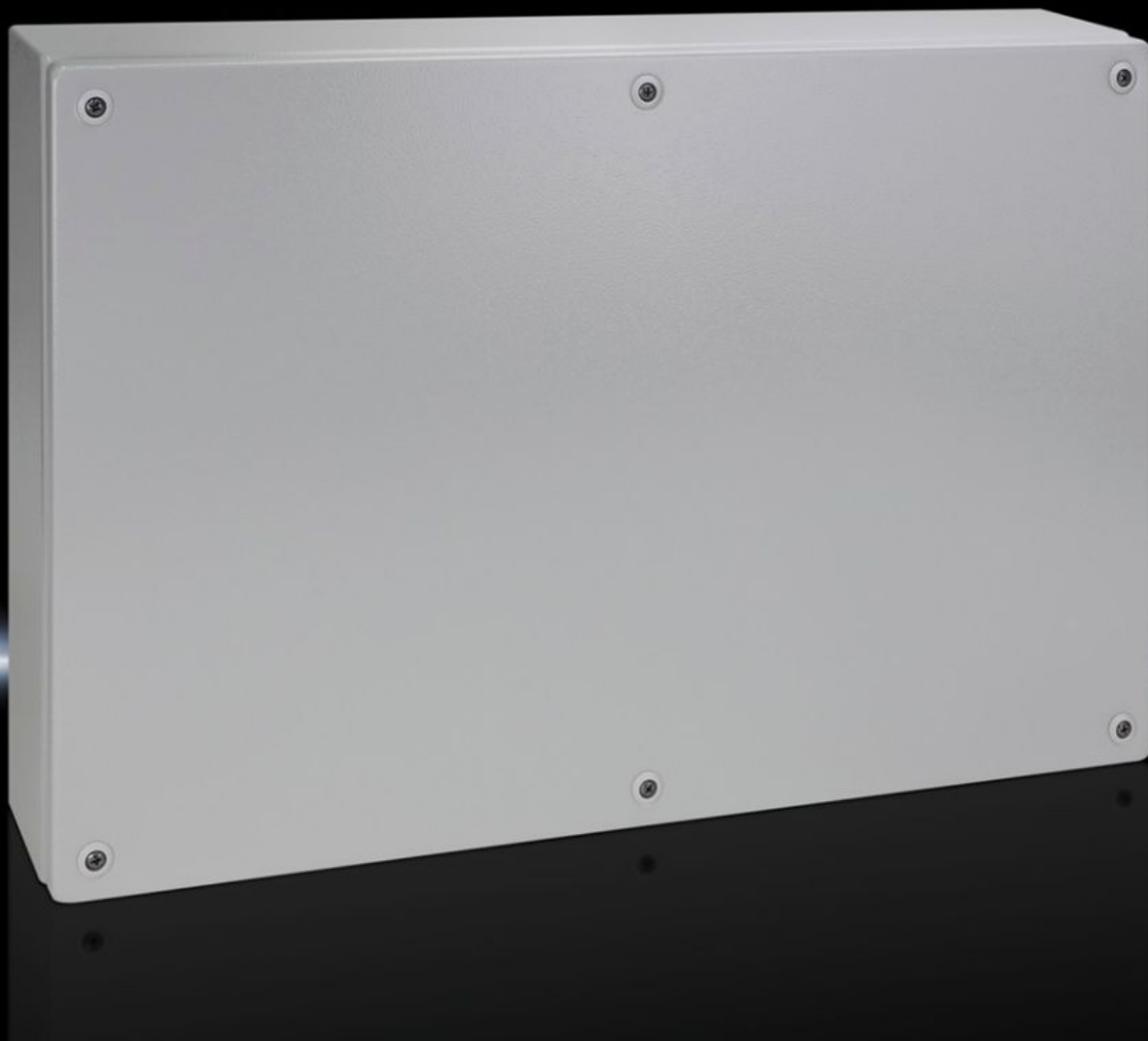
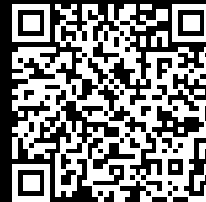


# Rittal – The System.

Faster – better – everywhere.



## KL 1512.510

### Terminal boxes KL

State: 22/08/2025 (Source: [rittal.com/com-en](http://rittal.com/com-en))

ENCLOSURES

POWER DISTRIBUTION

CLIMATE CONTROL

IT INFRASTRUCTURE

SOFTWARE & SERVICES

FRIEDHELM LOH GROUP



# KL 1512.510 - Terminal boxes KL without gland plate

Spray-finished enclosure with sheet steel cover, without gland plate Protection category IP 66.



## Features

Model No.	KL 1512.510
Material	Enclosure: Sheet steel Cover: Sheet steel, all-round foamed-in PU seal
Surface finish	Enclosure and cover: Dipcoat primed, powder-coated on the outside, textured paint
Colour	RAL 7035
Supply includes	Enclosure with cover Quick-release fastener including plastic bushes
Protection category NEMA	NEMA 4
Protection category to IEC 60 529	IP 66
IK Code	IK08
Dimensions	Width: 600 mm Height: 400 mm Depth: 120 mm
Material thickness - cover	1.25 mm
Material thickness - enclosure	1.38 mm
Basic material	Sheet steel
Packs of	1 pc(s).
Net weight	7.931

# Features

Gross weight	8.6
Customs tariff number	73269098
EAN	4028177251243
E-Number Sweden	E3404674
ECLASS 8.0	27180101

# Approvals

Approvals	Bureau Veritas DNV-GL Lloyds Register of Shipping UL + C-UL (listed)
Explanations	Manufacturer's declaration Declaration of conformity UK

# Tender text

Terminal box without gland plate (120 mm deep), protection cat. IP 66

## Enclosure:

sturdy sheet steel construction, folded and welded from a single piece, with all-round protection channel on the cover aperture, rear panel with recessed holes for wall mounting brackets, cover of sheet steel, sealed, with a highly elastic, foamed-in special seal, facilities for connecting PE conductors in the cover and box, profile strips on both internal sides with mounting holes. Special plastic bush guards against accidental loss of the cover screws and provides screwdriver guidance.

## Accessories:

quick-release fastener, cover retainer, plastic cable gland plate, cover hinges, mounting plate

## Surface finish:

steel is cleaned, degreased, phosphated, electrophoretic dipcoat primed and electrostatically polyester powder-coated in textured RAL 7035

Dimensions (W x H x D): 600 x 400 x 120 mm