

Rittal – The System.

Faster – better – everywhere.



KX 1589.000

Terminal box KX, sheet steel, without gland plate

State: 19/04/2026 (Source: rittal.com/com-en)

ENCLOSURES

POWER DISTRIBUTION

CLIMATE CONTROL

IT INFRASTRUCTURE

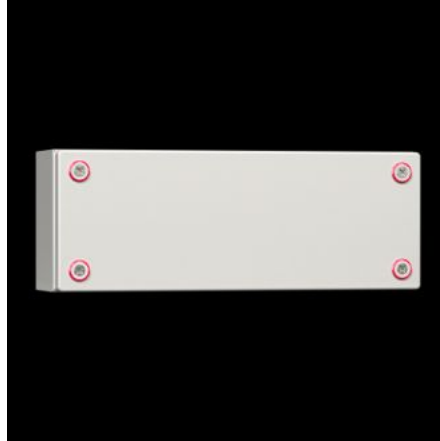
SOFTWARE & SERVICES

FRIEDHELM LOH GROUP



KX 1589.000 - Terminal box KX, sheet steel, without gland plate

The small enclosure KX, terminal box KX, without a gland plate allows for flexible interior installation while maintaining a high protection category.



Features

| | |
|-----------------------------------|--|
| Model No. | KX 1589.000 |
| Product description | The small enclosure KX, terminal box KX, without a gland plate allows for flexible interior installation while maintaining a high protection category. |
| Material | Enclosure: Sheet steel Cover: Sheet steel, all-round foamed-in PU seal |
| Surface finish | Enclosure and cover: Dipcoat primed, powder-coated on the outside, textured paint |
| Colour | RAL 7035 |
| Supply includes | Enclosure with cover Mini cam lock |
| Protection category NEMA | NEMA 1 NEMA 3R NEMA 4 NEMA 12 |
| Protection category to IEC 60 529 | IP 66 |

Features

| | |
|--------------------------------|--|
| Type rating to UL 50E | Type 1 Type 3R Type 4 Type 12 |
| IK Code | IK08 |
| Dimensions | Width: 400 mm Height: 150 mm Depth: 120 mm |
| Material thickness - cover | 1.25 mm |
| Material thickness - enclosure | 1.25 mm |
| Basic material | Sheet steel |
| Packs of | 1 pc(s). |
| Net weight | 2.7 kg |
| Gross weight | 2.924 kg |
| PCF per pack (cradle-to-gate) | 14.3 kg CO2 eq (Cat B) |
| Note on PCF category | Category B: PCF value (cradle-to-gate) based on the product weight, approximately calculated and self-declared |
| Customs tariff number | 84879059 |
| ETIM 9 | EC000261 |
| ETIM 8 | EC000261 |
| ECLASS 8.0 | 27180101 |
| Product description | KX Terminal box, WHD: 400x150x120 mm, sheet steel, without mounting plate, with cover, without gland plate |

Approvals

| | |
|-----------|---|
| Approvals | Bureau Veritas DNV-GL Lloyds Register of Shipping UL + C-UL (listed) |
|-----------|---|

Approvals

| Certificates | Protection category |
|--------------|--|
| Explanations | Manufacturer's declaration Declaration of conformity Declaration of conformity UK PCF-declaration |

Tender text

Enclosure (terminal box without gland plate)

Enclosure with cover:

Stable sheet steel design,
body folded from a single piece and welded,
with protection channel all-round cover opening,
rear panel with eyelets for wall mounting bracket,
cover with foamed-in PU seal,
with PE conductor connection in the enclosure
and via U-shaped bracket in the cover,
for quick and easy earthing,
with mini cam lock.

QR code:

QR code printed on body, cover and rating plate
for clear identification and easy retrieval of relevant
product information and documentation,
and for clear traceability of the individual parts.

Accessories: Cover hinge, cover retainer, mounting plate,
top hat rail, wall mounting bracket,
mounting claw for second mounting level.

Material:

Enclosure, cover: Sheet steel

Surface finish:

Triple surface treatment for optimum protection
against corrosion and resistance to mineral oils,
lubricants, machining emulsions and solvents:
Nanoceramic coating, electrophoretic dipcoat priming
Powder-coated on the outside in textured RAL 7035.

Protection category to IEC 60 529: IP 66

Protection category to UL 508A: Type 4
Dimensions (W x H x D): 400x150x120 mm