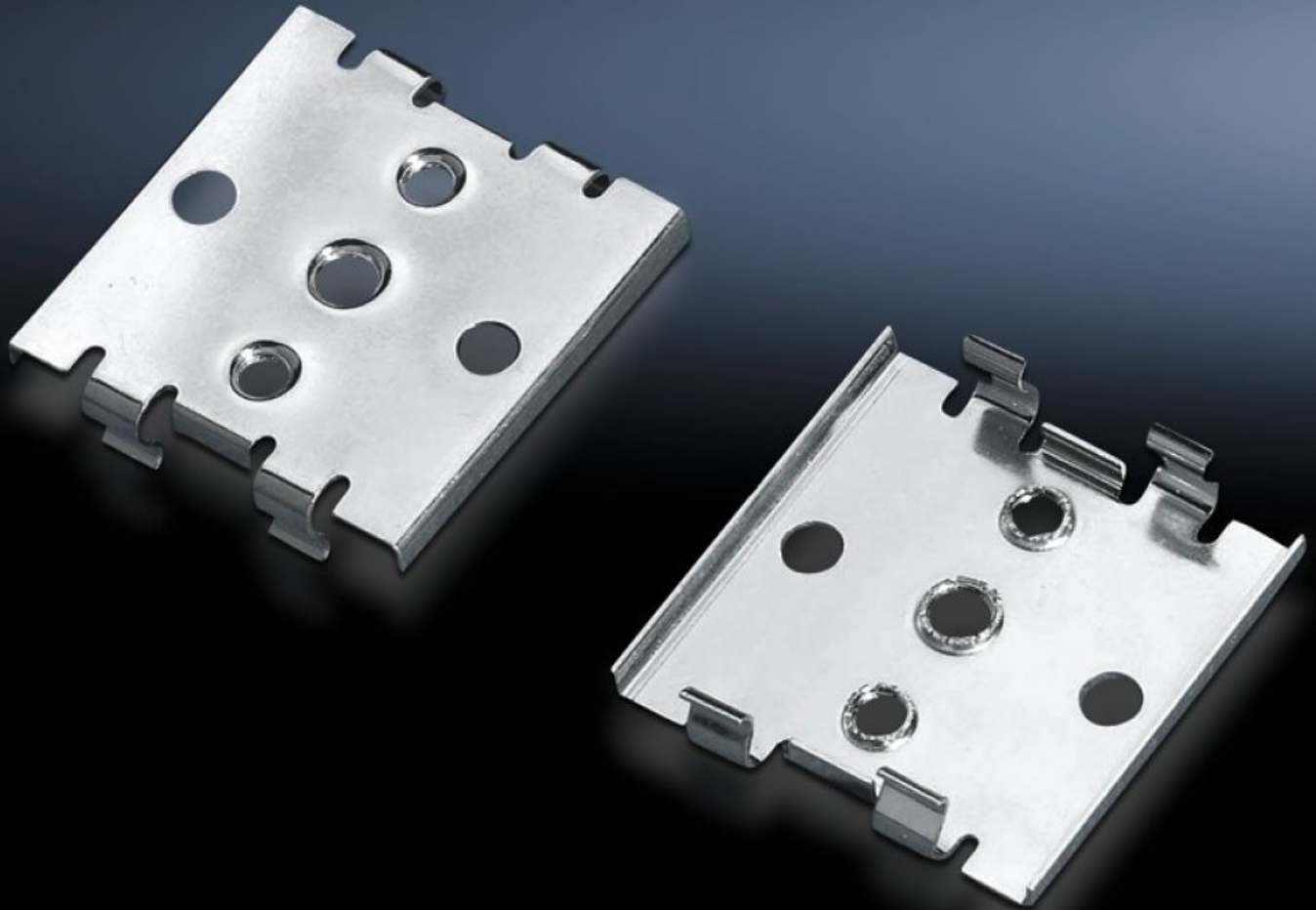


**Rittal – The System.**

Faster – better – everywhere.



# SZ 2309.000 Mounting clip

State: 23/06/2026 (Source: [rittal.com/com-en](http://rittal.com/com-en))

ENCLOSURES

POWER DISTRIBUTION

CLIMATE CONTROL

IT INFRASTRUCTURE

SOFTWARE & SERVICES

FRIEDHELM LOH GROUP



# SZ 2309.000 - Mounting clip for support rails

For fast, secure attachment of cable ducts, mounting plates, mounting angles on support rail 35/7.5 and 35/15 to EN 60 715.

## Features

Model No.	SZ 2309.000
Product description	For fast, secure attachment of cable ducts, mounting plates, mounting angles on support rail 35/7.5 and 35/15 to EN 60 715.
Benefits	Simply pre-assemble the mounting clip on the part to be installed, then snap into position on the support rail.
Material	Spring plate
Packs of	30 pc(s).
Net weight	0.18 kg
Gross weight	0.196 kg
PCF per pack (cradle-to-gate)	0.8 kg CO2 eq (Cat B)
Note on PCF category	Category B: PCF value (cradle-to-gate) based on the product weight, approximately calculated and self-declared
Customs tariff number	39269097
ETIM 9	EC002625
ETIM 8	EC002625
ECLASS 8.0	27189234
Product description	SZ Mounting clip, for support rail