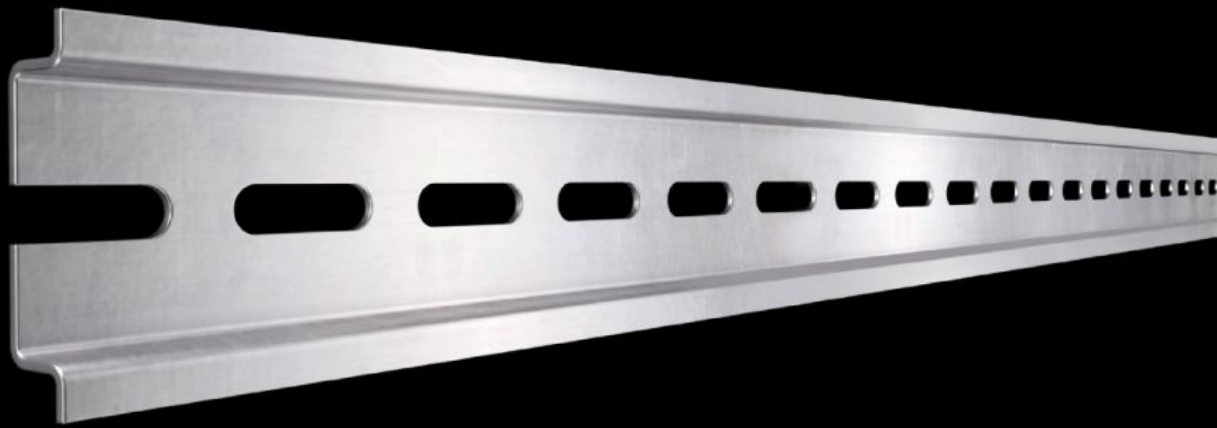


# Rittal – The System.

Faster – better – everywhere.



## SZ 2314.000

## Support rail TH 35/7.5

State: 28/06/2026 (Source: [rittal.com/com-en](http://rittal.com/com-en))

ENCLOSURES

POWER DISTRIBUTION

CLIMATE CONTROL

IT INFRASTRUCTURE

SOFTWARE & SERVICES

FRIEDHELM LOH GROUP



# SZ 2314.000 - Support rail TH 35/7.5 to EN 60 715

Length sized to the enclosure width.



## Features

Model No.	SZ 2314.000
Design	TH 35/7.5
Product description	Length sized to the enclosure width.
Material	Sheet steel
Surface finish	Zinc-plated
Length support rail	137 mm
To fit	Enclosure type: AX KX AE KL KL-HD Width: = 150 mm
Packs of	10 pc(s).
Net weight	0.41 kg
Gross weight	0.436 kg
PCF per pack (cradle-to-gate)	1.7 kg CO2 eq (Cat B)
Note on PCF category	Category B: PCF value (cradle-to-gate) based on the product weight, approximately calculated and self-declared
Customs tariff number	73269098
ETIM 9	EC001285

# Features

---

ETIM 8	EC001285
ECLASS 8.0	27189234
Product description	SZ Support rail TH 35/7.5 to EN 60 715, for W: 150 mm, L: 137 mm

---