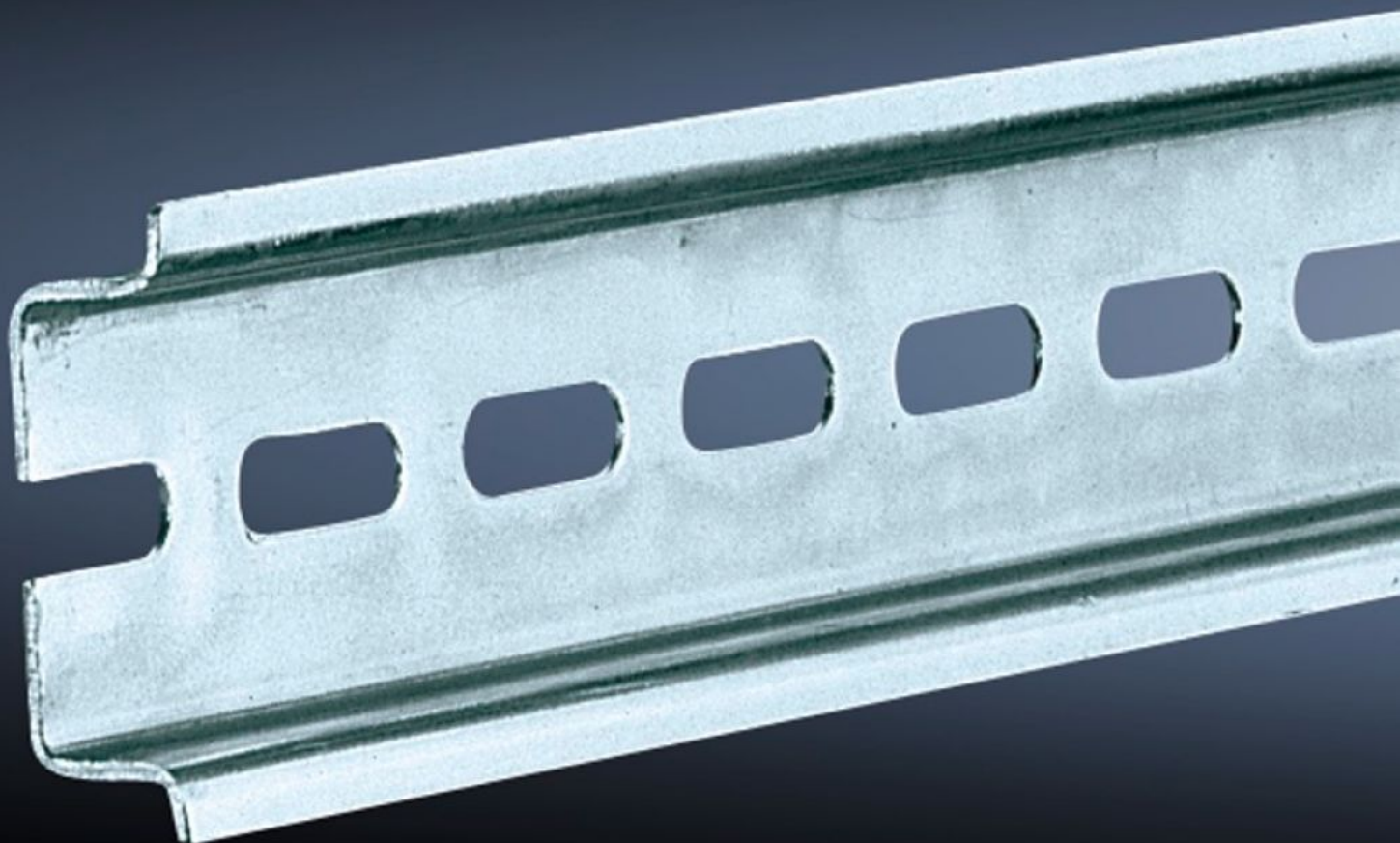


# Rittal – The System.

Faster – better – everywhere.



## SZ 2315.000

## Support rail TH 35/7.5

State: 15/08/2025 (Source: [rittal.com/com-en](https://www.rittal.com/com-en))

ENCLOSURES

POWER DISTRIBUTION

CLIMATE CONTROL

IT INFRASTRUCTURE

SOFTWARE & SERVICES

FRIEDHELM LOH GROUP



# SZ 2315.000 - Support rail TH 35/7.5 to EN 60 715

Length sized to the enclosure width.

## Features

|                               |                                                                                                                |
|-------------------------------|----------------------------------------------------------------------------------------------------------------|
| Model No.                     | SZ 2315.000                                                                                                    |
| Design                        | TH 35/7.5                                                                                                      |
| Product description           | Length sized to the enclosure width.                                                                           |
| Material                      | Sheet steel                                                                                                    |
| Surface finish                | Zinc-plated                                                                                                    |
| Length support rail           | 187 mm                                                                                                         |
| To fit                        | Enclosure type: AX<br>KX<br>AE<br>KL<br>KL-HD<br>Width: = 200 mm                                               |
| Packs of                      | 10 pc(s).                                                                                                      |
| Net weight                    | 0.6                                                                                                            |
| Gross weight                  | 0.61                                                                                                           |
| PCF per pack (cradle-to-gate) | 2.3 kg CO2 eq (Cat B)                                                                                          |
| Note on PCF category          | Category B: PCF value (cradle-to-gate) based on the product weight, approximately calculated and self-declared |
| Customs tariff number         | 73269098                                                                                                       |
| EAN                           | 4028177021020                                                                                                  |
| ETIM 9                        | EC001285                                                                                                       |
| ETIM 8                        | EC001285                                                                                                       |
| ECLASS 8.0                    | 27189234                                                                                                       |