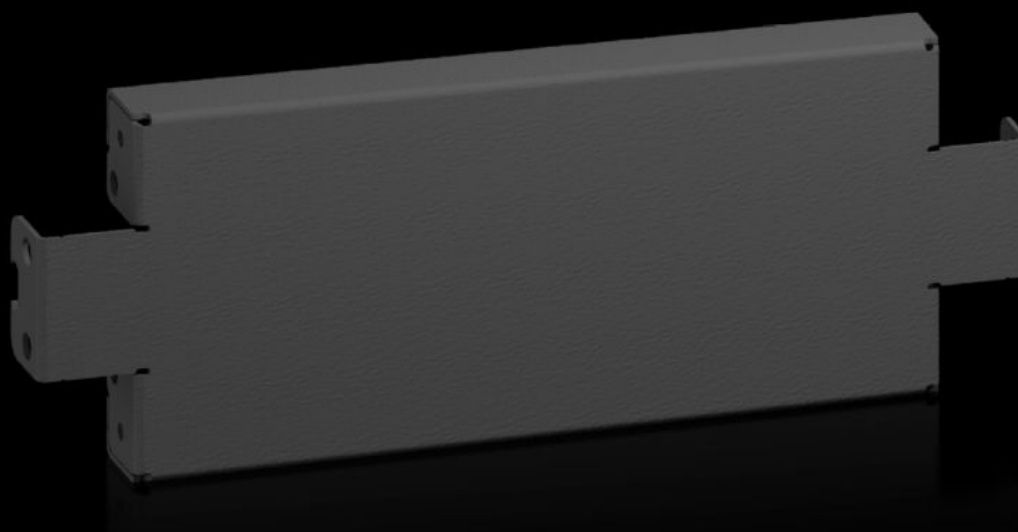


Rittal – The System.

Faster – better – everywhere.



AX 2820.410

Base/plinth trim panels, side, 100 mm

State: 27/04/2024 (Source: rittal.com/com-en)

ENCLOSURES

POWER DISTRIBUTION

CLIMATE CONTROL

IT INFRASTRUCTURE

SOFTWARE & SERVICES

FRIEDHELM LOH GROUP



AX 2820.410 - Base/plinth trim panels, side, 100 mm for AX

To finish off a base/plinth unit at the sides and for additional stabilisation or for the interior configuration of bayed base/plinths. One 200 mm high or two 100 mm high trim panels may optionally be fitted on 200 mm high base/plinths.

Features

Model No.	AX 2820.410
Product description	To finish off a base/plinth unit at the sides and for additional stabilisation or for the interior configuration of bayed base/plinths. One 200 mm high or two 100 mm high trim panels may optionally be fitted on 200 mm high base/plinths.
Material	Sheet steel
Colour	RAL 9005
Supply includes	Assembly parts
Dimensions	Height: 100 mm
To fit	Depth: = 400 mm
Type rating to UL 50E	Type 1, 3R, 4, 12
Packs of	2 pc(s).
Weight/pack	0.53 kg
Customs tariff number	94039910
EAN	4028177942530
ETIM 7.0	EC000721
ECLASS 8.0	27182003

Approvals

Approvals

Approvals

UL + C-UL - FTTA