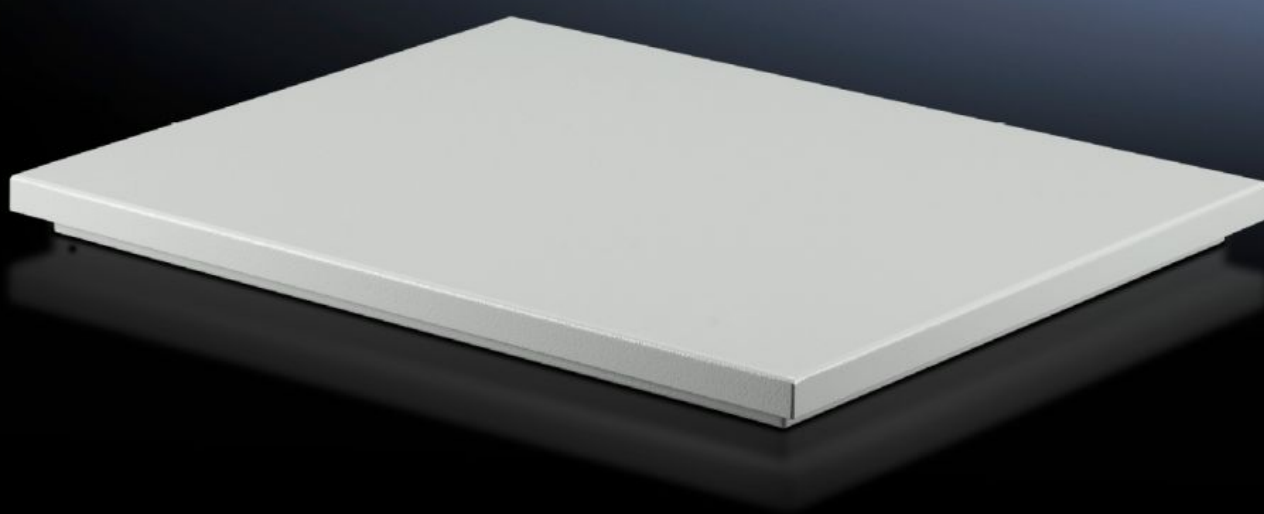
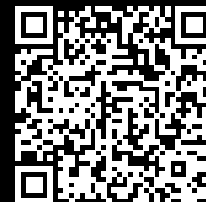


# Rittal – The System.

Faster – better – everywhere.



## SK 3149.820

## TopTherm roof-mounted fans

State: 16/07/2025 (Source: [rittal.com/com-en](http://rittal.com/com-en))

ENCLOSURES

POWER DISTRIBUTION

CLIMATE CONTROL

IT INFRASTRUCTURE

SOFTWARE & SERVICES

FRIEDHELM LOH GROUP



# SK 3149.820 - TopTherm roof-mounted fans for TS 8

The roof-mounted fans for TS fit precisely onto the cut-outs of the TopTherm roof-mounted cooling units. Also suitable for mounting on any sufficiently large roof surface. Mounting cut-outs are not compatible with successor products in the VX IT family. If reusing the roof plate in the VX IT, adaptor frame 5050.701 will be required.

## Features

Model No.	SK 3149.820
Product description	The active roof-mounted fans fit precisely onto the cut-outs of the small and medium performance category of TopTherm roof-mounted cooling units.
Product modification	Mounting cut-outs are not compatible. If reusing the roof plate, adaptor frame 5050.701 is required.
Material	Sheet steel, spray-finished
Colour	RAL 7035
Supply includes	Unit ready for connection with built-in radial fan Sealing and assembly parts
Rated operating voltage	230 V, 1~, 50 Hz/60 Hz
Power consumption Pel	At 50 Hz: 170 W At 60 Hz: 225 W
Rated current max.	At 50 Hz: 0.75 A At 60 Hz: 1.1 A
Dimensions	Width: 550 mm Height: 125 mm Depth: 370 mm
Mounting cut-out	Cut-out width: 475 mm Cut-out depth: 260 mm
IP protection category to IEC 60529	IP 43
Operating temperature range	-10 °C...55 °C

# Features

Noise level	At 50 Hz: 69 dB(A) At 60 Hz: 70 dB(A)
Packs of	1 pc(s).
Net weight	9.87
Gross weight	10.389
Customs tariff number	84145915
EAN	4028177387157
ECLASS 8.0	27180716

# Approvals

Explanations	Declaration of conformity
--------------	---------------------------