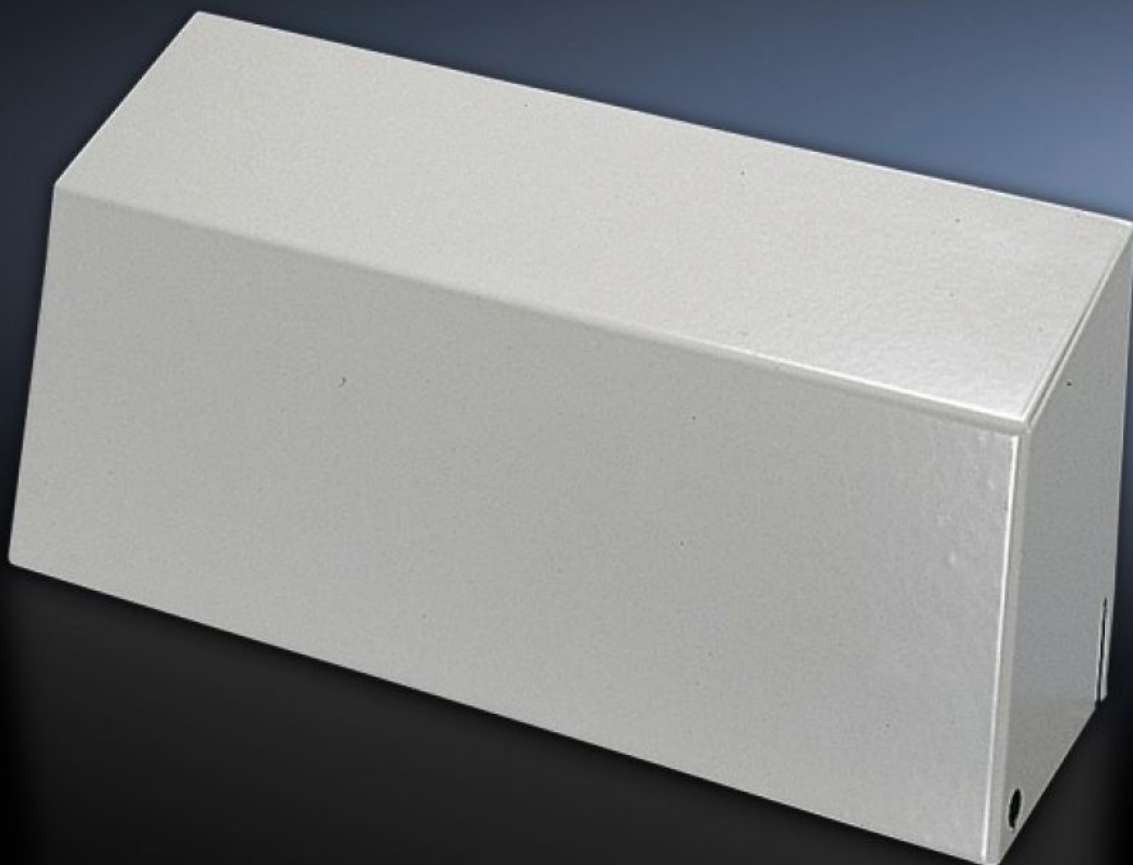


# Rittal – The System.

Faster – better – everywhere.



## SK 3213.330

## Air diverter

State: 10/09/2025 (Source: [rittal.com/com-en](http://rittal.com/com-en))

ENCLOSURES

POWER DISTRIBUTION

CLIMATE CONTROL

IT INFRASTRUCTURE

SOFTWARE & SERVICES

FRIEDHELM LOH GROUP



# SK 3213.330 - Air diverter

Targeted routing of the cold air flow to avoid hot spots in the enclosure. Particularly well-suited for densely-packed electrical components in the enclosure.

## Features

Model No.	SK 3213.330
Product description	For use with wall-mounted cooling units, for targeted routing of cold air in a downward direction. Particularly well-suited for densely-packed electrical components in the lower section of the enclosure.
Benefits	Cold air is routed downwards
Material	Sheet steel
Colour	RAL 7035
To fit	TopTherm wall-mounted cooling unit Blue e
To fit Model No.	3332.xxx
Packs of	1 pc(s).
Net weight	2
Gross weight	2.334
Customs tariff number	73269098
EAN	4028177380745
ETIM 9	EC011217
ETIM 8	EC011217
ECLASS 8.0	22410601