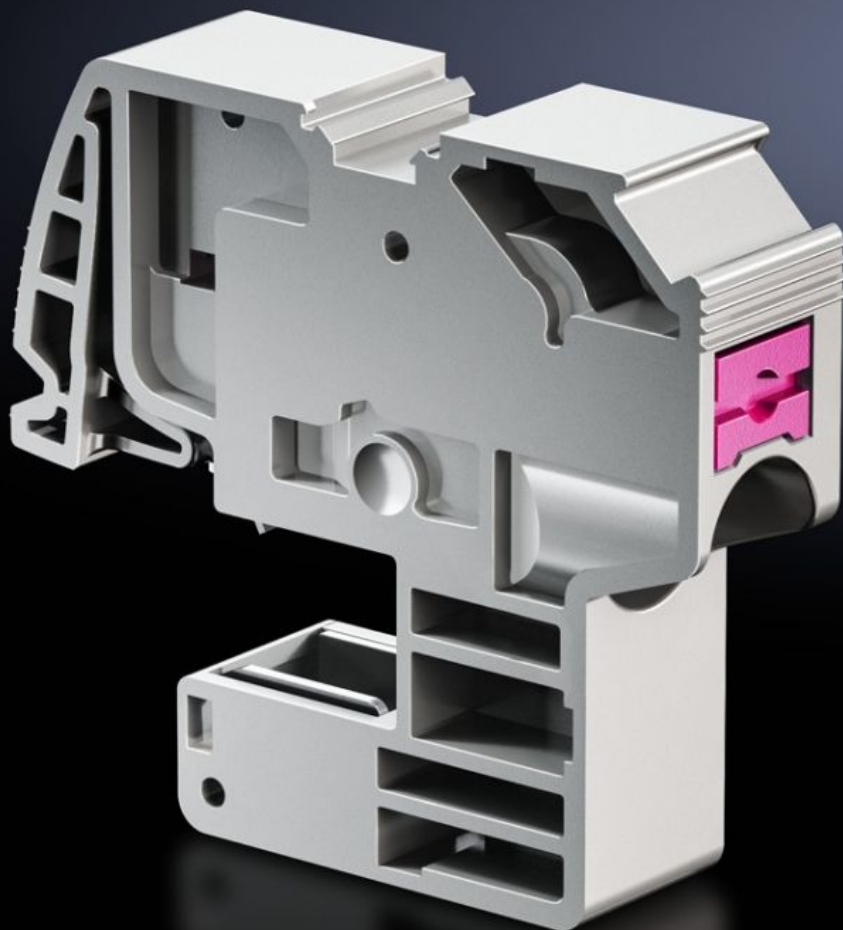


Rittal – The System.

Faster – better – everywhere.



SV 3456.505

Conductor connection clamp

State: 18/08/2025 (Source: [rittal.com/com-en](https://www.rittal.com/com-en))

ENCLOSURES

POWER DISTRIBUTION

CLIMATE CONTROL

IT INFRASTRUCTURE

SOFTWARE & SERVICES

FRIEDHELM LOH GROUP



SV 3456.505 - Conductor connection clamp Push-in

For the connection of round conductors.

Features

| | |
|--------------------------------------------------------------------|-----------------------------------------------------------------------------------------------------------------------------------------------------------------------------------|
| Model No. | SV 3456.505 |
| Benefits | Maintenance-free Time-saving top-mounting Terminal box with integral label panels Universal conductor connection |
| Applications | For use as busbar pick-off of L, N or PE conductors in switchgear and controlgear, and as a conductor connection clamp in meter boxes. For mounting on E-Cu or CUPONAL busbars |
| Function principle | Fully insulated terminal for tool-free conductor connection Conductor is released by the integral release pin |
| Material | Polyamide Fire protection corresponding to UL 94-V0 |
| Colour | RAL 7042 |
| Test specification | IEC 60 999-1 IEC 60 947-7-1/-2 |
| Connection of round conductors, fine wire with wire end ferrule | 1.5 - 16 mm ² |
| Connection of round conductors, fine wire without wire end ferrule | 1.5 - 16 mm ² |
| Connection of round conductors, multi-wire | 1.5 - 16 mm ² |
| Connection of round conductors, single-wire | 1.5 - 16 mm ² |
| For bar thickness | 10 mm |
| Packs of | 10 pc(s). |
| Net weight | 0.23 |

Features

| | |
|-------------------------------|----------------------------------------------------------------------------------------------------------------|
| Gross weight | 0.241 |
| PCF per pack (cradle-to-gate) | 0.9 kg CO2 eq (Cat B) |
| Note on PCF category | Category B: PCF value (cradle-to-gate) based on the product weight, approximately calculated and self-declared |
| Customs tariff number | 85369010 |
| EAN | 4028177813991 |
| ETIM 9 | EC000001 |
| ETIM 8 | EC000001 |
| ECLASS 8.0 | 27141146 |

Approvals

| | |
|--------------|--------------------------------------------------------------|
| Approvals | ABS Lloyds Register of Shipping UR + C-UR (recognized) |
| Explanations | Declaration of conformity |