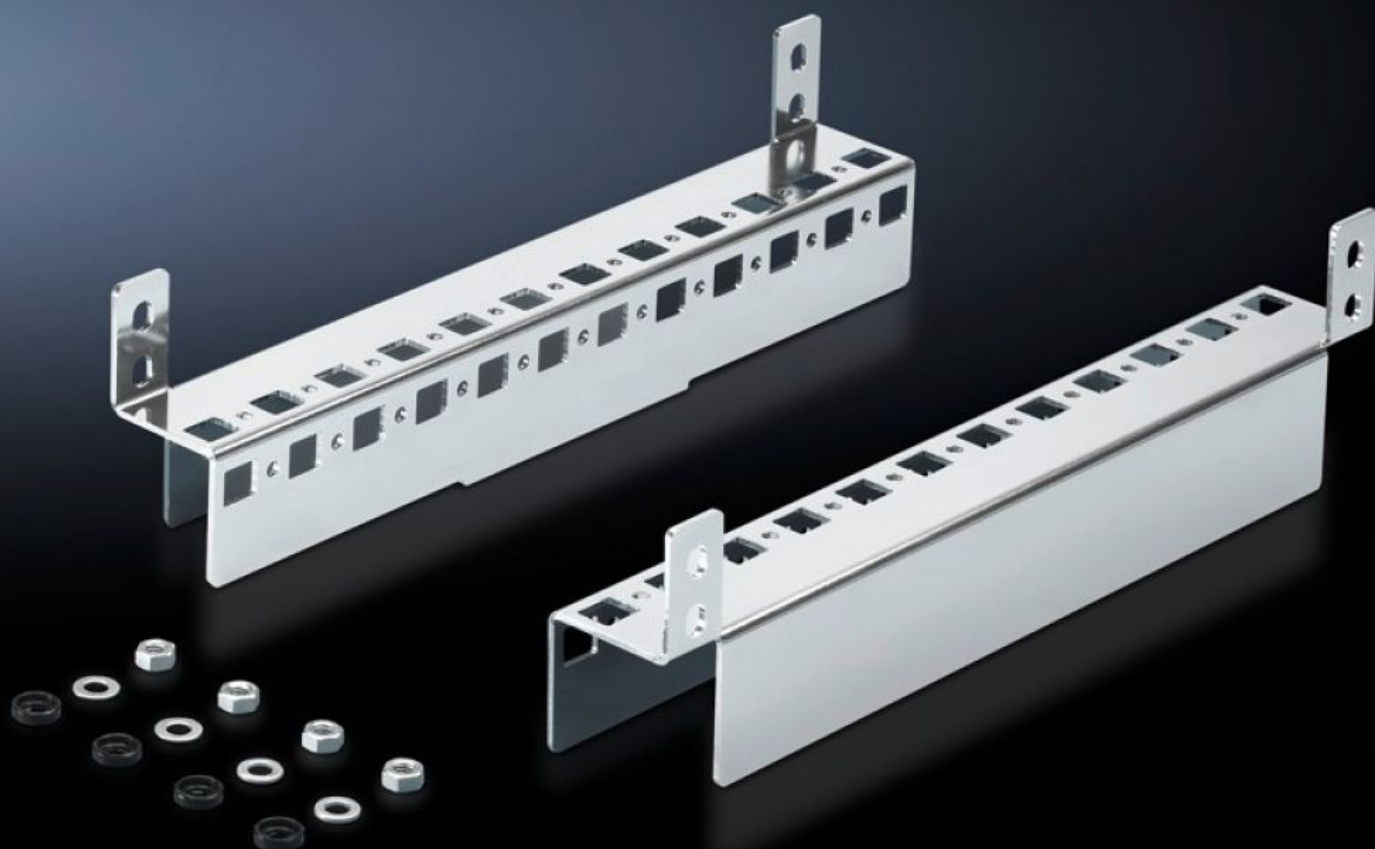


# Rittal – The System.

Faster – better – everywhere.



## CM 5001.371

## Base configuration rail

State: 25/05/2025 (Source: [rittal.com/com-en](http://rittal.com/com-en))

ENCLOSURES

POWER DISTRIBUTION

CLIMATE CONTROL

IT INFRASTRUCTURE

SOFTWARE & SERVICES

FRIEDHELM LOH GROUP



# CM 5001.371 - Base configuration rail for TP

For mounting in the enclosure depth, on the existing threaded bolts, no machining required.  
System punchings on 2 sides. Creates additional installation options.



## Features

Model No.	CM 5001.371
Product description	For mounting in the enclosure depth, on the existing threaded bolts, no machining required. System punchings on 2 sides. Creates additional installation options.
Material	Sheet steel
Surface finish	Zinc-plated
Supply includes	Assembly parts
To fit	Enclosure type: TP Depth: = 300 mm
Packs of	2 pc(s).
Net weight	0.6
Gross weight	0.687
Customs tariff number	73269098
EAN	4028177620605
ETIM 9	EC002625
ETIM 8	EC002625
ECLASS 8.0	27189234