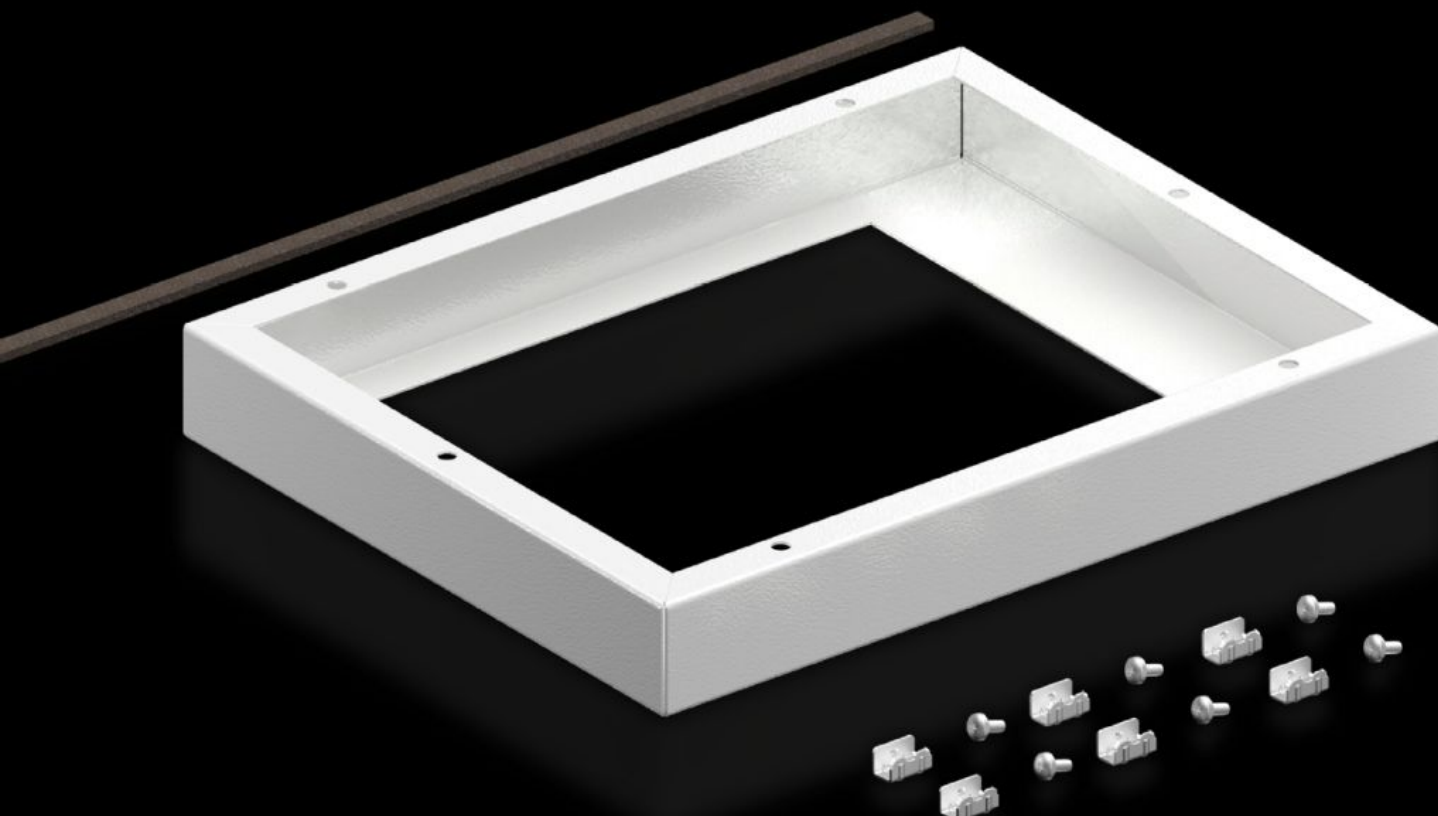


Rittal – The System.

Faster – better – everywhere.



SK 5050.702

Adaptor frame for roof-mounted fans

State: 13/09/2025 (Source: rittal.com/com-en)

ENCLOSURES

POWER DISTRIBUTION

CLIMATE CONTROL

IT INFRASTRUCTURE

SOFTWARE & SERVICES

FRIEDHELM LOH GROUP



SK 5050.702 - Adaptor frame for roof-mounted fans

For mounting the latest generation of roof-mounted fans on roof plates with cut-out provided.
With cut-out W x D 258 x 258 mm.

Features

Model No.	SK 5050.702
Supply includes	Assembly parts
Mounting cut-out	Width:258 mm Depth:258 mm
Dimensions	Width: 530 mm Height: 50 mm Depth: 430 mm
Packs of	1 pc(s).
Net weight	3.72
Gross weight	3.92
Customs tariff number	73269098
EAN	4028177951938
ETIM 9	EC000320
ECLASS 8.0	29170101