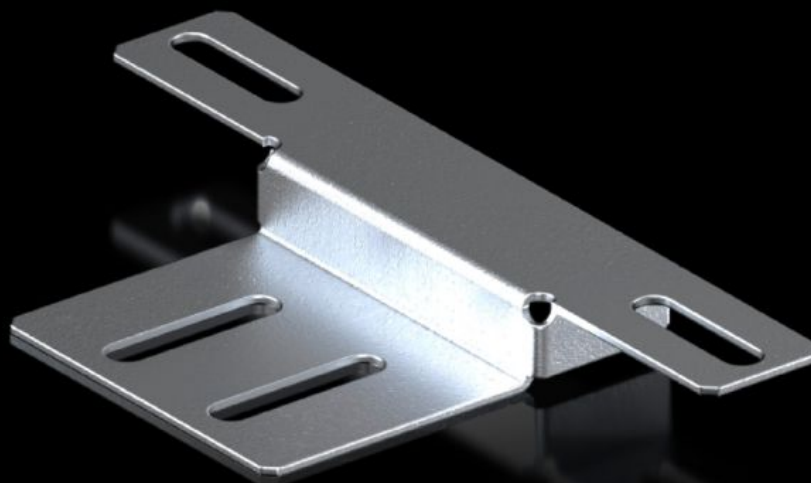
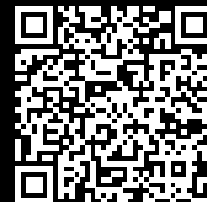


# Rittal – The System.

Faster – better – everywhere.



## IT 5302.123

## Mounting angles additional fastening attachment

State: 08/02/2026 (Source: [rittal.com/com-en](http://rittal.com/com-en))

ENCLOSURES

POWER DISTRIBUTION

CLIMATE CONTROL

IT INFRASTRUCTURE

SOFTWARE & SERVICES

FRIEDHELM LOH GROUP



# IT 5302.123 - Mounting angles additional fastening attachment for VX IT 482.6 mm (19") mounting angles, standard

Additional fastening attachment for mounting angles for VX IT to counteract unevenly distributed loads.

## Features

Model No.	IT 5302.123
Product description	Prevents the mounting angles from twisting in case of unevenly distributed loads. Secured directly between the mounting angle and a mounting section on the outer mounting level of the VX frame structure.
Benefits	Can also be used as individual fastening with 482.6 mm (19") partial installation
Applications	For fixing the 482.6 mm (19") mounting angle, standard, onto the outer mounting level
Material	Sheet steel
Surface finish	Spray-finished
Colour	RAL 9005
Supply includes	Assembly parts
To fit	Width: = 600 mm
Packs of	2 pc(s).
Net weight	0.24
PCF per pack (cradle-to-gate)	1 kg CO2 eq (Cat B)
Note on PCF category	Category B: PCF value (cradle-to-gate) based on the product weight, approximately calculated and self-declared
Customs tariff number	83024900
EAN	4028177955516

# Features

ETIM 9	EC002625
ECLASS 8.0	27189234