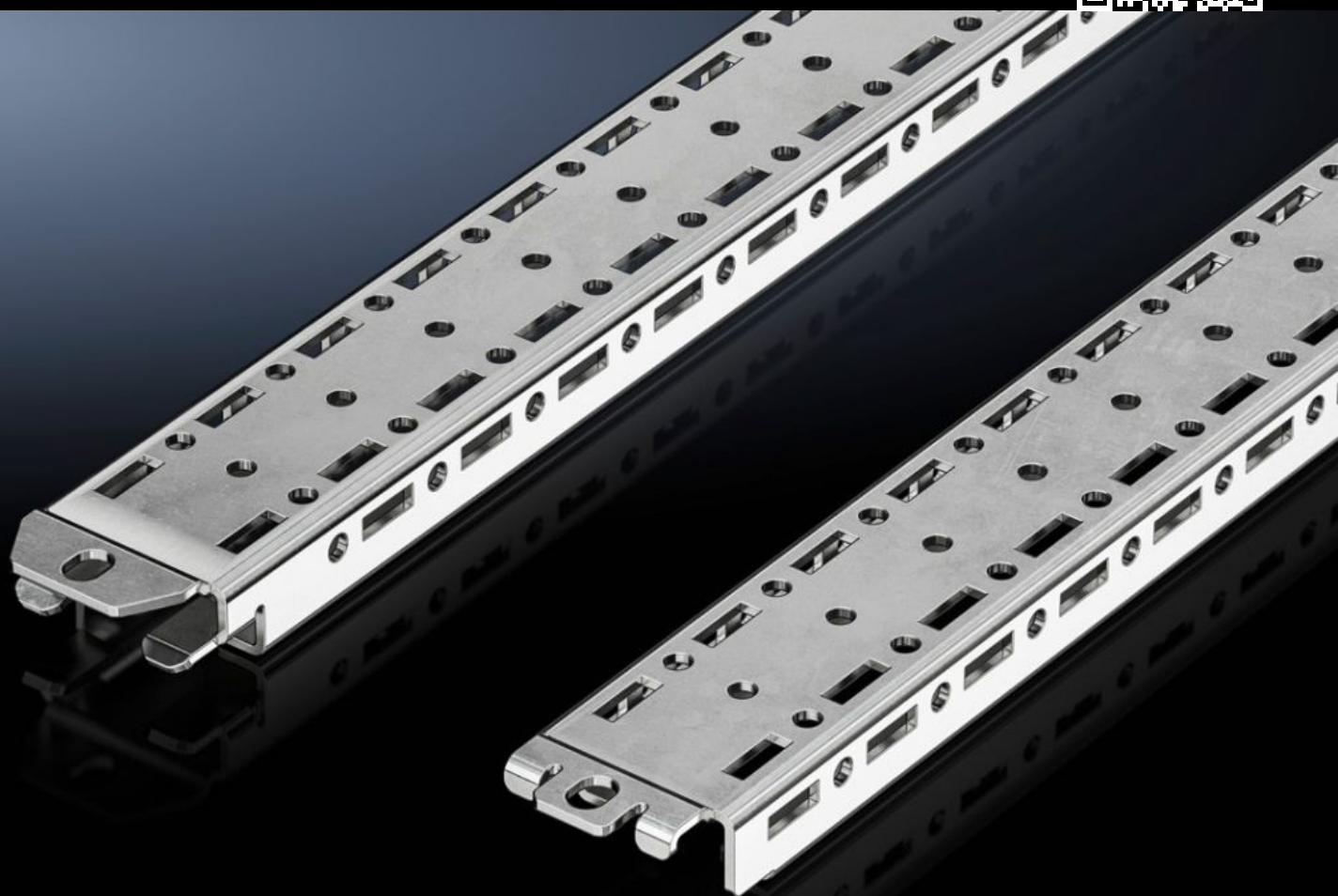
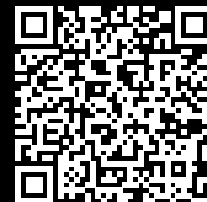


Rittal – The System.

Faster – better – everywhere.



VX 5302.170 Support rail

State: 22/05/2026 (Source: rittal.com/com-en)

ENCLOSURES

POWER DISTRIBUTION

CLIMATE CONTROL

IT INFRASTRUCTURE

SOFTWARE & SERVICES

FRIEDHELM LOH GROUP



VX 5302.170 - Support rail for VX IT

Features

| | |
|-------------------------------|--|
| Model No. | VX 5302.170 |
| Product description | For attaching mounting angles in enclosures > 1000 mm deep and 800 mm wide when using depth stays. The support rail improves load distribution in network/server racks. |
| Technical specifications | Side round and square punchings |
| Material | Sheet steel |
| Supply includes | Assembly parts |
| Assembly instruction | The support rail is screw-fastened onto the centre of the frame structure at right-angles below the depth stays |
| To fit | Width: = 800 mm Depth: > 1,000 mm |
| Packs of | 1 pc(s). |
| Net weight | 0.83 kg |
| Gross weight | 0.961 kg |
| PCF per pack (cradle-to-gate) | 3.7 kg CO2 eq (Cat B) |
| Note on PCF category | Category B: PCF value (cradle-to-gate) based on the product weight, approximately calculated and self-declared |
| Customs tariff number | 73269098 |
| ETIM 9 | EC002620 |
| ECLASS 8.0 | 27189261 |
| Product description | Support rail for VX IT, for attachment of mounting angles in enclosures with depth > 1000 mm and width 600 mm or 800 mm when depth stays are deployed. The support rail improves load distribution |