

Rittal – The System.

Faster – better – everywhere.



PC 5366.450 PC enclosure system

State: 05/04/2026 (Source: rittal.com/com-en)

ENCLOSURES

POWER DISTRIBUTION

CLIMATE CONTROL

IT INFRASTRUCTURE

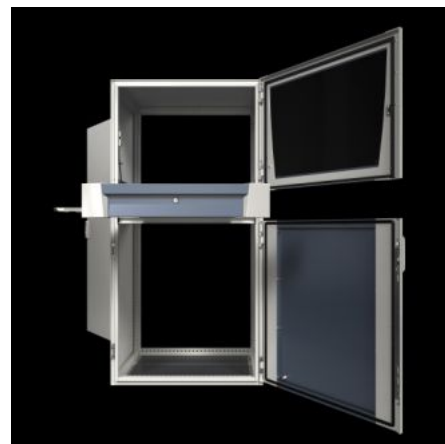
SOFTWARE & SERVICES

FRIEDHELM LOH GROUP



PC 5366.450 - PC enclosure system

Secure accommodation of all PC components, from monitors, to PCs, to keyboards. For ultimate ease of operation in a modern design. Perfect protection from humidity and dirt, temperature fluctuations and unauthorised access.



Features

Model No.	PC 5366.450
Design	with keyboard drawer and large mounting compartment
Product description	Secure accommodation of all PC components, from monitors, to PCs, to keyboards. For ultimate ease of operation in a modern design. Perfect protection from humidity and dirt, temperature fluctuations and unauthorised access.
Material	Enclosure, door, rear door, mounting compartment, supports: Sheet steel Handles, decorative trim panels: Plastic Door trim panels: Aluminium Mounting compartment, support: Sheet steel
Surface finish	Enclosure and door: Dipcoat primed, powder-coated on the outside, textured paint Mounting compartment, support: powder-coated
General colour	RAL 7035
Colour	Enclosure, door, decorative trim panels, supports: RAL 7035 Handle: RAL 7015 Monitor panel, door centre part: RAL 7015

Features

Supply includes	Enclosure, door, rear door Gland plates Keyboard drawer Mounting compartment, large
Dimensions	Width: 600 mm Height: 1,600 mm Depth: 636 mm
IP protection category to IEC 60529	IP 55
Protection category NEMA	NEMA 12
Type rating to UL 50E	Type 1 Type 12
Max. keyboard dimensions (WxHxD)	480 x 70 x 260 mm
Basic material	Sheet steel
Packs of	1 pc(s).
Net weight	89.5 kg
Gross weight	92 kg
PCF per pack (cradle-to-gate)	371.5 kg CO2 eq (Cat B)
Note on PCF category	Category B: PCF value (cradle-to-gate) based on the product weight, approximately calculated and self-declared
Customs tariff number	94032080
ETIM 9	EC002502
ECLASS 8.0	27180501
Product description	PC PC enclosure system, WHD: 600x1600x636 mm, Sheet steel, keyboard drawer, large mounting compartment

Approvals

Approvals	UL + C-UL (listed)
-----------	--------------------

Approvals

Certificates

Surface finish

Explanations

Declaration of conformity

Declaration of conformity UK

Tender text

PC-Enclosure with large mounting compartment and keyboard drawer

Enclosure for stand-alone siting, consisting of solid body, large mounting compartment, keyboard drawer, bottom door, rear door and welded base assembly.

Enclosure body with profiled mouting angles at the front and rear on sidewalls and roof. System slots on a 25 mm pitch pattern, all round, for individual interior installation and two pairs of mounting angles for powder-coated on the outside, textured paint

Large mounting compartment:

Hinged on right-hand side, at left-hand side screw-fastened from the inside, installation plate folded, decorative side trim panels

Drawer for keyboard:

Housing with keyboard extension piece plus pull-out mousepad

Front trim panel with handlestrips, folded as handrest, with lock insert No.3524 E

with unlocking device for glazed door, top max. keyboard dimensions (WxHxD): 480x70x260 mm

Bottom door:

Vertical bars with locking rod and double-bit insert, hinged on right-hand side door resp. installation plate folded

Rear door:

With locking rod and double-bit insert, hinged on right hand side

With gland plates, divided

Material:

Enclosure, door, rear door, mounting compartment,
supports: Sheet steel

Handles, decorative trim panels: Plastic

Door trim panels: Aluminium

Mounting compartment, support: Sheet steel

Gland plate: Sheet steel, galvanized

Surface finish:

Enclosure and door: Dipcoat primed,
powder-coated on the outside, textured paint

Mounting compartment, support: powder-coated

Colour:

Enclosure, door, decorative trim panels, supports: RAL 7035

Handle: RAL 7015

Monitor panel, door centre part: RAL 7015

Protection class:

IP to IEC 60 529: IP55

NEMA: NEMA 12

Dimensions WHD: 600 x 1600 x 636 mm

Model No.: 5366450

Manufacturer: Rittal GmbH & Co.KG