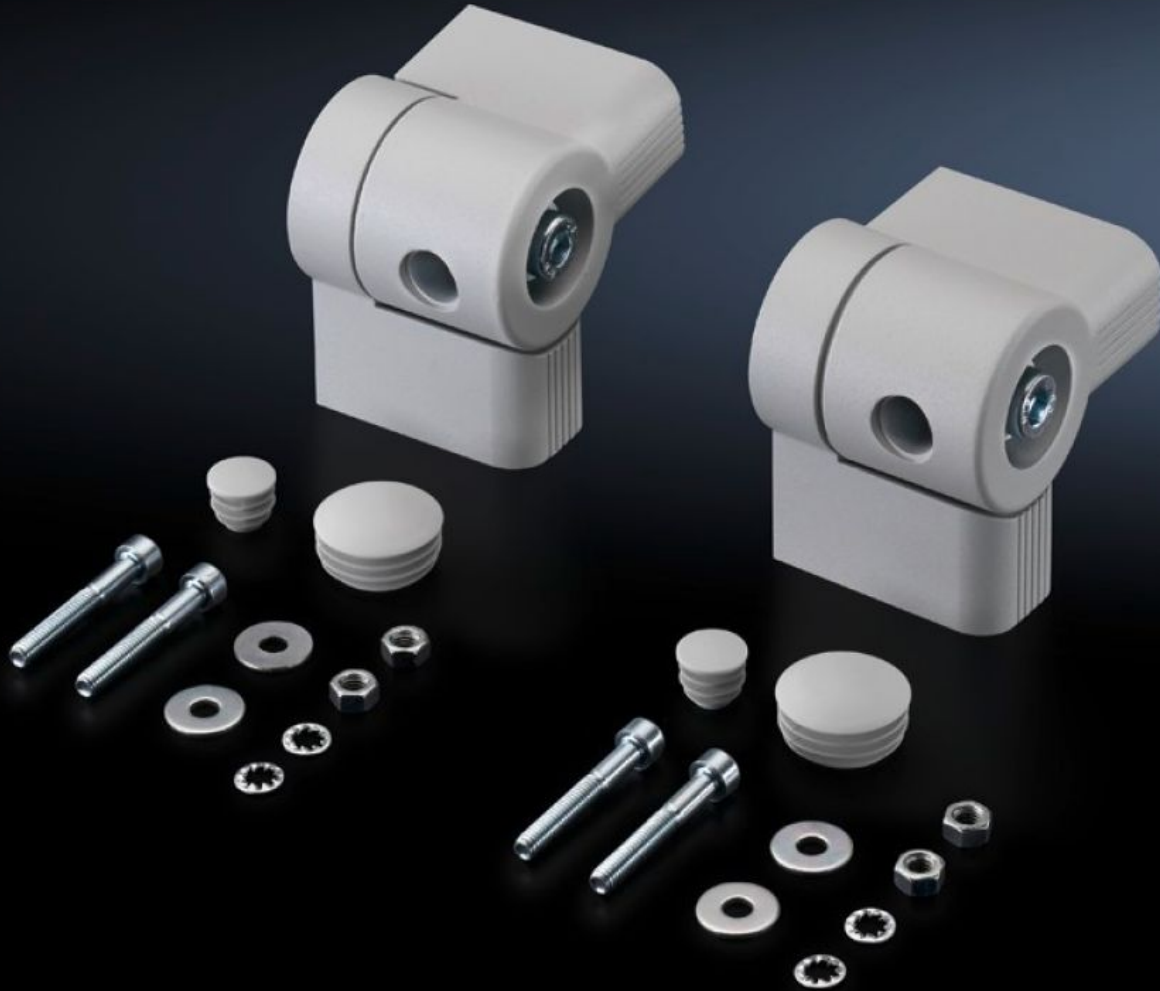
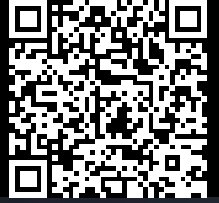


Rittal – The System.

Faster – better – everywhere.



CP 6016.200 Enclosure connectors

State: 25/04/2026 (Source: rittal.com/com-en)

ENCLOSURES

POWER DISTRIBUTION

CLIMATE CONTROL

IT INFRASTRUCTURE

SOFTWARE & SERVICES

FRIEDHELM LOH GROUP



CP 6016.200 - Enclosure connectors Adjustable

For use between Command Panels, terminal boxes, compact enclosures and horizontal or vertical surfaces. Pre-mount the connector halves on both sides, screw together and secure with a locking screw, and/or adjust the angle of rotation.



Features

Model No.	CP 6016.200
Product description	For use between Command Panels, terminal boxes, compact enclosures and horizontal or vertical surfaces. Pre-mount the connector halves on both sides, screw together and secure with a locking screw, and/or adjust the angle of rotation.
Material	Die-cast zinc
Surface finish	Powder-coated
Colour	RAL 7035
Supply includes	Assembly parts for both sides.
Note	The locking screws may be exchanged for standard, commercially available clamping levers (M10 x 50 mm).
Rotation angle/swivel area	$\pm 105^\circ$ adjustable in 7.5° stepped increments.
Packs of	2 pc(s).
Net weight	1.6 kg
Gross weight	1.778 kg
Customs tariff number	79070000
ETIM 9	EC002622

Features

ECLASS 8.0

27189263

Product description

CP Enclosure connectors, adjustable