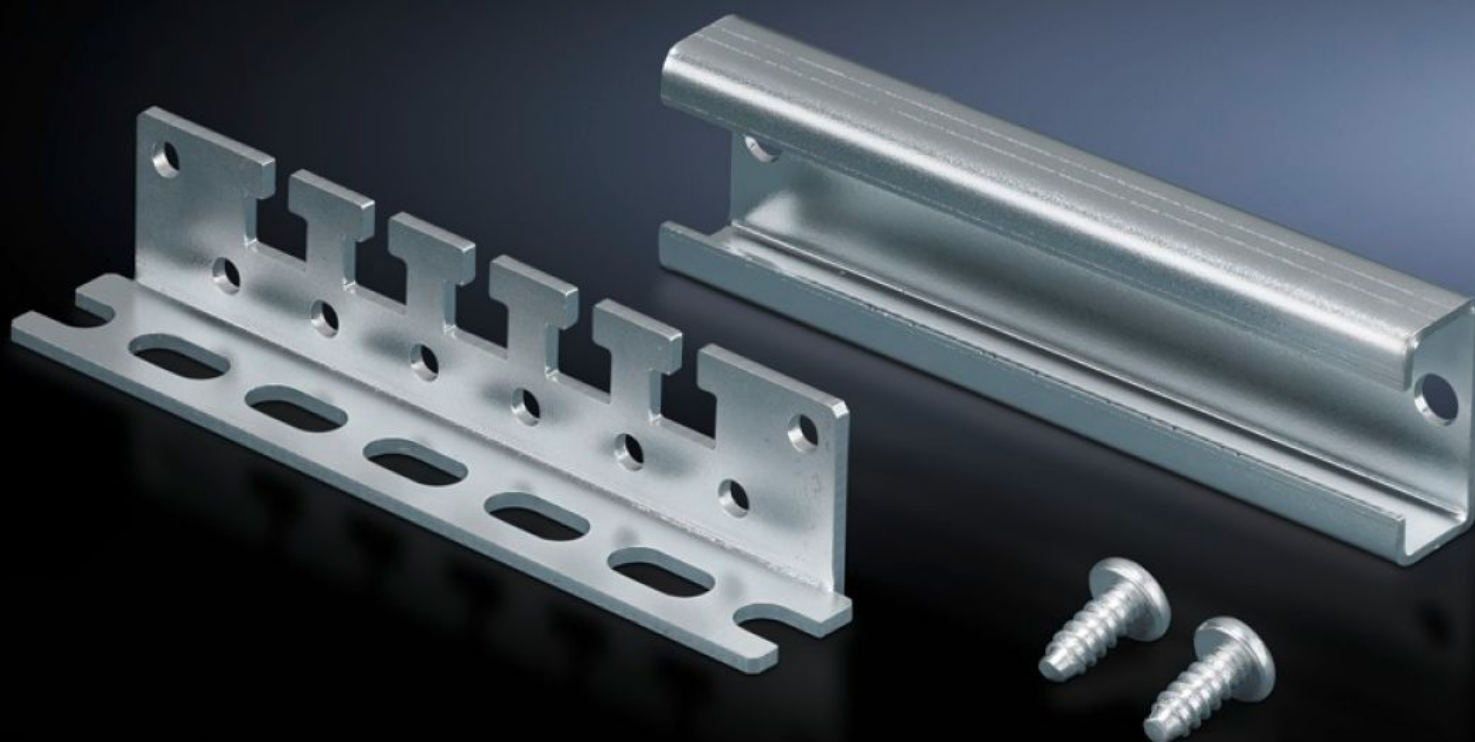
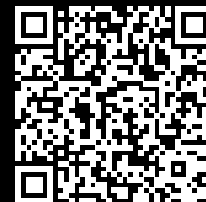


# Rittal – The System.

Faster – better – everywhere.



## CP 6052.000 Cable clamping bracket

State: 11/08/2025 (Source: [rittal.com/com-en](http://rittal.com/com-en))

ENCLOSURES

POWER DISTRIBUTION

CLIMATE CONTROL

IT INFRASTRUCTURE

SOFTWARE & SERVICES

FRIEDHELM LOH GROUP



# CP 6052.000 - Cable clamping bracket

For installing in the operating housing with support arm cut-out Ø 130 mm or 120 x 65 mm, cable clamping optionally via cable clamps or cable ties.



## Features

Model No.	CP 6052.000
Product description	Cable clamping optionally by means of cable clamps, cable ties 2597.000 or commercially available cable ties.
Applications	For installation in command panels with mounting cut-out 120 x 65 mm or Ø 130 mm
Material	Sheet steel
Surface finish	Zinc-plated
Supply includes	C rail and screws.
Note	Bracket height = 25 mm with fitted C rail 40 mm.
Packs of	1 pc(s).
Net weight	0.146
Gross weight	0.156
PCF per pack (cradle-to-gate)	0.6 kg CO2 eq (Cat B)
Note on PCF category	Category B: PCF value (cradle-to-gate) based on the product weight, approximately calculated and self-declared
Customs tariff number	73269098
EAN	4028177188273
ETIM 9	EC000322

# Features

ECLASS 8.0

27400604