

# Rittal – The System.

Faster – better – everywhere.



## CP 6380.610 Optipanel

State: 26/06/2026 (Source: [rittal.com/com-en](http://rittal.com/com-en))

ENCLOSURES

POWER DISTRIBUTION

CLIMATE CONTROL

IT INFRASTRUCTURE

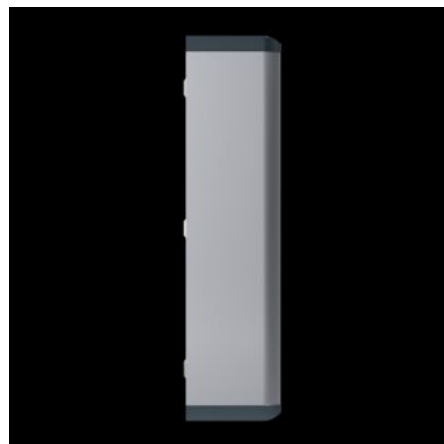
SOFTWARE & SERVICES

FRIEDHELM LOH GROUP



# CP 6380.610 - Optipanel

Aluminium enclosure, high thermal conductivity for optimum passive heat dissipation. For smaller panels and control solutions. Super-slimline design, needs hardly more space than the installed equipment itself.



## Features

Model No.	CP 6380.610
Design	Support arm connection Ø 130 mm
Benefits	Aluminium enclosure, high thermal conductivity for optimum passive heat dissipation. Low weight coupled with high stability Compatible with all Rittal stand and support arm systems
Material	Enclosure: Extruded aluminium section Corner pieces: Die-cast zinc Corner protectors: Plastic
General colour	Natural anodised
Colour	Enclosure: Natural anodised Corner pieces: RAL 7035 Corner protectors: similar to RAL 7024
Supply includes	Enclosure with hinged rear panel Seals Seals and assembly parts for front panels
Installation depth	150 mm

# Features

IP protection category to IEC 60529	IP 65
To fit front panel width	520 mm
To fit front panel height	600 mm
Design	Servicing access from the rear
Note	The support arm connection may be swapped over by rotating the enclosure 3 mm double-bit lock insert may be exchanged for 41 mm lock inserts, plastic handles and T handles, type C Hinging of the rear panel on the longest enclosure side
Basic material	Aluminium
Lock	Lock version: Cam Number of locks: 2 Lock insert: 3 mm double-bit
Packs of	1 pc(s).
Net weight	11.542 kg
Gross weight	12.149 kg
Customs tariff number	94032080
ETIM 9	EC002504
ECLASS 8.0	27180505
Product description	CP Optipanel, for front panel BH 520x600 mm, installation depth 150 mm, Extruded aluminum section, Support arm connection Ø 130 mm

# Approvals

Approvals	UL + C-UL (listed)
Explanations	Declaration of conformity Declaration of conformity UK