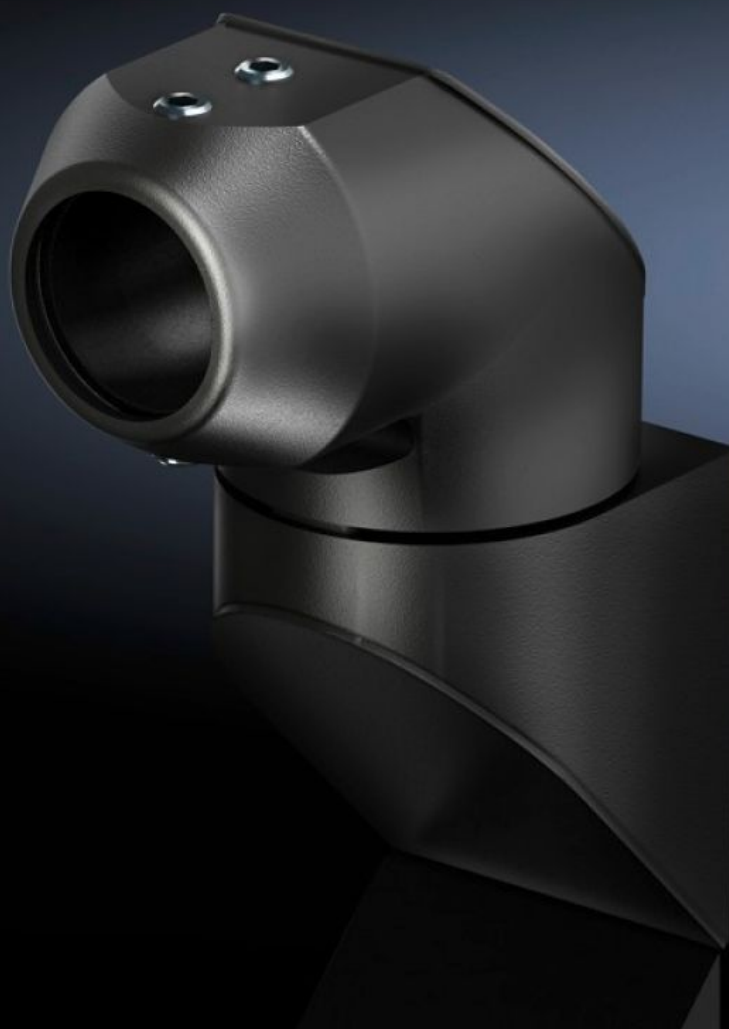
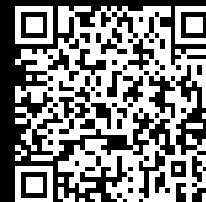


**Rittal – The System.**

Faster – better – everywhere.



**CP 6501.150**

**Wall-mounted hinge CP, 40, steel**

State: 11/09/2025 (Source: [rittal.com/com-en](http://rittal.com/com-en))

ENCLOSURES

POWER DISTRIBUTION

CLIMATE CONTROL

IT INFRASTRUCTURE

SOFTWARE & SERVICES

FRIEDHELM LOH GROUP



# CP 6501.150 - Wall-mounted hinge CP, 40, steel

For swivel mounting of the support arm on vertical surfaces.

## Features

Model No.	CP 6501.150
Material	Cast aluminium
Surface finish	Textured paint
Colour	RAL 7024
Rotating/tilting	Yes
Rotation angle/swivel area	approx. 330°, provided the top joint is able to move freely
Packs of	1 pc(s).
Net weight	2.119
Gross weight	2.128
Customs tariff number	76169990
EAN	4028177436077
ETIM 9	EC000882
ECLASS 8.0	27400556

## Approvals

Explanations	Manufacturer's declaration
--------------	----------------------------