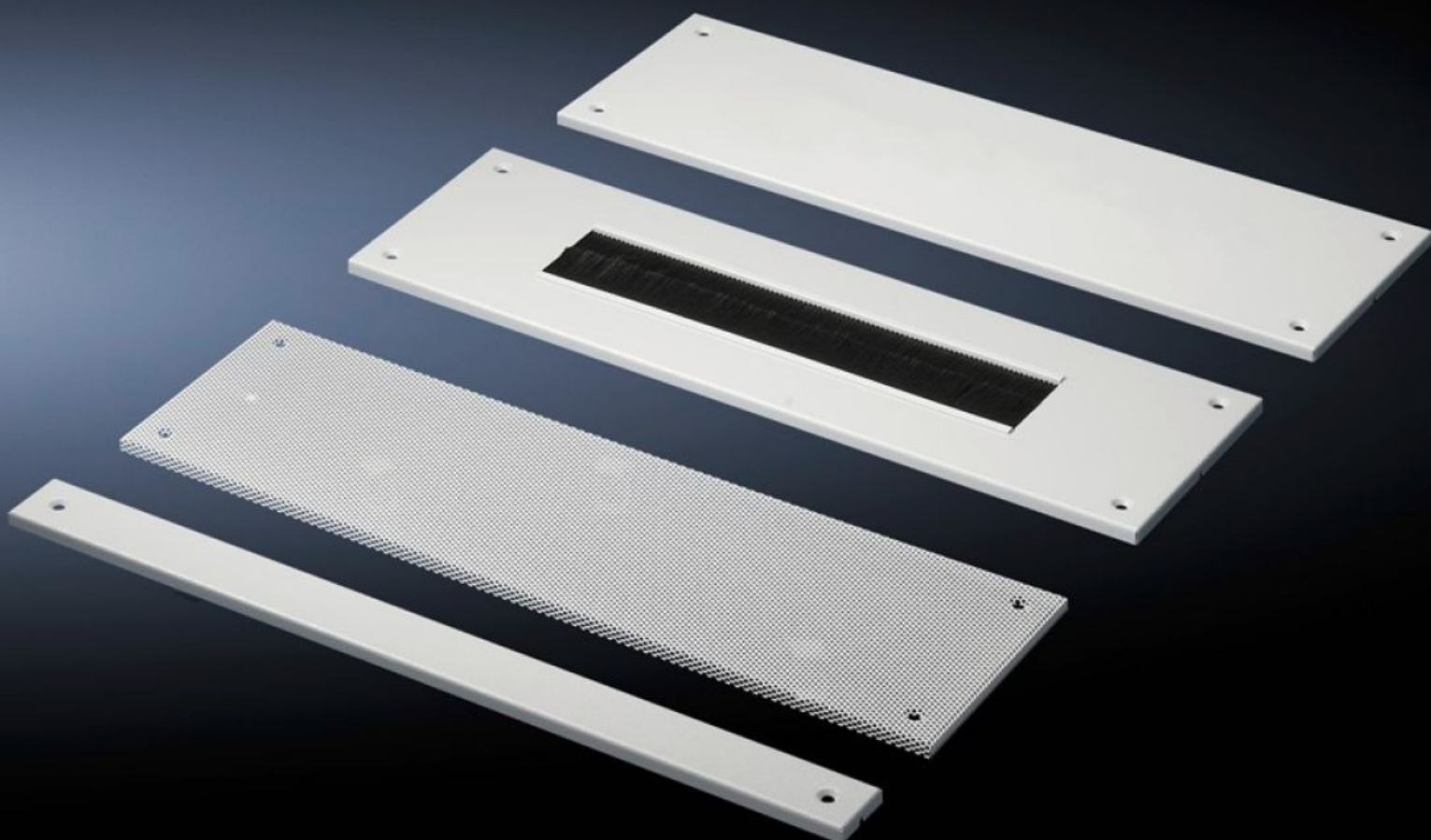
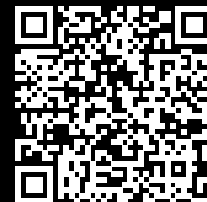


Rittal – The System.

Faster – better – everywhere.



TE 7526.785 Module plates

State: 17/07/2025 (Source: rittal.com/com-en)

ENCLOSURES

POWER DISTRIBUTION

CLIMATE CONTROL

IT INFRASTRUCTURE

SOFTWARE & SERVICES

FRIEDHELM LOH GROUP



TE 7526.785 - Module plates for TE

The base area of the TE may be varied as required using the module plates.

Features

Model No.	TE 7526.785
Design	solid
Product description	The base area of the TE may be varied as required using the module plates.
Applications	Please note when selecting suitable gland plates: Enclosure width minus 150 mm Enclosure depth minus 50 mm
Material	Sheet steel, zinc-plated
Supply includes	Assembly parts
Note on Model No.	Extended delivery times.
Dimensions	Width: 650 mm Depth: 550 mm
To fit	Enclosure type: TE Width: 800 mm
Packs of	1 pc(s).
ETIM 9	EC002620
ECLASS 8.0	27189261