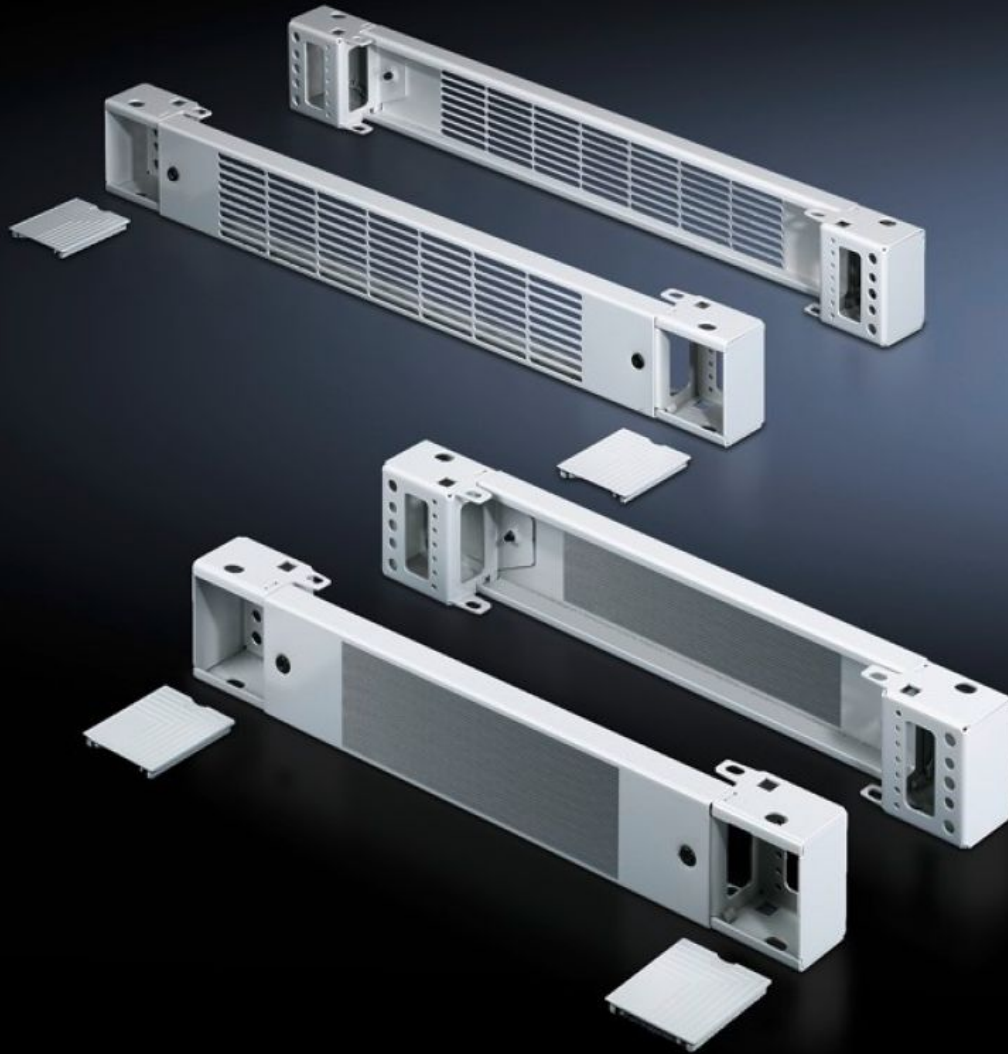


Rittal – The System.

Faster – better – everywhere.



TS 7825.601

Base/plinth components, front and rear, 100 mm

State: 21/06/2026 (Source: rittal.com/com-en)

ENCLOSURES

POWER DISTRIBUTION

CLIMATE CONTROL

IT INFRASTRUCTURE

SOFTWARE & SERVICES

FRIEDHELM LOH GROUP



TS 7825.601 - Base/plinth components, front and rear, 100 mm Sheet steel, for TS, TS IT, SE, CM, TP, PC, IW, TE

Base/plinth component consisting of one trim panel and two pre-configured corner pieces.

Features

Model No.	TS 7825.601
Design	Vented
Product description	Base/plinth component consisting of one trim panel and two pre-configured corner pieces.
Material	Base/plinth components: Sheet steel Cover caps: Plastic
Surface finish	Spray-finished
Colour	RAL 7035 Cover caps: RAL 7035
Supply includes	2 base/plinth components 4 cover caps Assembly parts
Dimensions	Height: 100 mm
To fit	Enclosure type: TS: = 600 mm Enclosure type: SE Enclosure type: CM Enclosure type: TP Enclosure type: PC Enclosure type: IW Enclosure type: TS IT
Packs of	2 pc(s).
Net weight	3.3 kg
Gross weight	3.804 kg
Customs tariff number	94039910
ECLASS 8.0	27182003

Tender text

Front and rear vented base/plinth unit for DK TS,
600 mm wide enclosure

The vented base/plinth unit consists of a front trim panel with ventilation slots and two pre-assembled corner pieces.

The base/plinth is completed by the addition of extra side trims. The base/plinth is fixed in place using the screws in the corner pieces, which are easy to reach from the outside. Optional filter mats can be attached to the ventilated trim panels in order to keep dust out. The base/plinth can be bolted directly to the floor or fixed in place using floor fixing plates.

Using baying brackets enables easy linking within enclosure suites and the side trim plates can be turned to simplify cable entry between the separate enclosures. The inside of the base/plinth provides many options for the configuration additional mounting levels

Material: Base/plinth unit, spray finished steel plate

Corner cover = plastic

Colour: RAL 7035

Base/plinth height: 100 mm

for enclosure width: 600 mm