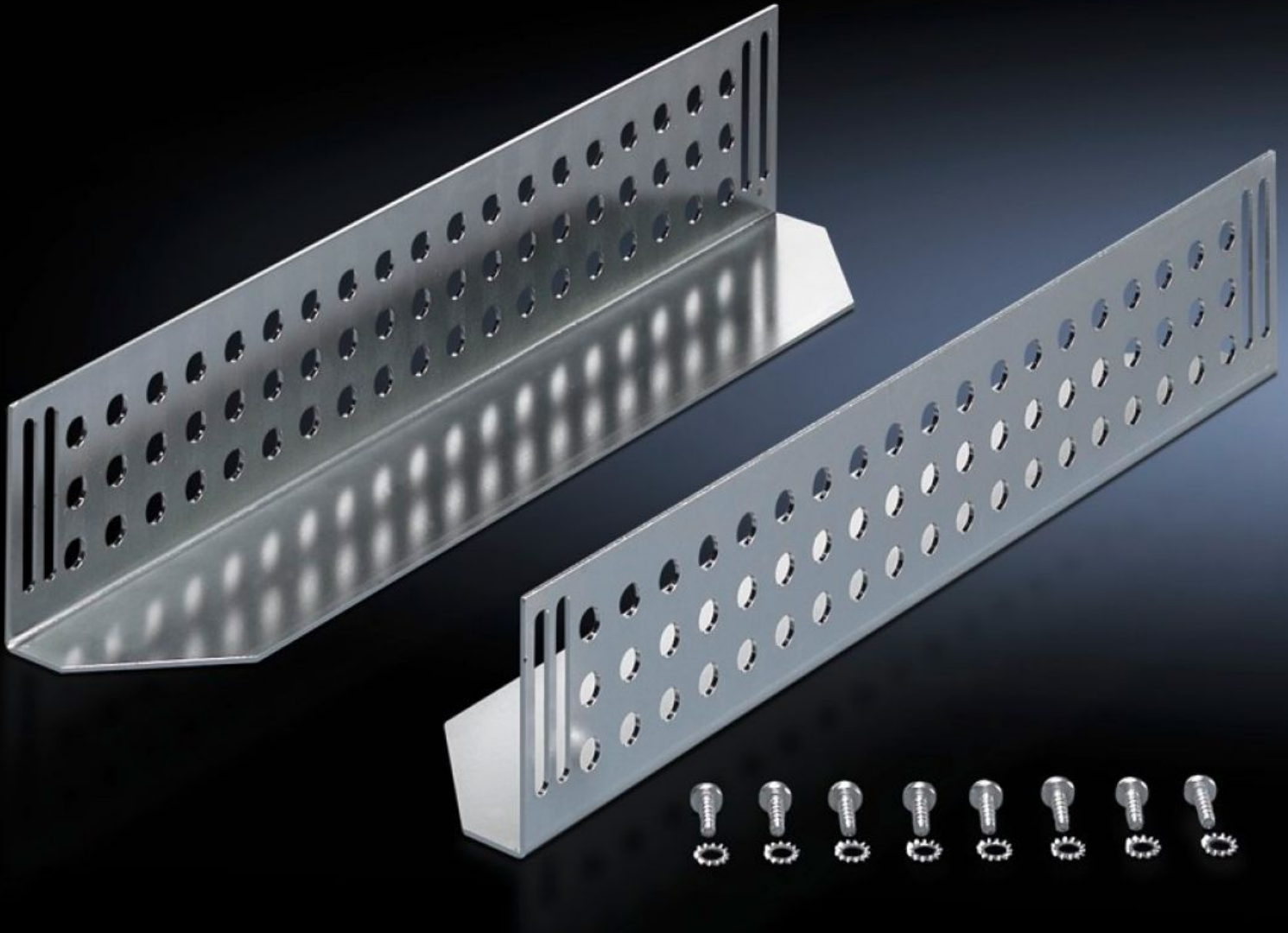


Rittal – The System.

Faster – better – everywhere.



DK 7963.610 Slide rail

State: 22/05/2026 (Source: rittal.com/com-en)

ENCLOSURES

POWER DISTRIBUTION

CLIMATE CONTROL

IT INFRASTRUCTURE

SOFTWARE & SERVICES

FRIEDHELM LOH GROUP



DK 7963.610 - Slide rail for TE

For mounting between a front and a rear pair of mounting angles, to support heavy 482.6 mm (19") components.

Features

| | |
|----------------------------------|---|
| Model No. | DK 7963.610 |
| Product description | For mounting between the front and rear 482.6 mm (19") mounting levels. The slide rails can be used to support heavy 482.6 mm (19") components. |
| Material | Sheet steel |
| Surface finish | Zinc-plated |
| Supply includes | Assembly parts |
| Distance between mounting levels | 695 mm |
| Load capacity static | 800 N |
| Contact surface | Width: 85 mm Depth: 624 mm |
| To fit | Enclosure type: TE 8000 |
| Installation dimensions | Installation depth for components: 482.6 mm Installation width for components: 19" |
| Packs of | 2 pc(s). |
| Net weight | 3.066 kg |
| Gross weight | 3.266 kg |
| Customs tariff number | 73269098 |
| ETIM 9 | EC002620 |
| ECLASS 8.0 | 27189261 |
| Product description | DK Slide rail, support surface WxD: 85x624 mm, 80 kg, static, distance between levels:: 695 mm, For TE |

Tender text

Slide rail for TE/FR(i), L = 624 mm

Material: Sheet steel, zinc-plated, passivated