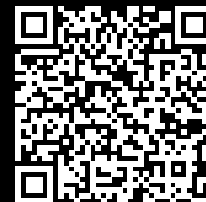


**Faster – better – everywhere.**



State: 18/05/2024 (Source: rittal.com/en)

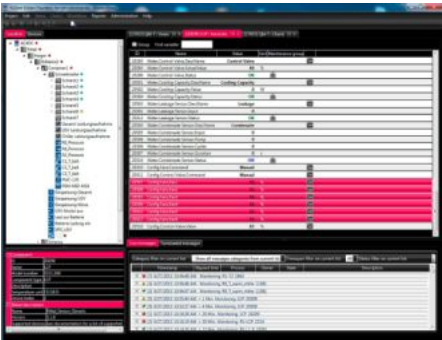


## SOFTWARE & SERVICES

FRIEDHELM LOH GROUP

# DK 7990.101 - RiZone Appliance Standard

RiZone is supplied as a software appliance.



## Features

Model No.	DK 7990.101
Design	Hardware appliance: Server with Windows
Product description	RiZone is supplied as a software appliance. The software appliance is available as a virtual server in Open Virtualization Format (OVF) which is easily used on existing hardware in the data centre.
Product modification	The RiZone appliance is supplied with Version 3.5 of RiZone. Supports the current Microsoft Server operating system 2012R2. The local database uses SQL Express 2012.
Note	RiZone supports the protocols SNMP V1/V2C and SNMP V3 for monitoring infrastructure components (OT devices) in a data centre. RiZone is manufacturer-neutral and suitable for use in a heterogeneous landscape of OT devices.
Packs of	1 pc(s).
Customs tariff number	84713000
EAN	4028177665613
ETIM 7.0	EC000501
ECLASS 8.0	19240201

## Tender text

RiZone Server Appliance, server with Windows

A management software is needed for the physical infrastructure of a data centre to monitor, or if necessary, to control the cooling, power supply/distribution and security areas.

It must include the following functions and features:

- Input of all infrastructure sensor values, busbar values and cooling values via SNMP
- Logging of warnings and alarms by means of SNMP traps
- Storage of all data in a SQL database (MSSQL or Oracle)
- Easy and quick data centre project planning by means of site trees, views, charts/diagrams
- Line, pie and Gantt charts/diagrams
- Graphics already stored for standard units
- Integration of existing data centre floorplans (jpg format)
- Standard charts are available
- Calculation Engine to be able to calculate values within the software (e.g. PUE)
- Dashboard functionality
- Monitoring the states of all components via a graphic display
- Simple preparation of charts and diagrams based on all data available
- Simple creation of automatic procedures (What happens if...)
- Control of infrastructure by writing values via SNMP
- Link to superordinate management systems via Management Pack (SCOM) or SNMP
- Simple software configuration, ideally supplied as appliance (software or hardware).  
Software appliance as VM for VMWare, Hyper-V or Xen.
- Client/server architecture, clients must operate under Windows XP/Vista/7
- Report function
- User administration with roles/rights. Exact definition "who may do what" down to a single sensor
- Scalability from a 1-rack data centre up to a large

data centre

- Modular licencing, simple re-licencing for growing data centre