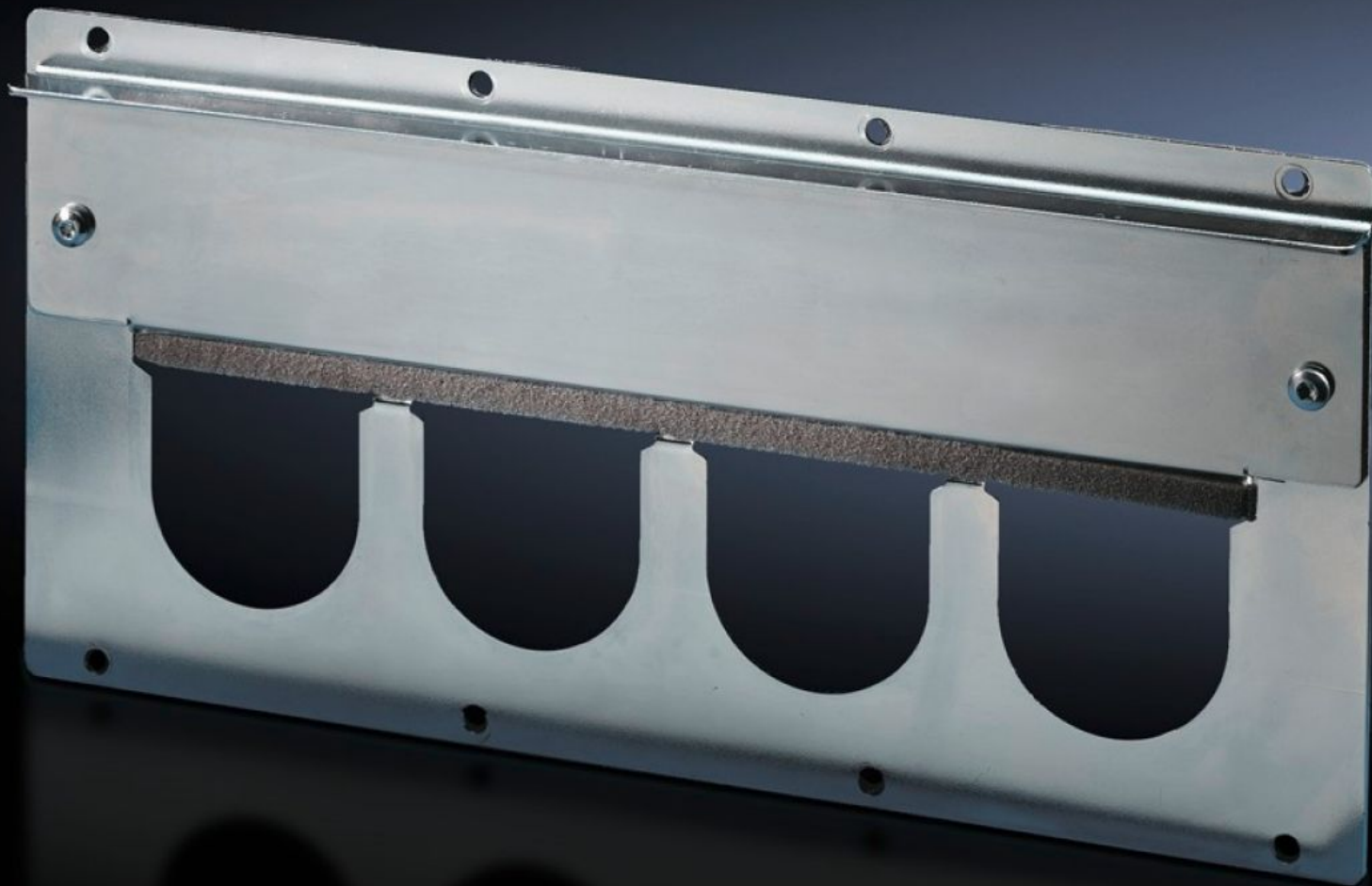
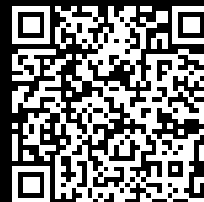


Rittal – The System.

Faster – better – everywhere.



TS 8609.190 Module plates

State: 30/05/2025 (Source: rittal.com/com-en)

ENCLOSURES

POWER DISTRIBUTION

CLIMATE CONTROL

IT INFRASTRUCTURE

SOFTWARE & SERVICES

FRIEDHELM LOH GROUP



TS 8609.190 - Module plates solid

For sealing unused cut-outs. Easily machined for individual cut-outs.

Features

Model No.	TS 8609.190
Design	For cable entry grommets: Slide the grommets into the cut-outs, slide the clamp plate with seal down over them, and screw-fasten.
Product description	For sealing unused cut-outs. Easily machined for individual cut-outs.
Material	Sheet steel, 2.0 mm
Surface finish	Zinc-plated
Supply includes	Seal included
To fit	Enclosure type: VX TS
Packs of	1 pc(s).
Net weight	1
Gross weight	1.1
Customs tariff number	73269098
EAN	4028177386310
ETIM 9	EC000211
ECLASS 8.0	27142421