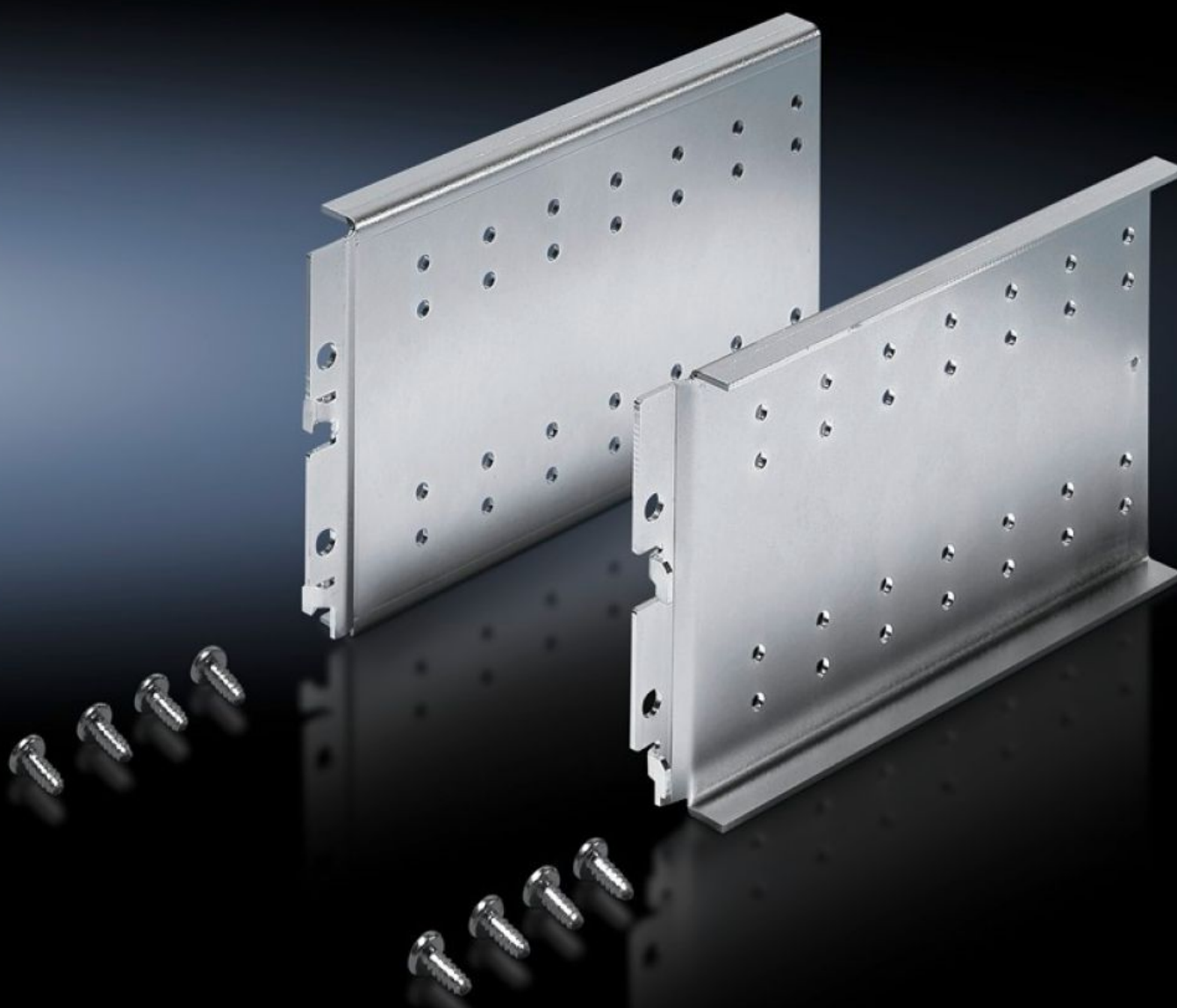
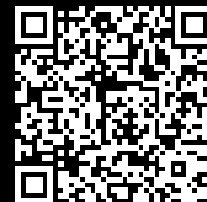


Rittal – The System.

Faster – better – everywhere.



TS 8612.200

Support rail, locatable

State: 28/06/2025 (Source: rittal.com/com-en)

ENCLOSURES

POWER DISTRIBUTION

CLIMATE CONTROL

IT INFRASTRUCTURE

SOFTWARE & SERVICES

FRIEDHELM LOH GROUP



TS 8612.200 - Support rail, locatable for TS, CM, PC, TP

To accommodate mounting plate, small, if due to mounting plate infill or similar equipment, vertical no punched sections or other assemblies can be mounted in the depth.



Features

Model No.	TS 8612.200
Product description	Suitable for: Internal mounting behind the mounting compartment, small, of the PC enclosure, mounting on the vertical TS enclosure section, mounting in CM and TP on the interior installation rail. Integral 25 mm pitch pattern of holes to accommodate: Mounting plate, small, PS punched section without mounting flange via support brackets PS as a second mounting level, if due to an installed mounting plate infill and cable duct, vertical no punched sections or other assemblies can be mounted in the depth.
Material	Sheet steel, 2.0 mm
Surface finish	Zinc-plated
Supply includes	Assembly parts
Load capacity (static)	15 kg
Packs of	1 set(s)
Net weight	0.85
Gross weight	0.926
Customs tariff number	73269098
EAN	4028177370593
ECLASS 8.0	27189261