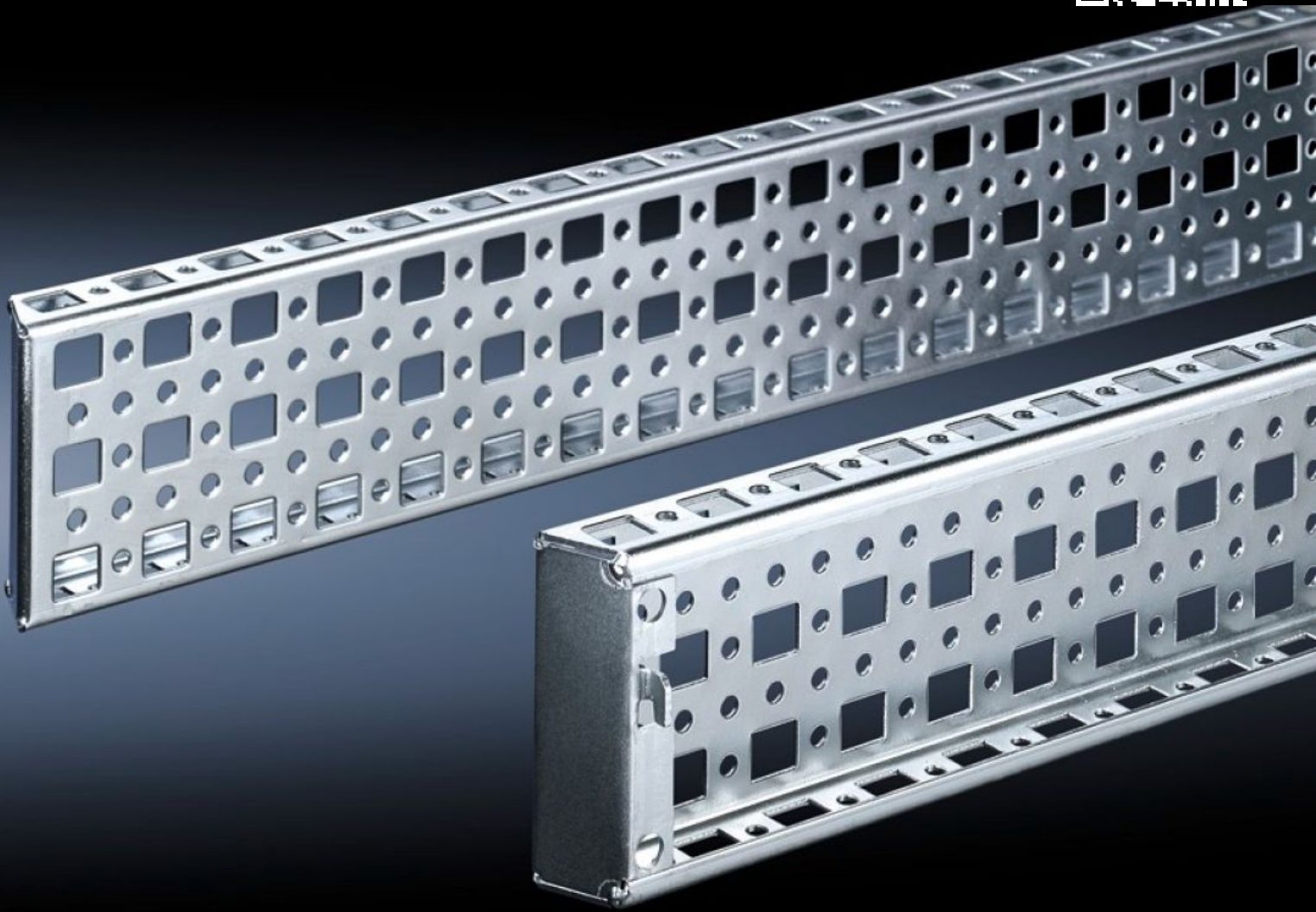


Rittal – The System.

Faster – better – everywhere.



TS 8612.500

**TS punched section with mounting
flange, 23 x 73 mm**

State: 15/05/2026 (Source: rittal.com/com-en)

ENCLOSURES

POWER DISTRIBUTION

CLIMATE CONTROL

IT INFRASTRUCTURE

SOFTWARE & SERVICES

FRIEDHELM LOH GROUP



TS 8612.500 - TS punched section with mounting flange, 23 x 73 mm

The alternative to the TS punched section with mounting flange 17 x 73 mm, with punchings for captive nuts/threaded blocks instead of the slotted holes top and bottom. Simply locate and secure.



Features

| | |
|-----------------------|---|
| Model No. | TS 8612.500 |
| Product description | The alternative to the TS punched section with mounting flange 17 x 73 mm, with punchings for captive nuts/threaded blocks instead of the slotted holes top and bottom. Simply locate and secure. |
| Material | Sheet steel |
| Surface finish | Zinc-plated |
| Supply includes | Assembly screws |
| Installation options | On the vertical TS, VX SE enclosure section |
| To fit | Enclosure type: the inner mounting level Width/depth: 1,000 mm |
| Packs of | 4 pc(s). |
| Net weight | 4.264 kg |
| Gross weight | 4.463 kg |
| Customs tariff number | 73269098 |
| ETIM 9 | EC002625 |
| ECLASS 8.0 | 27189234 |

Features

Product description

TS punched section with mounting flange, 23 x 73 mm, for inner mounting level: W/D: 1000 mm