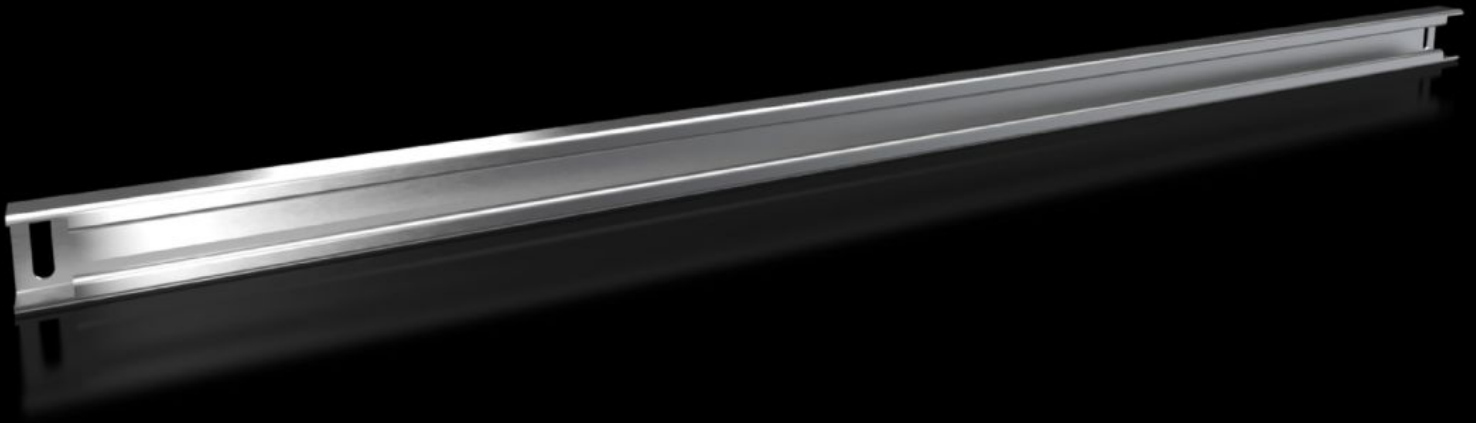
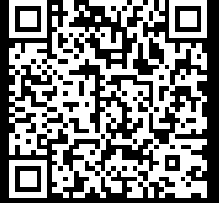


Rittal – The System.

Faster – better – everywhere.



VX 8617.830

Support rail 48 x 26 mm

State: 13/05/2026 (Source: rittal.com/com-en)

ENCLOSURES

POWER DISTRIBUTION

CLIMATE CONTROL

IT INFRASTRUCTURE

SOFTWARE & SERVICES

FRIEDHELM LOH GROUP



VX 8617.830 - Support rail 48 x 26 mm for VX, VX SE, PC, IW, AX

For heavy installed equipment such as transformers. T-head screw and slots in the support rail accommodate all mounting dimensions.



Features

| | |
|----------------------------|--|
| Model No. | VX 8617.830 |
| Product description | |
| Material | Sheet steel |
| Surface finish | Zinc-plated |
| Supply includes | Assembly parts |
| VX installation options | In enclosure width 1200 mm, on the inner mounting level and in the base |
| VX SE installation options | In enclosure width 1200 mm, on the inner mounting level, in conjunction with adaptor rail for VX compatibility and in the base |
| AX installation options | In enclosure width 1200 mm, in conjunction with the AX interior installation rail and AX base configuration rail |
| PC installation options | In enclosure width 1200 mm, on the inner mounting level, in conjunction with adaptor rail for VX compatibility and in the base |
| WI installation options | In enclosure width 1200 mm, on the inner mounting level, in conjunction with adaptor rail for VX compatibility and in the base |

Features

| | |
|-----------------------|---|
| To fit | Enclosure type: VX VX SE PC IW AX CX one-piece console CX pedestal Width: = 1,200 mm |
| Packs of | 2 pc(s). |
| Net weight | 5.6 kg |
| Gross weight | 5.95 kg |
| Customs tariff number | 73269098 |
| ETIM 9 | EC001285 |
| ECLASS 8.0 | 27189261 |
| Product description | VX Support rail 48 x 26 mm, for W: 1200 mm |

Approvals

| | |
|--------------|-----------------|
| Explanations | PCF-declaration |
|--------------|-----------------|