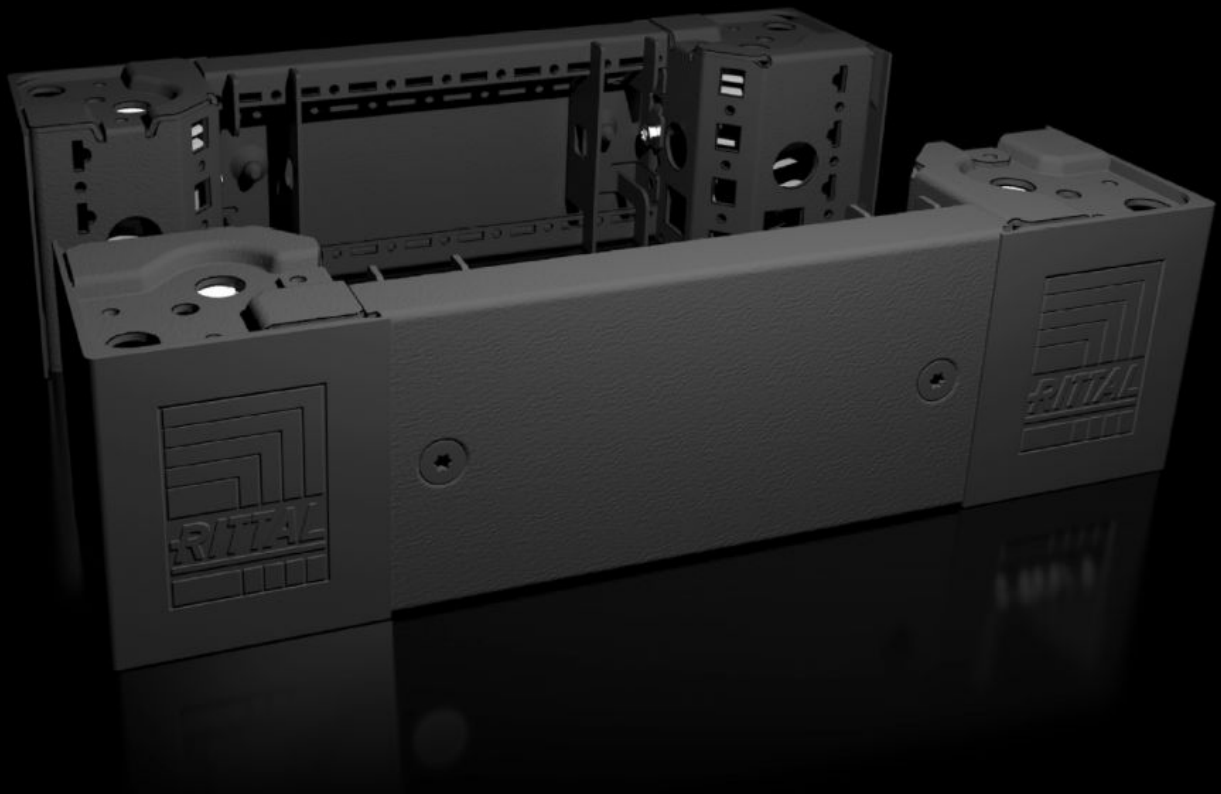


Rittal – The System.

Faster – better – everywhere.



VX 8640.001

**Base/plinth corner piece with base/
plinth trim panels, front and rear,
100 mm**

State: 14/05/2026 (Source: rittal.com/com-en)

ENCLOSURES

POWER DISTRIBUTION

CLIMATE CONTROL

IT INFRASTRUCTURE

SOFTWARE & SERVICES

FRIEDHELM LOH GROUP



VX 8640.001 - Base/plinth corner piece with base/plinth trim panels, front and rear, 100 mm for VX, VX IT, VX SE, TE, TS, TS IT, TP, PC, IW

Heavy-duty base/plinth corner pieces with moulded self-positioning to the enclosure, may be used with or without trim panels depending on the application. Large openings in the base/plinth corner piece for optimum access to the screw-fastening point, may be concealed with a plastic corner and baying cover.

Features

| | |
|---------------------|---|
| Model No. | VX 8640.001 |
| Product description | High-load capacity base/plinth corner pieces with moulded self-positioning to the enclosure, may be used with or without trim panels depending on the application. Large openings in the base/plinth corner piece for optimum access to the screw-fastening point, may be concealed with a plastic corner and baying cover. |
| Material | Base/plinth corner piece: Sheet steel Base/plinth trim panel front/rear: Sheet steel Corner and baying cover: Plastic |
| Colour | RAL 9005 |
| Supply includes | 4 base/plinth corner pieces, 100 mm high 4 corner covers 1 baying cover 2 base/plinth trim panels, front/rear, 100 mm high Assembly parts |
| Note | Side base/plinth trim panels finish off a base/plinth unit or provide additional stabilisation between base/plinths or enable interior configuration of the base/plinth |
| Dimensions | Height: 100 mm |

Features

| | |
|-----------------------|---|
| To fit | Enclosure type: VX VX IT VX SE TS IT TX CableNet Width: = 400 mm |
| Type rating to UL 50E | Type 1 Type 12 |
| Weight/pack | 3.67 kg |
| Packs of | 2 pc(s). |
| Net weight | 3.6 kg |
| Customs tariff number | 94039910 |
| ETIM 9 | EC000721 |
| ETIM 8 | EC000721 |
| ECLASS 8.0 | 27182003 |
| Product description | VX Base/plinth corner piece, with base/plinth trim panel, front and rear, H: 100 mm, for W: 400 mm, sheet steel |

Approvals

| | |
|-----------|------------------|
| Approvals | UL + C-UL - FTTA |
|-----------|------------------|