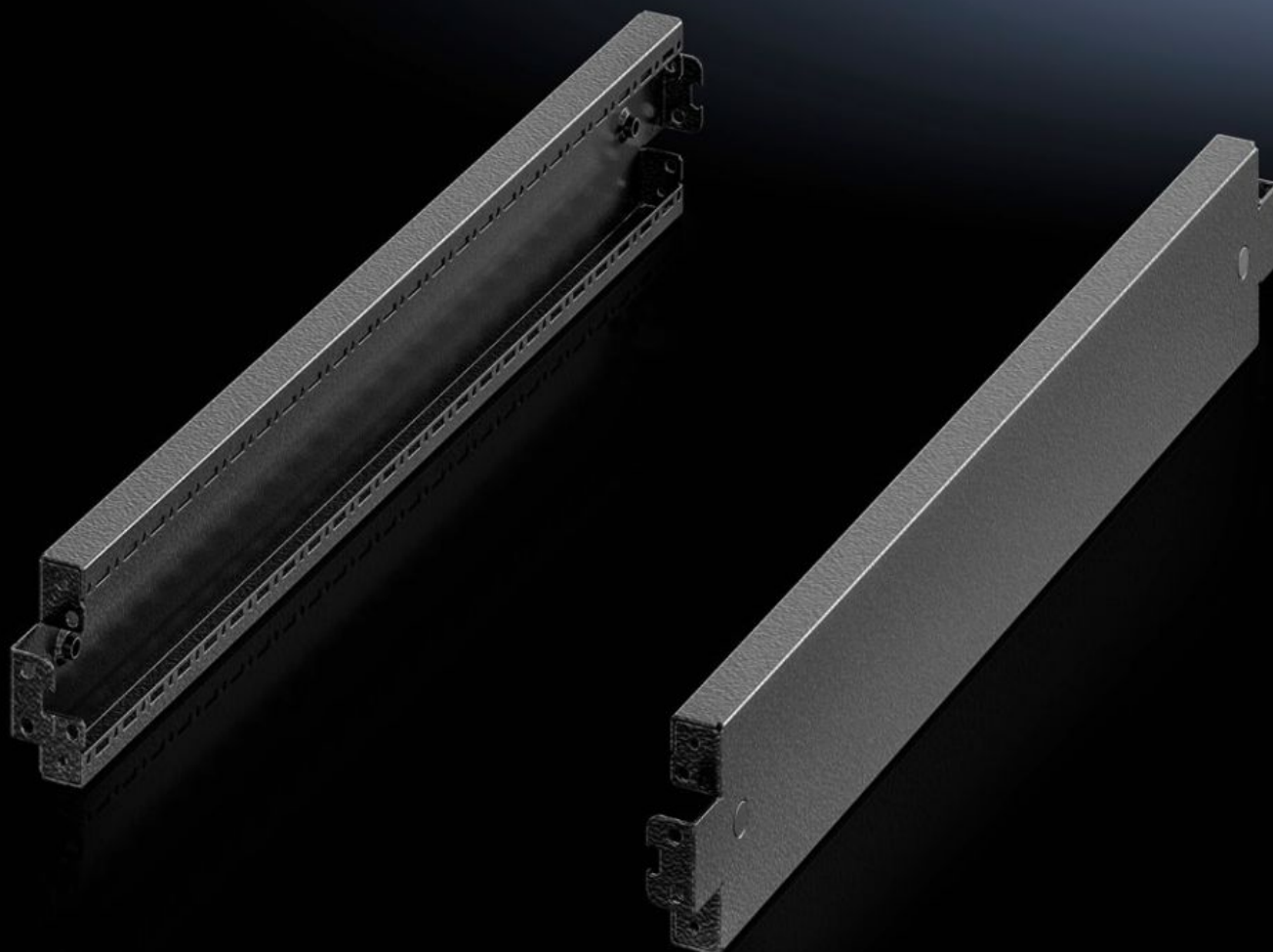


Rittal – The System.

Faster – better – everywhere.



VX 8640.036

Base/plinth trim panels, side, 100 mm

State: 27/07/2025 (Source: rittal.com/com-en)

ENCLOSURES

POWER DISTRIBUTION

CLIMATE CONTROL

IT INFRASTRUCTURE

SOFTWARE & SERVICES

FRIEDHELM LOH GROUP



VX 8640.036 - Base/plinth trim panels, side, 100 mm for base/plinth system VX, sheet steel

To finish off a base/plinth unit at the sides and for additional stability, or for the interior installation of bayed base/plinths. One 200 mm high or two 100 mm high trim panels may optionally be fitted on 200 mm high base/plinths.



Features

| | |
|-----------------------|--|
| Model No. | VX 8640.036 |
| Product description | To finish off a base/plinth unit at the sides and for additional stability, or for the interior installation of bayed base/plinths. One 200 mm high or two 100 mm high trim panels may optionally be fitted on 200 mm high base/plinths. |
| Material | Sheet steel |
| Colour | RAL 9005 |
| Supply includes | Assembly parts |
| Dimensions | Height: 100 mm |
| To fit | Depth: = 1,200 mm |
| Type rating to UL 50E | Type 1, 12 |
| Weight/pack | 4.12 kg |
| Packs of | 2 pc(s). |
| Net weight | 3.7 |
| Gross weight | 3.94 |
| Customs tariff number | 94039910 |
| EAN | 4028177958982 |

Features

| | |
|-----------------|----------|
| E-Number Sweden | E3465382 |
| ETIM 9 | EC000721 |
| ECLASS 8.0 | 27182003 |

Approvals

| | |
|-----------|------------------|
| Approvals | UL + C-UL - FTTA |
|-----------|------------------|