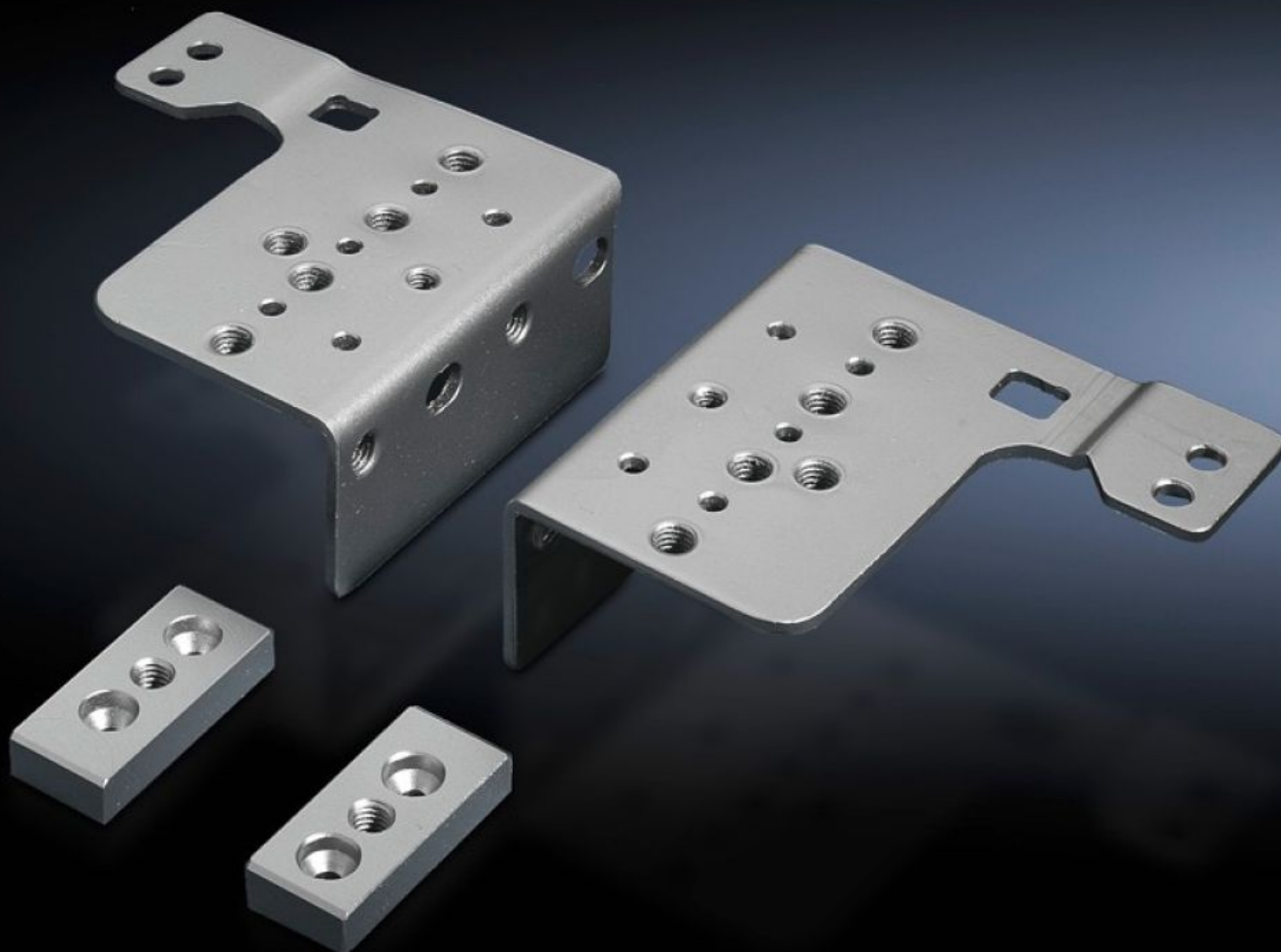
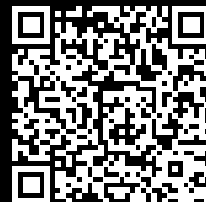


# Rittal – The System.

Faster – better – everywhere.



## TS 8800.200 Width divider

State: 01/05/2024 (Source: [rittal.com/com-en](http://rittal.com/com-en))

ENCLOSURES

POWER DISTRIBUTION

CLIMATE CONTROL

IT INFRASTRUCTURE

SOFTWARE & SERVICES

FRIEDHELM LOH GROUP



# TS 8800.200 - Width divider

Width divider, divides 1200 mm wide TS and SE enclosures into two halves in the base assembly, to facilitate two different installations.



## Features

Model No.	TS 8800.200
Product description	Divides 1200 mm wide TS or SE enclosures into two halves.
Material	Sheet steel
Surface finish	Zinc-plated
Supply includes	1 bracket for right 1 bracket for left 2 compensation plates for the top Assembly parts

# Features

Installation options	<p>Two mounting plates side by side: Two mounting plates (from 600 mm wide enclosures) in a 1200 mm wide enclosure permit independent positioning and easy handling. 4 punched rails 18 x 38 mm at the bottom, according to the enclosure depth, and 1 TS punched section without mounting flange 23 x 73 mm at the top, according to the enclosure depth, are required for this installation</p> <p>System support rails, fitted on the left: Heavy installed equipment rests on the system support rails, leaving the remaining floor space free, e.g. for unhindered cable entry. 2 system support rails and 1 TS punched rail 18 x 38 mm, according to the enclosure depth, are required for this installation</p> <p>Cable clamp rail, installed on the left: With 1200 mm wide enclosures, the width divider allows cable entry and cable clamping to be arranged differently on the left and right of the enclosure. 1 cable clamp rail and 1 TS punched rail 18 x 38 mm, according to the enclosure depth, are required for this installation</p>
Assembly instruction	The accessories additionally required will depend on the described installation situations
Packs of	1 pc(s).
Weight/pack	0.74 kg
Customs tariff number	73269098
EAN	4028177212565
ETIM 7.0	EC002620
ECLASS 8.0	27189261