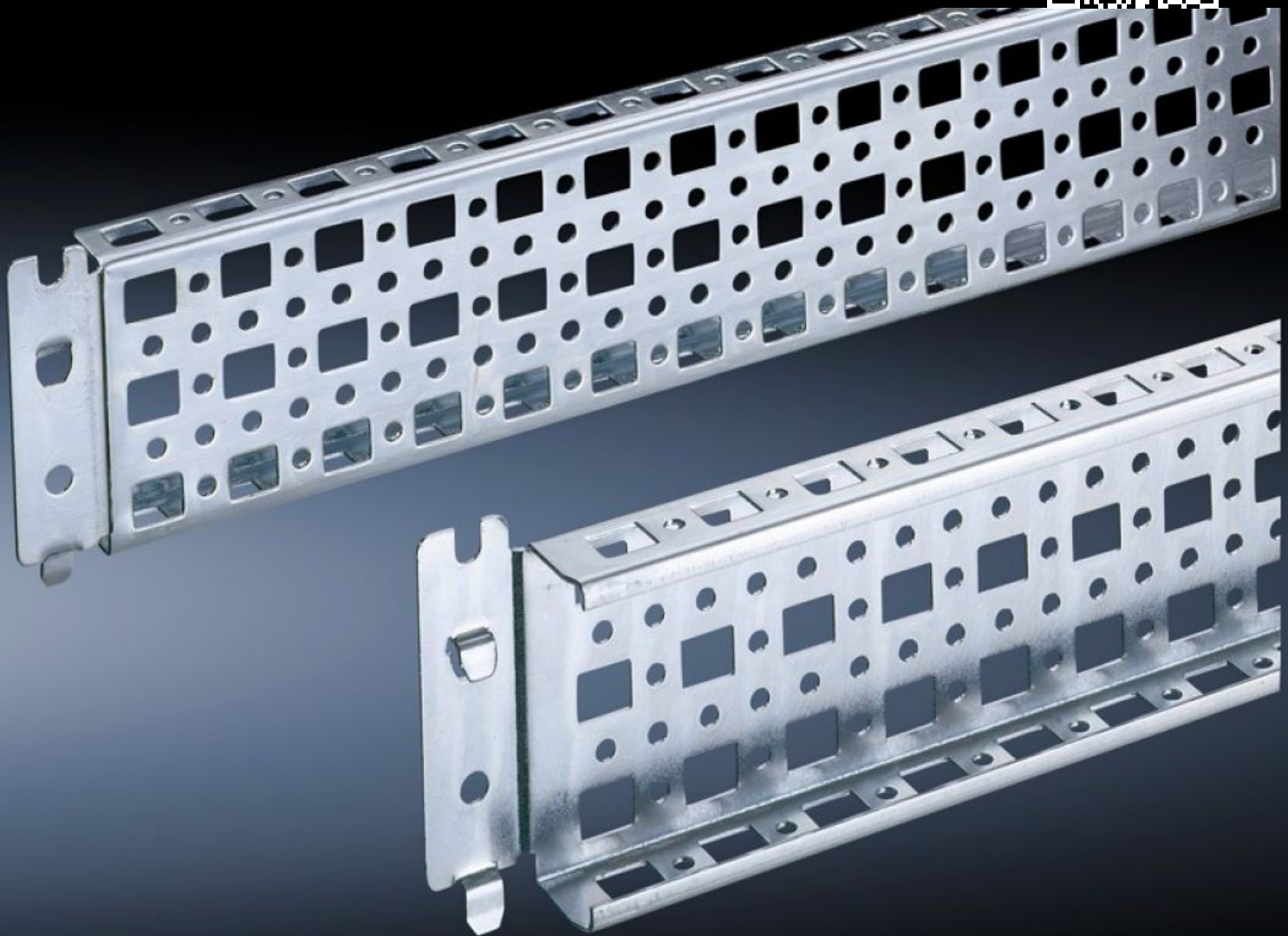


Rittal – The System.

Faster – better – everywhere.



SZ 8800.640

**PS punched section with mounting
flange 23 x 73 mm**

State: 15/05/2026 (Source: rittal.com/com-en)

ENCLOSURES

POWER DISTRIBUTION

CLIMATE CONTROL

IT INFRASTRUCTURE

SOFTWARE & SERVICES

FRIEDHELM LOH GROUP



SZ 8800.640 - PS punched section with mounting flange 23 x 73 mm for TS, VX SE

For direct mounting on the horizontal enclosure sections of a TS. Only suitable for mounting to the vertical enclosure sections in conjunction with an adaptor. Simply locate into the TS punchings and secure.



Features

Model No.	SZ 8800.640
Product description	Variable, with 5 rows of holes for universal skeleton structures or partial assembly. Simply locate into the system punchings and secure.
Material	Sheet steel
Surface finish	Zinc-plated
Supply includes	Assembly screws
Installation options	On the vertical TS, VX SE enclosure section via adaptor rails for VX compatibility On the horizontal TS enclosure section On the horizontal VX SE enclosure section, bottom On the horizontal VX SE enclosure section, top in the width
To fit	Enclosure type: TS VX SE Width/depth: 400 mm
Packs of	4 pc(s).
Net weight	1.4 kg
Gross weight	1.661 kg

Features

Customs tariff number	73269098
ETIM 9	EC002625
ECLASS 8.0	27189234
Product description	TS punched section with mounting flange, 23 x 73 mm, for TS, SE, for W/D: 400 mm
