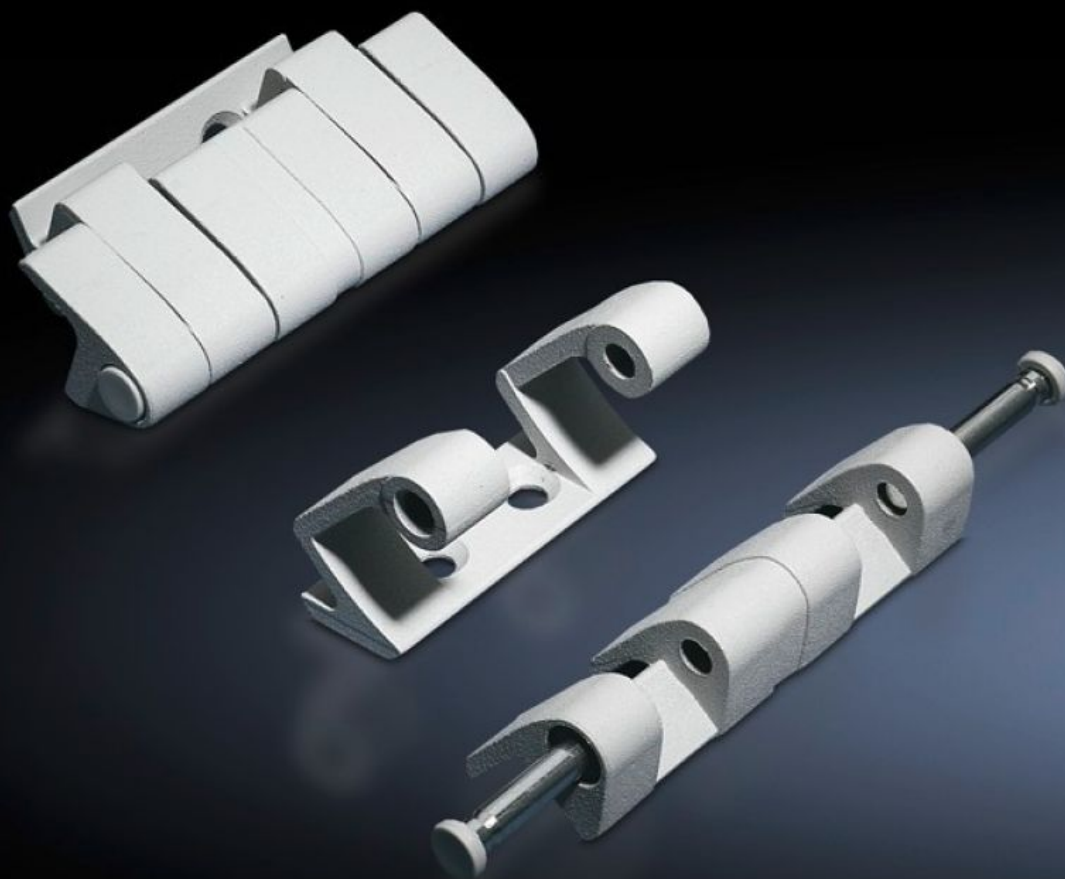
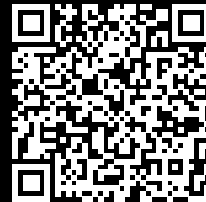


Rittal – The System.

Faster – better – everywhere.



SZ 8800.710 180° hinge

State: 08/02/2026 (Source: rittal.com/com-en)

ENCLOSURES

POWER DISTRIBUTION

CLIMATE CONTROL

IT INFRASTRUCTURE

SOFTWARE & SERVICES

FRIEDHELM LOH GROUP



SZ 8800.710 - 180° hinge

To extend the door opening angle to 180°

Features

| | |
|---------------------------|--|
| Model No. | SZ 8800.710 |
| Material | Precision casting/die-cast zinc |
| Colour | RAL 7035 |
| Supply includes | Assembly parts |
| Door opening angle | 180° |
| Note | The protection category of the enclosure may be reduced. The doors must be hinged on the same side when enclosures are bayed. |
| Suitable for door variant | Doors with high dynamic loads, door installations up to 900 N |
| To fit enclosure type | TS VX SE |
| Packs of | 4 pc(s). |
| Net weight | 0.92 |
| Gross weight | 0.977 |
| Customs tariff number | 83021000 |
| EAN | 4028177595064 |
| ETIM 9 | EC001167 |
| ECLASS 8.0 | 27409219 |