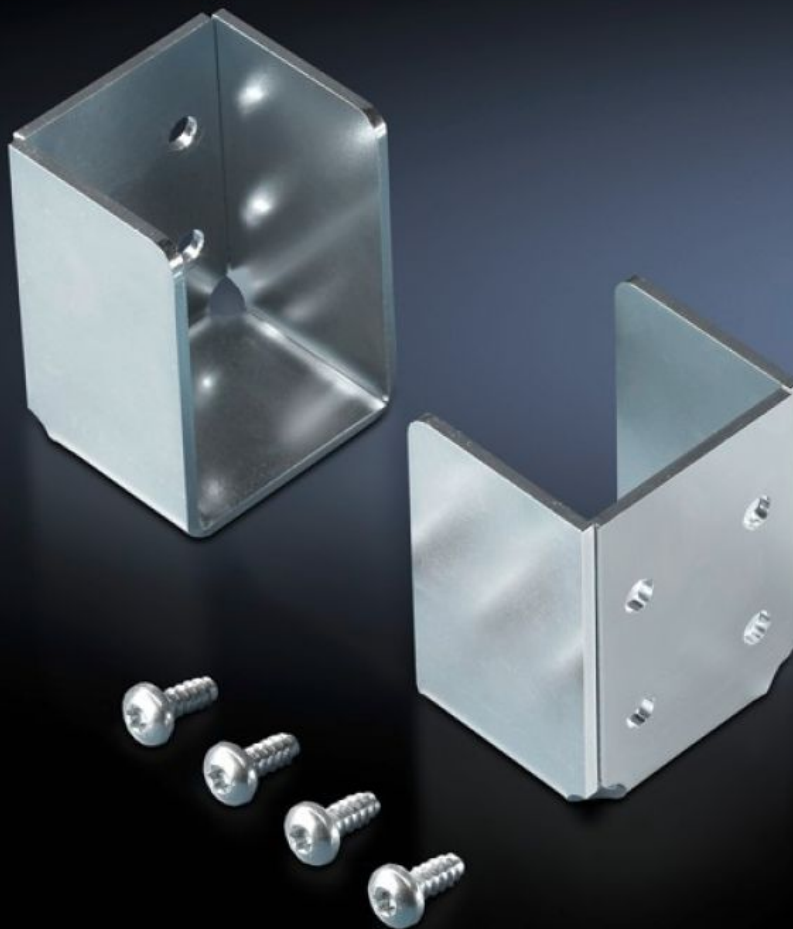


Rittal – The System.

Faster – better – everywhere.



TS 8801.000 Holder

State: 24/08/2025 (Source: rittal.com/com-en)

ENCLOSURES

POWER DISTRIBUTION

CLIMATE CONTROL

IT INFRASTRUCTURE

SOFTWARE & SERVICES

FRIEDHELM LOH GROUP



TS 8801.000 - Holder for protective bars

For mounting on the vertical section. The protective bar is simply inserted.

Features

Model No.	TS 8801.000
Product description	For mounting on the vertical section. The protective bar is simply inserted.
Material	Sheet steel
Surface finish	Zinc-plated
Supply includes	Assembly parts
Packs of	2 pc(s).
Net weight	0.35
Gross weight	0.368
PCF per pack (cradle-to-gate)	1.7 kg CO2 eq (Cat B)
Note on PCF category	Category B: PCF value (cradle-to-gate) based on the product weight, approximately calculated and self-declared
Customs tariff number	83024900
EAN	4028177516977
ETIM 9	EC002620
ECLASS 8.0	27189261