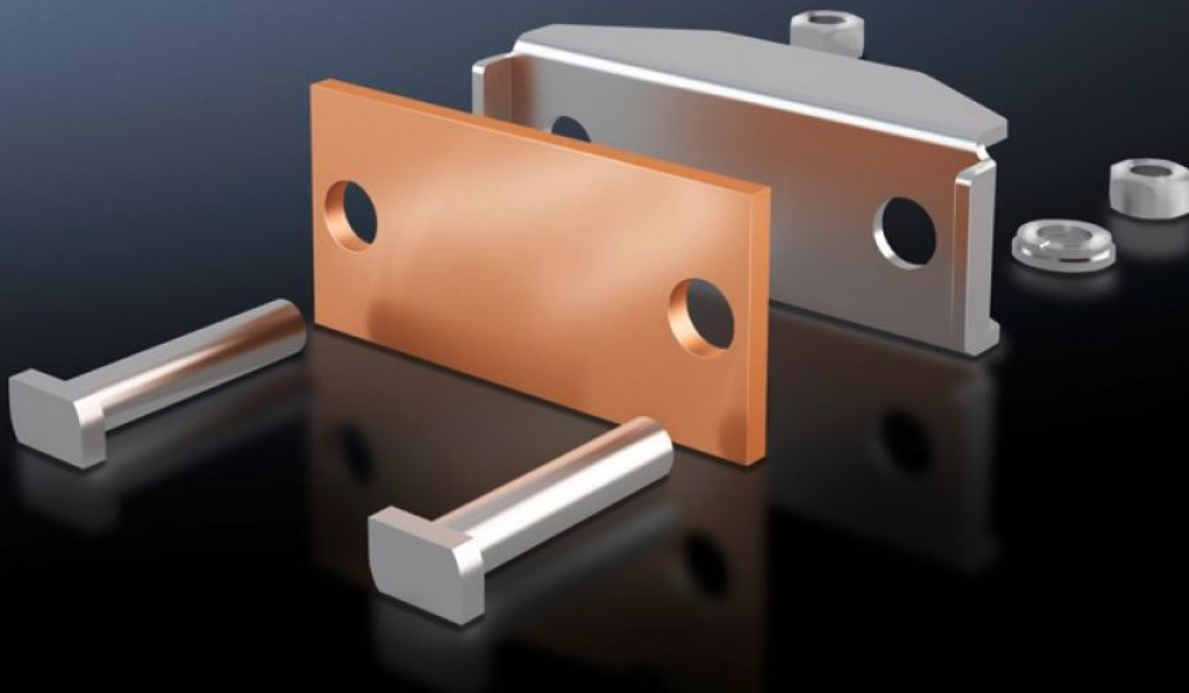
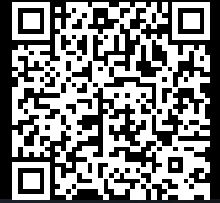


**Rittal – The System.**

Faster – better – everywhere.



# SV 9640.330 Connection plate

State: 06/04/2026 (Source: [rittal.com/com-en](http://rittal.com/com-en))

ENCLOSURES

POWER DISTRIBUTION

CLIMATE CONTROL

IT INFRASTRUCTURE

SOFTWARE & SERVICES

FRIEDHELM LOH GROUP



# SV 9640.330 - Connection plate for laminated copper bars

For the connection of laminated flat copper bars.

## Features

Model No.	SV 9640.330
Product description	For the connection of laminated flat copper bars.
Material	Connection plate: E-Cu Thrust piece: Stainless steel
Supply includes	Assembly parts
To fit busbars	Maxi-PLS 45 S/45
Clamping area for laminated copper bars (W x H)	32 x 20 mm
Packs of	3 pc(s).
Net weight	0.9 kg
Gross weight	1.073 kg
Copper weight (kg per piece)	0.13
Customs tariff number	73269098
ETIM 9	EC002498
ECLASS 8.0	27379201
Product description	SV Connection plate, clamping area WH: 32x20 mm, (Maxi-PLS 1600/2000)

## Approvals

Approvals	UL + C-UL (listed)
Explanations	Declaration of conformity Declaration of conformity UK