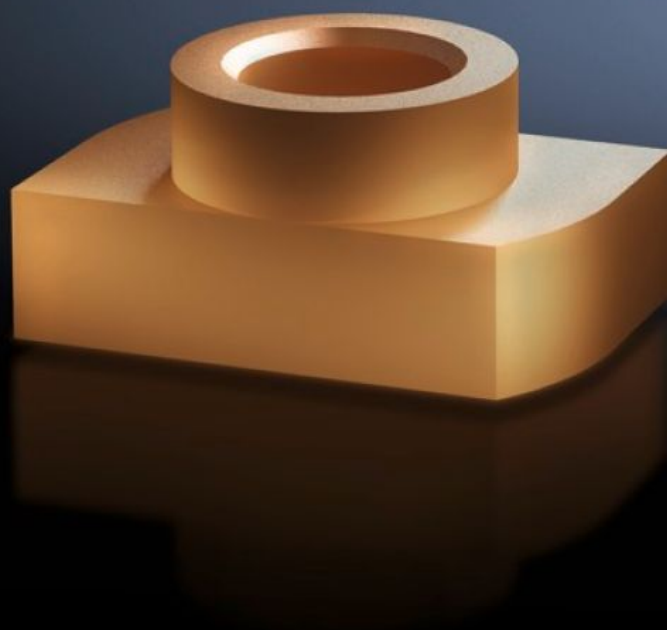


# Rittal – The System.

Faster – better – everywhere.



## SV 9650.910

## Sliding nut

State: 08/09/2025 (Source: [rittal.com/com-en](https://rittal.com/com-en))

ENCLOSURES

POWER DISTRIBUTION

CLIMATE CONTROL

IT INFRASTRUCTURE

SOFTWARE & SERVICES

FRIEDHELM LOH GROUP



# SV 9650.910 - Sliding nut for Maxi-PLS busbars

May be retro-fitted by sliding into the Maxi-PLS busbar section.

## Features

Model No.	SV 9650.910
Product description	For attaching flat copper bars and connection components to Maxi-PLS busbars. For sliding into the busbar section retrospectively and tightening the threaded bolts.
Material	E-Cu
To fit busbars	Maxi-PLS 60
Dimensions	Thread: M10
Packs of	15 pc(s).
Net weight	0.285
Gross weight	0.303
Copper weight (kg per piece)	0.02
Customs tariff number	74198090
EAN	4028177239692
ETIM 9	EC000096
ECLASS 8.0	23110804

## Approvals

Approvals	UL + C-UL (listed)
-----------	--------------------