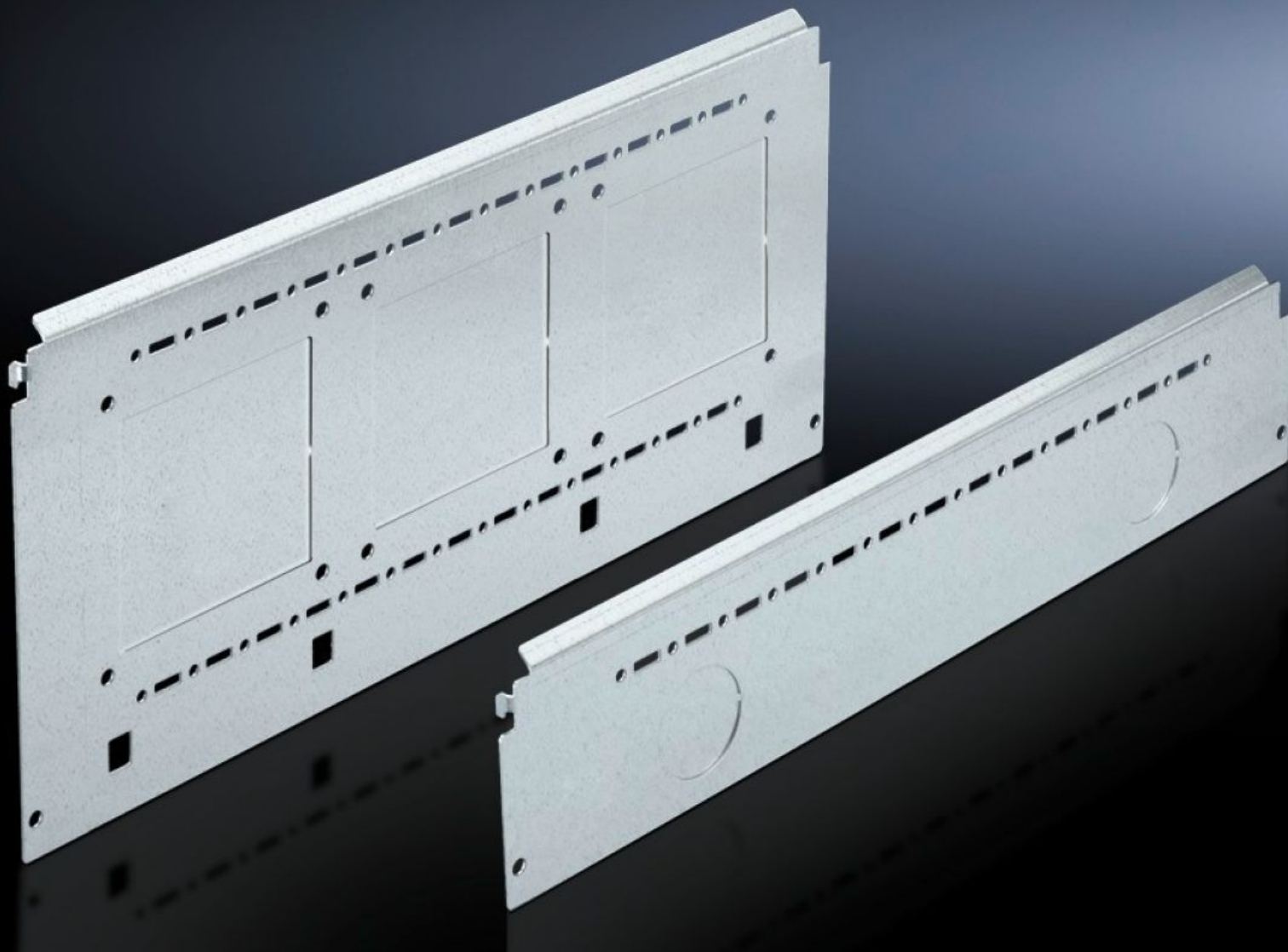
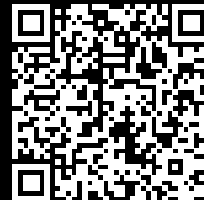


# Rittal – The System.

Faster – better – everywhere.



## SV 9673.046

## Compartment side panel module

State: 03/08/2025 (Source: [rittal.com/com-en](http://rittal.com/com-en))

ENCLOSURES

POWER DISTRIBUTION

CLIMATE CONTROL

IT INFRASTRUCTURE

SOFTWARE & SERVICES

FRIEDHELM LOH GROUP



# SV 9673.046 - Compartment side panel module for internal compartmentalisation

Side divider panel for compartments, for locating into the TS pitch pattern.



## Features

|                       |   |
|-----------------------|---|
| Model No.             | SV 9673.046   |
| Product description   | Side divider panel for compartments, for locating into the TS pitch pattern. Prepared for the location of mounting brackets for horizontal compartment dividers or mounting plates. Two TS system punchings allow the use of additional TS accessories. The side panel modules for reduced compartment depth and an auxiliary construction using TS punched rails 17 x 17 mm can be used to provide a separate enclosure space in the side panel area, e.g. for the provision of a busbar system. |
| Material              | Sheet steel, 1.5 mm   |
| Surface finish        | Zinc-plated   |
| Supply includes       | Assembly parts  |
| For compartment depth | 400 mm  |
| Dimensions            | Height: 600 mm  |
| Packs of              | 2 pc(s).  |
| Net weight            | 4.76  |
| Customs tariff number | 73269098  |
| EAN                   | 4028177704763   |
| ETIM 9                | EC002525  |

# Features

ECLASS 8.0

27400613