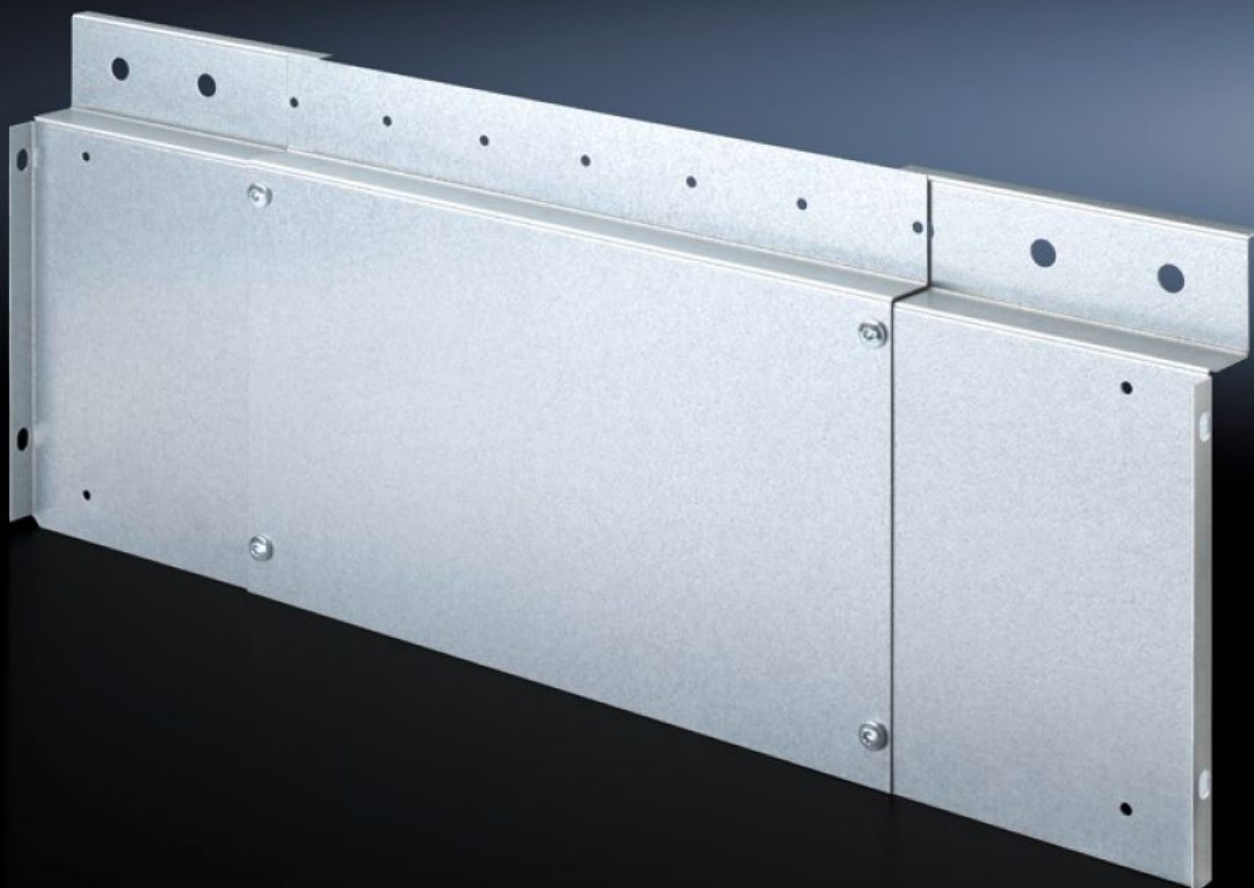
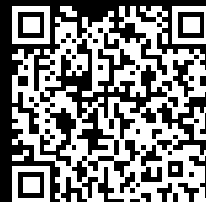


Rittal – The System.

Faster – better – everywhere.



SV 9674.550

Wiring trim panel

State: 30/06/2025 (Source: rittal.com/com-en)

ENCLOSURES

POWER DISTRIBUTION

CLIMATE CONTROL

IT INFRASTRUCTURE

SOFTWARE & SERVICES

FRIEDHELM LOH GROUP



SV 9674.550 - Wiring trim panel

Wiring system for Ri4Power with internal compartmentalisation

Features

| | |
|-----------------------|--|
| Model No. | SV 9674.550 |
| Product description | Inner front cover of the main busbar system with the option of mounting a wiring channel W x D 40 x 20 mm. Suitable for use in Ri4Power switchgear with 300 mm high front trim panels. Horizontal cable routing occurs behind the front trim panels. |
| Material | Sheet steel |
| Surface finish | Zinc-plated |
| Supply includes | Assembly parts |
| Note | For vertical cable routing, mounting brackets for compartment dividers and circuit-breaker support rails enable the installation of a wiring channel, thanks to pre-punched cut-outs. |
| To fit | Width: = 400 mm = 600 mm |
| Packs of | 1 pc(s). |
| Net weight | 1.2 |
| Gross weight | 1.279 |
| Customs tariff number | 73269098 |
| EAN | 4028177697300 |
| ETIM 9 | EC002617 |
| ECLASS 8.0 | 27142423 |