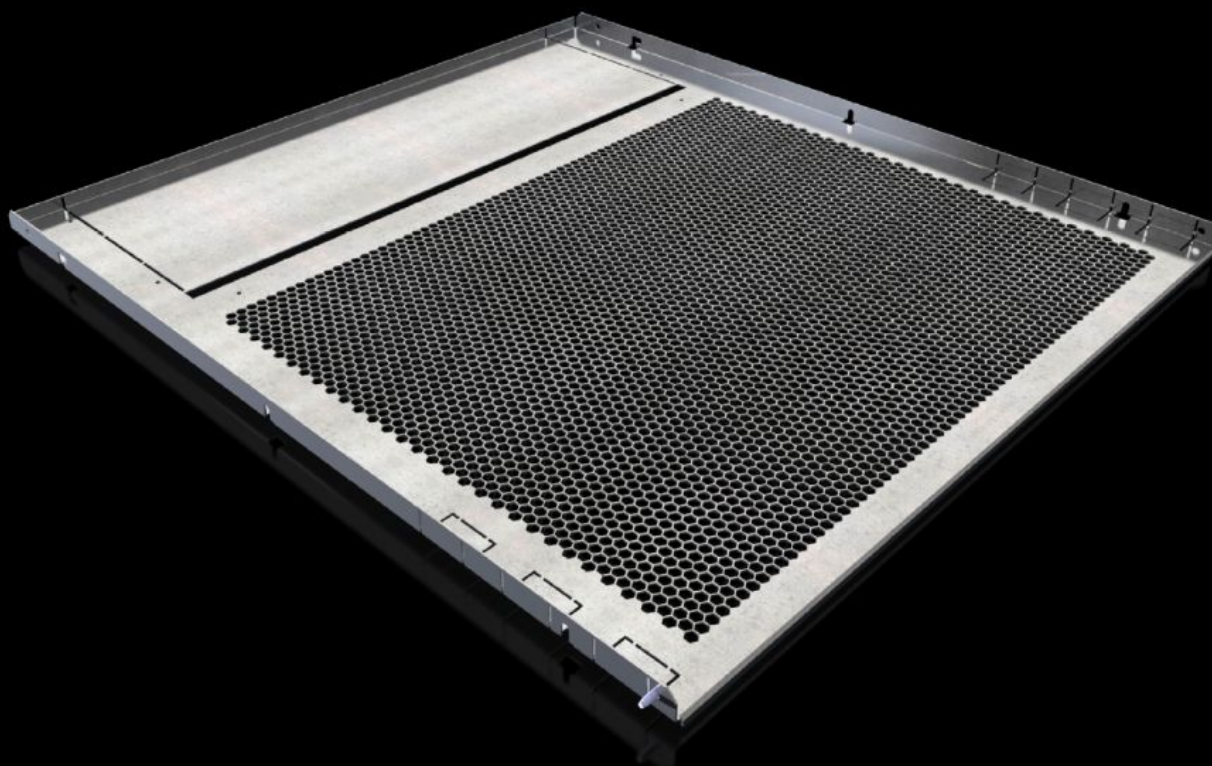
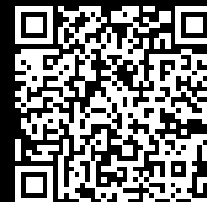


Rittal – The System.

Faster – better – everywhere.



SV 9683.488 Compartment divider

State: 02/09/2025 (Source: rittal.com/com-en)

ENCLOSURES

POWER DISTRIBUTION

CLIMATE CONTROL

IT INFRASTRUCTURE

SOFTWARE & SERVICES

FRIEDHELM LOH GROUP



SV 9683.488 - Compartment divider for VX

For the horizontal separation of compartments.

Features

Model No.	SV 9683.488
Design	With louvres
Product description	For the horizontal separation of compartments. In combination with the side panels, this creates Form separation to Form 1 to 4. For attachment to the compartment side panel or the enclosure section. The integral cut-outs with pre-punched knock-out option are used for the vertical routing of control lines or cable ducts and for the routing of distribution busbars or connection kits.
Material	Sheet steel, 1.5 mm
Surface finish	Zinc-plated
Supply includes	Assembly parts
Assembly instruction	For assembling compartments as internal Form separation, compartment side panels are required
Dimensions	Width: 711 mm Depth: 780 mm
To fit	Width: = 800 mm Depth: = 800 mm
Packs of	2 pc(s).
Net weight	8.5
Gross weight	9.12
PCF per pack (cradle-to-gate)	35.1 kg CO2 eq (Cat B)
Note on PCF category	Category B: PCF value (cradle-to-gate) based on the product weight, approximately calculated and self-declared
Customs tariff number	73269098
EAN	4028177936348
ETIM 9	EC002525

Features

ECLASS 8.0	27400613
------------	----------

Approvals

Approvals	Lloyds Register of Shipping
Explanations	Declaration of conformity UK