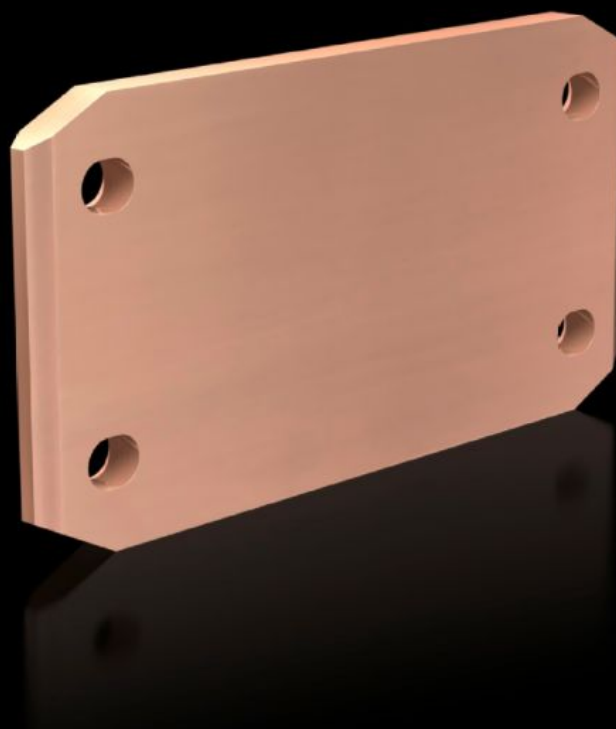
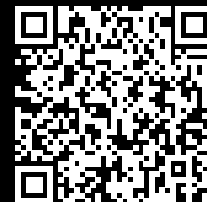


Rittal – The System.

Faster – better – everywhere.



SV 9686.250

Longitudinal connector E-Cu

State: 27/08/2025 (Source: rittal.com/com-en)

ENCLOSURES

POWER DISTRIBUTION

CLIMATE CONTROL

IT INFRASTRUCTURE

SOFTWARE & SERVICES

FRIEDHELM LOH GROUP



SV 9686.250 - Longitudinal connector E-Cu for busbar baying

For connecting a main busbar system from enclosure to enclosure.

Features

Model No.	SV 9686.250
Design	for main busbar 50 x 10 mm
Product description	For connecting the main busbar system from enclosure to enclosure.
Material	E-Cu
Supply includes	Assembly parts
Length	199 mm
Number of bars per conductor	2 4
Cross-section	100 mm x 10 mm
Packs of	1 pc(s).
Net weight	1.72
Gross weight	1.92
Copper weight (kg per piece)	1.66
Customs tariff number	74198090
EAN	4028177936119
ETIM 9	EC002270
ECLASS 8.0	27400613

Approvals

Approvals

Approvals

DNV-GL
Lloyds Register of Shipping
UL + C-UL (listed)

Explanations

Declaration of conformity UK