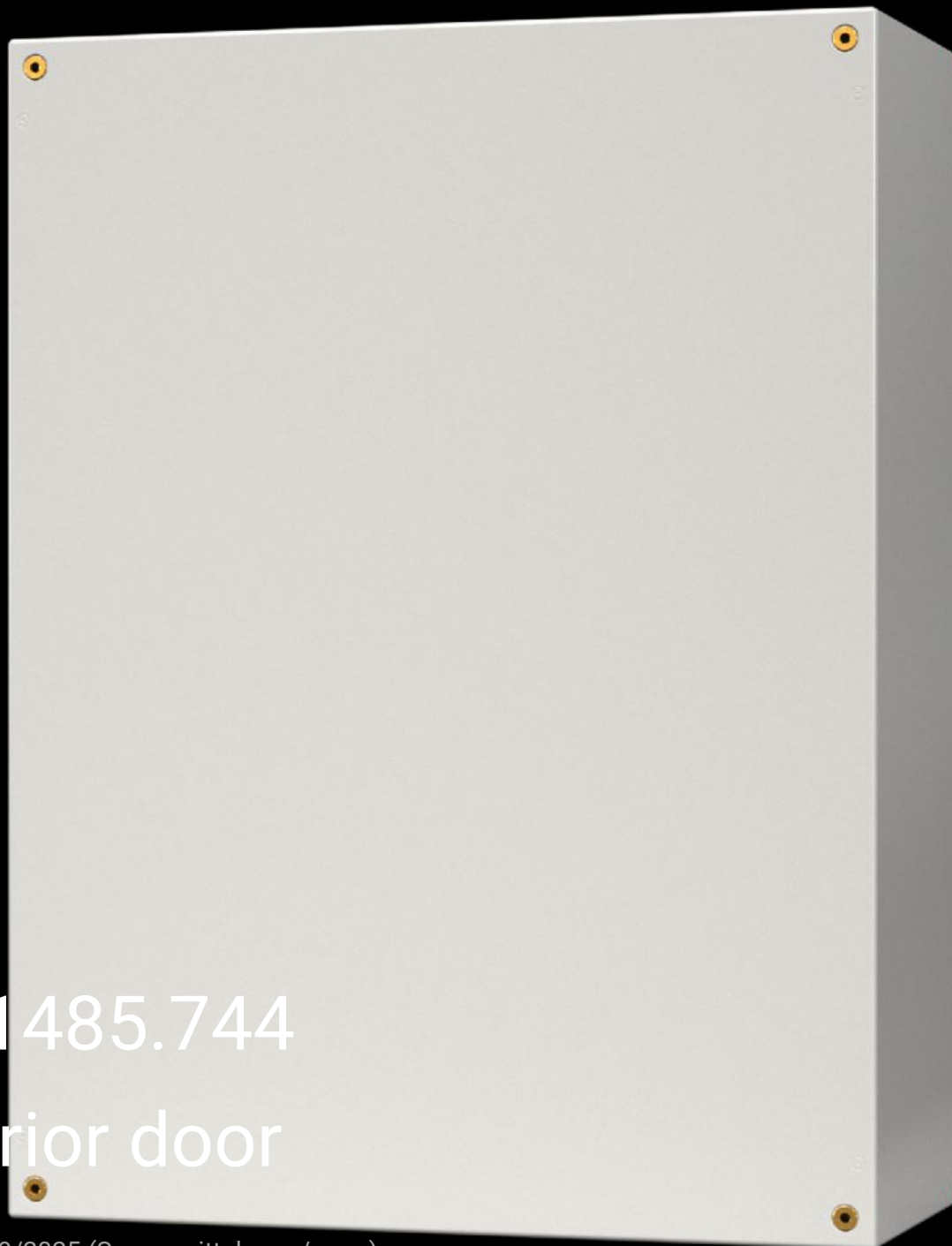
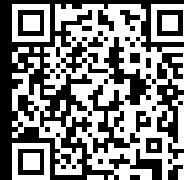


Rittal – The System.

Faster – better – everywhere.



SZ 1485.744
Interior door

State: 01/09/2025 (Source: rittal.com/gr-en)

ENCLOSURES

POWER DISTRIBUTION

CLIMATE CONTROL

IT INFRASTRUCTURE

SOFTWARE & SERVICES

FRIEDHELM LOH GROUP



SZ 1485.744 - Interior door for AX plastic enclosures

For reliable access protection. Separation of the operating and equipment levels.



Features

Model No.	SZ 1485.744
Material	Door and door frame: Sheet steel
Surface finish	Door: Powder-coated, textured paint Door frame: Zinc-plated
Colour	Door: RAL 7035
Supply includes	Door Cam lock with 3 mm double-bit insert Assembly screws
Installation options	In AX plastic, on mounting bosses in the side panels
Note	Standard double-bit lock insert may be exchanged for 27 mm lock inserts, type A
To fit enclosure type	AX plastic
Suitable for width	400 mm
Suitable for height	400 mm
Material thickness - door	1 mm
Door opening angle	105°
Packs of	1 pc(s).

Features

Net weight	1.94
Gross weight	2.04
Customs tariff number	94039910
EAN	4028177965874
ETIM 9	EC000747
ETIM 8	EC000747
ECLASS 8.0	27182204