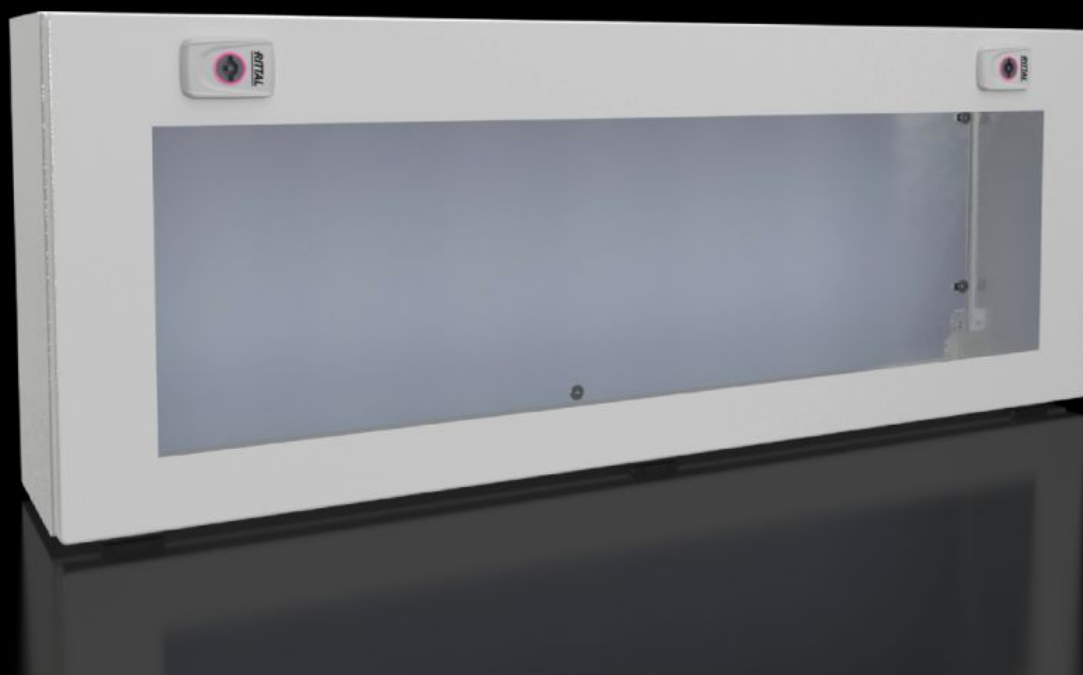


Rittal – The System.

Faster – better – everywhere.



KX 1613.100

Bus enclosures KX, sheet steel, with double-bit insert

State: 18/07/2025 (Source: rittal.com/gr-en)

ENCLOSURES

POWER DISTRIBUTION

CLIMATE CONTROL

IT INFRASTRUCTURE

SOFTWARE & SERVICES

FRIEDHELM LOH GROUP



KX 1613.100 - Bus enclosures KX, sheet steel, with double-bit insert

Wall-mounted enclosure made from sheet steel, with cover and viewing panel. Protection category IP 65/NEMA 12. For installing most brands of bus modules and sensors.



Features

| | |
|-----------------------------------|--|
| Model No. | KX 1613.100 |
| Design | with viewing window |
| Material | Enclosure: Sheet steel Cover: Sheet steel, all-round foamed-in PU seal Viewing window: Polycarbonate, 4 mm Mounting plate: Sheet steel, zinc-plated |
| Surface finish | Enclosure and cover: Dipcoat primed, powder-coated on the outside, textured paint |
| Colour | RAL 7035 |
| Supply includes | Enclosure with hinged cover Viewing window in cover Mounting plate Cam lock with 3 mm double-bit insert |
| Protection category NEMA | NEMA 1 NEMA 12 |
| Protection category to IEC 60 529 | IP 65 |

Features

| | |
|--------------------------------------|--|
| Type rating to UL 50E | Type 1 Type 12 |
| IK Code | IK08 |
| Dimensions | Width: 800 mm Height: 300 mm Depth: 155 mm |
| Material thickness - cover | 1.25 mm |
| Material thickness - enclosure | 1.25 mm |
| Material thickness of mounting plate | 2 mm |
| Basic material | Sheet steel |
| Packs of | 1 pc(s). |
| Net weight | 12 |
| Gross weight | 12.111 |
| PCF per pack (cradle-to-gate) | 40.9 kg CO2 eq (Cat B) |
| Note on PCF category | Category B: PCF value (cradle-to-gate) based on the product weight, approximately calculated and self-declared |
| Customs tariff number | 94032080 |
| EAN | 4028177970038 |
| ETIM 9 | EC000261 |
| ETIM 8 | EC000261 |
| ECLASS 8.0 | 27180101 |

Approvals

| | |
|-----------|------|
| Approvals | C-UL |
|-----------|------|

Tender text

Enclosure (bus enclosure)

Enclosure with cover:

Stable sheet steel design,
body folded from a single piece and welded,
with protection channel all-round cover opening,
rear panel with eyelets for wall mounting bracket,
lid hinged at bottom, with viewing window,
with all-round foamed-in PU seal,
with PE conductor connection in the enclosure
and via U-shaped bracket in the cover,
for quick and easy earthing,
with cam lock and double bid insert,
with mounting plate.

QR code:

QR code printed on body, cover, mounting plate and
type plate for clear identification and easy retrieval of relevant
product information and documentation,
and for clear traceability of the individual parts.

Accessories: lock inserts, type A,
top hat rail, wall mounting bracket,
modular cable entry.

Material:

Enclosure, cover: Sheet steel

Viewing window: Polycarbonate

Mounting plate: sheet steel

Enclosure and cover surface finish:

Triple surface treatment for optimum protection
against corrosion and resistance to mineral oils,
lubricants, machining emulsions and solvents:
Nanoceramic coating, electrophoretic dipcoat priming
Powder-coated on the outside in textured RAL 7035.

Mounting plate: zinc-plated

Protection category to IEC 60 529: IP 65

Protection category to UL 508A: Type 12

Dimensions (W x H x D): 800x300x155 mm