

**Rittal – The System.**

Faster – better – everywhere.



**AX 2260.630**

**AX wall-mounted enclosure, 3-part**

State: 17/06/2026 (Source: [rittal.com/gr-en](http://rittal.com/gr-en))

ENCLOSURES

POWER DISTRIBUTION

CLIMATE CONTROL

IT INFRASTRUCTURE

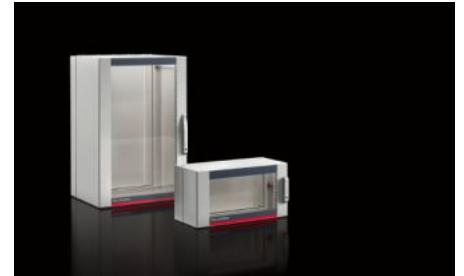
SOFTWARE & SERVICES

FRIEDHELM LOH GROUP



# AX 2260.630 - AX wall-mounted enclosure, 3-part

The delivery concept of the three-part AX wall-mounted enclosures reduces complexity and enhances flexibility. The AX/VX modular system makes these enclosures suitable for a range of applications. The three-part structure ensures easy access.



## Features

|                    |  |
|--------------------|--|
| Model No.          | AX 2260.630  |
| Design             | Wall-mounted enclosures IT   |
| Material           | Wall and hinged part: Sheet steel, 1.5 mm<br>Viewing window: Single-pane safety glass, 3 mm  |
| Surface finish     | Powder-coated  |
| Colour             | Wall and hinged part: RAL 7035<br>Glazed door: RAL 7035/7015 (slate grey)  |
| Supply includes    | Wall section: Gland plate, solid, top and bottom<br>Hinged part with 25 mm pitch pattern of holes in the front and rear frame, and two 482.6 mm (19") mounting angles, front, static installation<br>Designer glazed door<br>Centre part lock: 3 mm double-bit<br>Designer glazed door lock: Security lock 3524 E<br>Mini-comfort handle |
| Units              | 6 U  |
| Dimensions         | Width: 600 mm<br>Height: 345 mm<br>Depth: 373 mm   |
| Installation depth | 320 mm   |

# Features

|  |   |
|--|---|
| Clearances                             | Clearance width: 502 mm<br>Clearance height: 284 mm   |
| Depth hinged part                      | 216 mm  |
| Depth of wall section                  | 135 mm  |
| Number of locks                        | 1   |
| Load capacity of hinged part (static)  | 300 N   |
| Load capacity of wall section (static) | 100 N   |
| Basic material                         | Sheet steel   |
| Lock                                   | Lock version: Mini-comfort handle<br>Lock insert: Security lock insert no. 3524 E   |
| Protection category to IEC 60 529      | IP 54 in conjunction with solid gland plate top and bottom  |
| Packs of                               | 1 pc(s).  |
| Net weight                             | 21.6 kg   |
| Gross weight                           | 22.6 kg   |
| Note on PCF category                   | Category B: PCF value (cradle-to-gate) based on the product weight, approximately calculated and self-declared                          |
| Customs tariff number                  | 94032080  |
| ETIM 9                                 | EC002500  |
| ETIM 8                                 | EC002500  |
| ECLASS 8.0                             | 27180101  |
| Product description                    | AX wall-mounted enclosure, 3-part, WxHxD: 600x746x573 mm, 6 U, wall section: solid gland plate top and bottom, with mini-comfort handle |

# Approvals

|           |                    |
|-----------|--------------------|
| Approvals | UL + C-UL (listed) |
|-----------|--------------------|

# Approvals

---

Explanations

Declaration of conformity

## Tender text

AX wall-mounted enclosure 3-part, 6 U, depth 373 mm

Enclosure: 3-part wall-mounted enclosure consisting of:

Wall section with solid gland plate at the top and bottom, may optionally be exchanged for cable entry variants (accessories), holes for wall-mounting,

Hinged section with 2 pcs. 482,6 mm (19")

mounting angles fitted at the front with all-around 25 mm pitch pattern in the front and rear frame.

Designer glazed door with mini-comfort handle

for lock inserts, with security lock 3524 E,

may optionally be exchanged for mini-comfort handle for semi cylinder (accessory)

Material enclosure: sheet steel 1,5 mm,

Material glazed door: single-pane safety glass, 3 mm

Surface finish: powder-coated

Color wall and hinged part: RAL 7035

Color glazed door: RAL 7035/7015 (slate grey)

Protection category: IP 55 nach EN 60 529

Dimension (W x H x D): 600 x 345 x 373 mm, 6 U

Manufacturer: Rittal GmbH & Co. KG