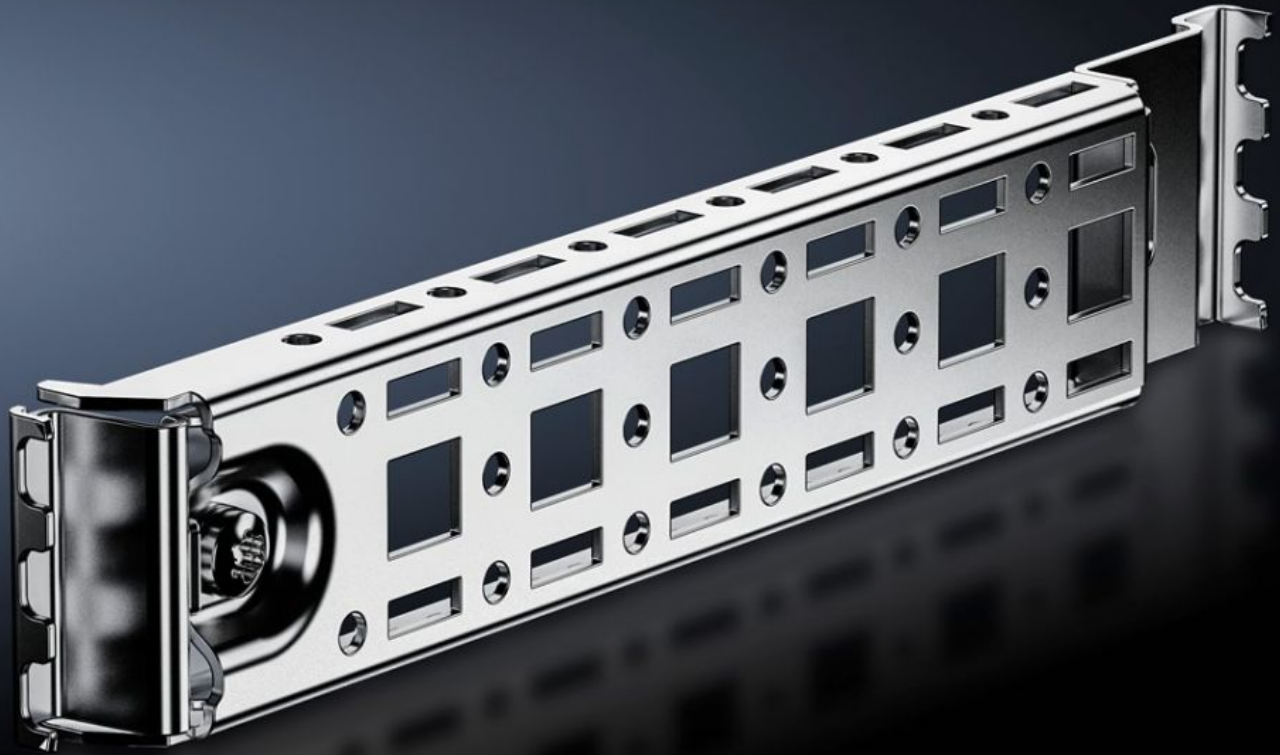


Rittal – The System.

Faster – better – everywhere.



AX 2393.300

Rail for interior installation AX

State: 07/05/2026 (Source: rittal.com/gr-en)

ENCLOSURES

POWER DISTRIBUTION

CLIMATE CONTROL

IT INFRASTRUCTURE

SOFTWARE & SERVICES

FRIEDHELM LOH GROUP



AX 2393.300 - Rail for interior installation AX

For mounting in the enclosure, no machining required. Suitable for mounting on the side, base and roof up to a load of 25 N using the locators integrated into the enclosure.

Features

| | |
|-----------------------|---|
| Model No. | AX 2393.300 |
| Product description | For mounting in the enclosure, no machining required. Suitable for mounting on the side, base and roof up to a load of 25 N using the locators integrated into the enclosure lights, door-operated switch, door stay, cable conduit holder enclosure. Variable with 2 rows of system punchings, creates additional mounting space e.g. for: Punched section with mounting flange 14 x 39 mm, enclosure lights, door-operated switch, door stay, cable conduit holder. |
| Benefits | Only one screw for attaching the rail inside the enclosure Including adaptor for door-operated switch Compatibility with VX25 accessories Enclosure protection category is retained (no machining required) Automatic potential equalisation May be retro-fitted even with the mounting plate in situ. Suitable for installation via gland plates |
| Material | Sheet steel |
| Surface finish | Zinc-plated |
| Assembly instruction | For installing LED system light, only in conjunction with mounting bracket for interior installation |
| To fit | Enclosure type: AX Depth: = 300 mm |
| Packs of | 4 pc(s). |
| Net weight | 0.78 kg |
| Gross weight | 0.792 kg |
| Customs tariff number | 73269098 |
| ECLASS 8.0 | 27189234 |
| Product description | AX Rail for interior installation, for D: 300 mm |