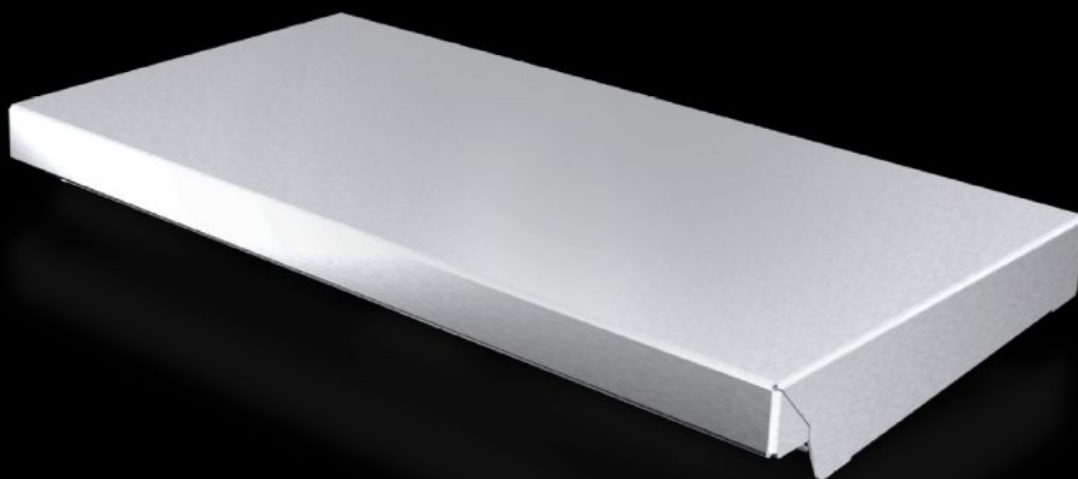


# Rittal – The System.

Faster – better – everywhere.



## AX 2472.010

### Protective roof

State: 08/08/2025 (Source: [rittal.com/gr-en](https://www.rittal.com/gr-en))

ENCLOSURES

POWER DISTRIBUTION

CLIMATE CONTROL

IT INFRASTRUCTURE

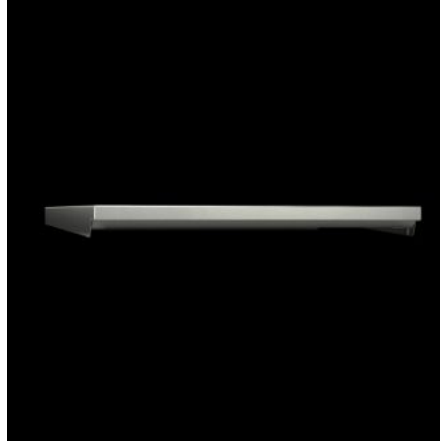
SOFTWARE & SERVICES

FRIEDHELM LOH GROUP



# AX 2472.010 - Protective roof for AX

The sloping protective roof reliably protects the enclosure from standing moisture and other soiling from above.



## Features

Model No.	AX 2472.010
Product description	The sloping protective roof reliably protects the enclosure from standing moisture and other soiling from above.
Material	Stainless steel 1.4301 (AISI 304)
Surface finish	Brushed, grain 240
Supply includes	Assembly parts
Installation options	May also be screw-fastened for dynamic loads
Dimensions	Height: 37 mm
Type rating to UL 50E	Type 1 Type 3R Type 4 Type 4X Type 12
To fit	Enclosure type: AX Width: = 380 mm Depth: = 210 mm
Packs of	1 pc(s).
Net weight	1.36

# Features

Gross weight	1.66
Customs tariff number	94039910
EAN	4028177938229
E-Number Sweden	E3465263
ETIM 9	EC000744
ETIM 8	EC000744
ECLASS 8.0	27182405

# Approvals

Approvals	UL + C-UL - FTTA
-----------	------------------