

Rittal – The System.

Faster – better – everywhere.



SK 3237.810 Blue e+ filter fan

State: 27/05/2026 (Source: rittal.com/gr-en)

ENCLOSURES

POWER DISTRIBUTION

CLIMATE CONTROL

IT INFRASTRUCTURE

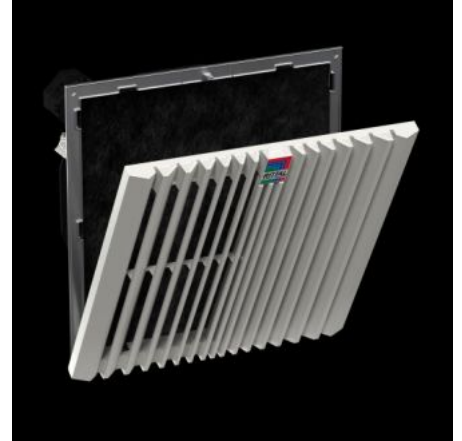
SOFTWARE & SERVICES

FRIEDHELM LOH GROUP



SK 3237.810 - Blue e+ filter fan EMC

Complete fan unit with EMC shielding for tool-free mounting on surfaces. Air throughput from 20 – 900 m³/h



Features

| | |
|---|---|
| Model No. | SK 3237.810 |
| Design | wall-mounted EMC |
| Product description | EMC fan-and-filter units offer a high shielding/attenuation effect and meet requirement category 2 to EN 61587-3. |
| Benefits | Easy filter changes, thanks to a new opening mechanism on the louvred grille Faster installation on the enclosure with optimised detent hooks Diagonal fan technology achieves more even and constant ventilation of the enclosure, thanks to improved pressure stability Tool-free assembly |
| Material | Plastic |
| Colour | RAL 7035 |
| Supply includes | Complete unit ready to install, including EMC filter mat |
| Fan | Axial, shaded pole motor |
| Air throughput, unimpeded airflow (with chopped-fibre filter) | At 50 Hz: 20 m ³ /h At 60 Hz: 25 m ³ /h |

Features

| | |
|---|--|
| Air throughput with matching outlet filter including chopped-fibre filter | At 50 Hz: 15 m ³ /h At 60 Hz: 18 m ³ /h |
| Rated operating voltage | 115 V, 1~, 50 Hz/60 Hz |
| Power consumption Pel | At 50 Hz: 12 W At 60 Hz: 10 W |
| Rated current max. | At 50 Hz: 0.14 A At 60 Hz: 0.13 A |
| Dimensions | Width: 116.5 mm Height: 116.5 mm Depth: 64.5 mm |
| Installation depth | 46 mm |
| Mounting cut-out | Cut-out width: 92 mm Cut-out height: 92 mm |
| IP protection category to IEC 60529 | IP 54 with chopped-fibre filter IP 56 with chopped-fibre filter and hose-proof hood |
| Protection category NEMA | Type 12 with chopped-fibre filter Type 3, 3R with chopped-fibre filter and hose-proof hood |
| Pre-fuse | Miniature circuit-breaker/fuse: 2 A |
| Note | To improve energy efficiency and extend the service life of the devices, we recommend the use of thermostats or temperature displays |
| Operating temperature range | -15 °C...55 °C |
| Storage temperature range | -30 °C...70 °C |
| Noise level | At 50 Hz: 42 dB(A) At 60 Hz: 47 dB(A) |
| Packs of | 1 pc(s). |
| Net weight | 0.4 kg |
| Gross weight | 0.4 kg |
| Customs tariff number | 84145915 |
| ETIM 9 | EC000320 |

Features

| | |
|---------------------|---|
| ETIM 8 | EC000320 |
| ECLASS 8.0 | 27180716 |
| Product description | SK Blue e+ fan-and-filter unit, EMC, 20/25 m ³ /h, 115 V, 1~, 50 Hz/60 Hz, WxHxD 116.5 x 116.5 x 64.5 mm, RAL 7035 |

Approvals

| | |
|--------------|--|
| Approvals | CSA 30 - KC Korea UL + C-UL - FTTA UR + C-UR (recognized) |
| Explanations | Declaration of conformity |
